



**Guide Price**

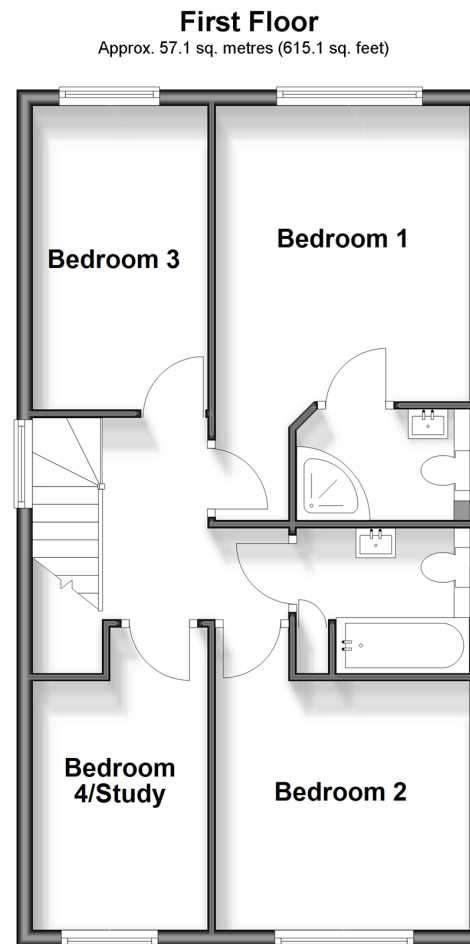
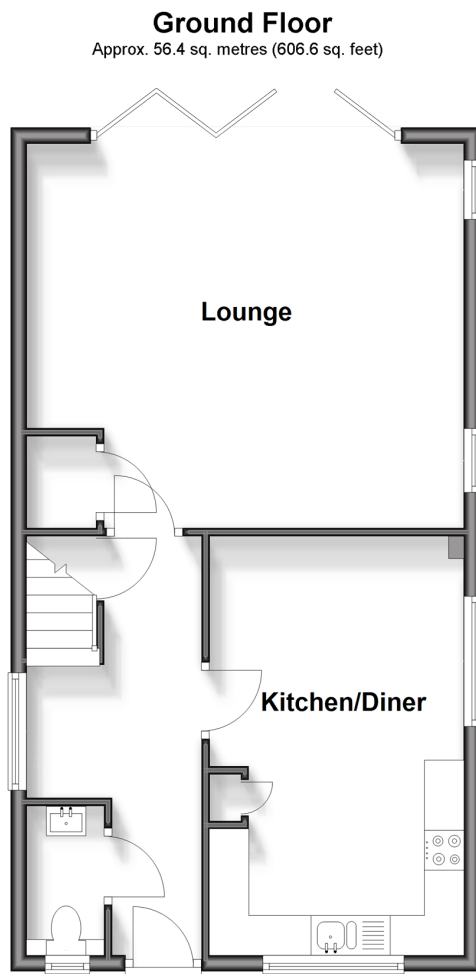
**£775,000**

**Freehold**

4x  2x  1x 

**Orchard View, Firs Lane,  
Hollingbourne,  
Hollingbourne,  
Maidstone, Kent, ME17**

*Wards*  
Helping you move forwards



## Accommodation

### GROUND FLOOR

Entrance Hall: 16'4 x 4'7 (4.98m x 1.40m)  
Kitchen/Diner: 17'5 x 10'8 (5.31m x 3.25m)  
Living Room: 17'2 x 16'0 (5.24m x 4.88m)  
Cloakroom: 5'10 x 2'11 (1.78m x 0.89m)

En-suite Shower Room: 7'2 x 4'8 (2.19m x 1.42m)

Bedroom 2: 10'4 x 9'8 (3.15m x 2.95m)

Bedroom 3: 14'7 x 7'2 (4.45m x 2.19m)

Study / Bedroom 4: 12'8 x 7'1 (3.86m x 2.16m)

Bathroom: 7'2 x 6'0 (2.19m x 1.83m)

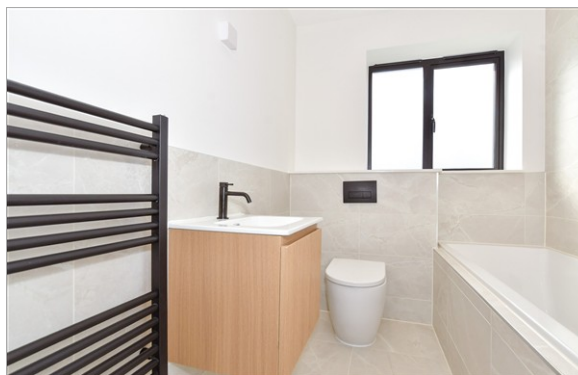
Carport  
Off Road Parking  
Front and Rear Gardens

### FIRST FLOOR

Landing  
Bedroom 1: 12'6 x 10'11 (3.81m x 3.33m)

### OUTSIDE





## Main features

- Designer high specification kitchen
- First floor study, ideal for working from home
- En-suite shower room to main bedroom
- Beautifully appointed family bathroom
- Air source heat pump and solar panels
- Economical underfloor heating throughout
- Spacious landscaped rear garden with patio and lawn



### Nearest Schools

Primary Schools: Hollingbourne Primary 1.9 miles, Madginford Park Junior School 2.0 miles, Leeds and Broomfield C of E Primary 2.0 miles

Secondary Schools: Invicta Grammar School 3.2 miles,



### Transport Information

Train Stations: Bearsted 1.4 miles, Hollingbourne 1.7 miles, Maidstone Barracks 3.7 miles



### Address

Orchard View, Firs Lane, Hollingbourne, Hollingbourne, Maidstone, Kent, ME17



### Directions

For directions to this property please contact us.





Call Bearsted Branch 01622 730955 ■ [wardsofkent.co.uk](http://wardsofkent.co.uk)



■ Legal advice should be taken to verify fixtures/fittings, planning, alterations and/or lease details ■ Appliances & services are untested, dimensions are approximate and floor plans are not to scale



12329004/20250924/DF/DF