



PropertyLine



12 Monument Street

Eastfield, Peterborough, PE1 4AQ

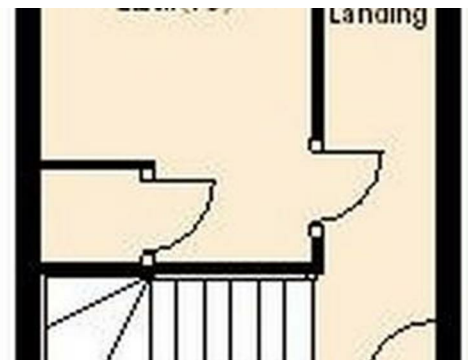
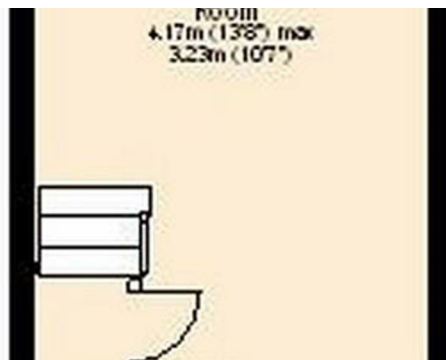
£900 PCM



Refurbished two bedroom terraced house situated within walking distance of the city centre.

Accommodation comprising of a spacious reception and kitchen. To the first floor there are two double bedrooms and a family bathroom.

Benefits include neutral decor, brand new kitchen, newly fitted carpets on the stairs and first floor, new flooring to ground floor, rewired, full double glazing & central heating.



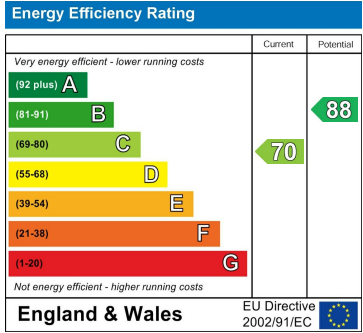
Area Map



Floor Plans



Energy Efficiency Graph



These particulars, whilst believed to be accurate are set out as a general outline only for guidance and do not constitute any part of an offer or contract. Intending purchasers should not rely on them as statements of representation of fact, but must satisfy themselves by inspection or otherwise as to their accuracy. No person in this firms employment has the authority to make or give any representation or warranty in respect of the property.