



**POOLE  
TOWNSEND**

33 King Street,  
£110,000

🛏️ 2 🚿 1 🚗 1



Conveniently situated within easy walking distance of the town centre, local shops, convenience store, and nearby bus services, this well-presented two bedroom mid-terraced home offers comfortable accommodation ideally suited to first-time buyers, couples, or investors. The property features a dining room leading into a cosy central lounge with solid fuel stove, fitted kitchen with a range of units and appliance space, modern ground floor shower room, and two well-proportioned double bedrooms to the first floor. Further benefits include double glazing, gas-fired central heating, enclosed rear yard, and roadside parking available immediately outside.

### Located

What3Words///blotting.limiting.recliner

### Description

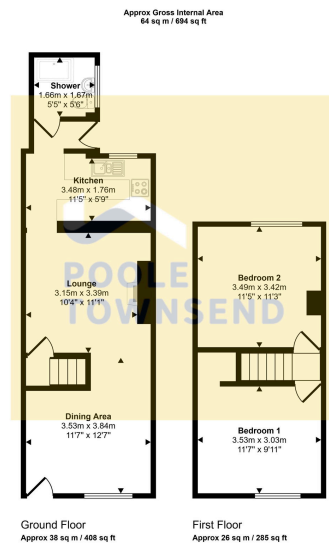
Conveniently located within easy walking distance of the town centre, local shops, convenience store, and nearby bus services, this attractive mid-terraced home offers comfortable and well-presented accommodation ideally suited to first-time buyers, couples, or investment purchasers. The property is situated along an adopted road with roadside parking available directly outside.

The ground floor accommodation briefly comprises a dining room leading through into a cosy central lounge featuring a solid fuel stove set within the chimney breast and access to the staircase. An opening leads into the fitted kitchen which includes a range of wall and base units, work surfaces with inset sink, gas hob with cooker hood, oven with grill, plumbing for a washing machine, and space for additional appliances. Beyond the kitchen is a rear hallway providing access to the enclosed rear yard and the modern shower room.

The contemporary shower room is fitted with a large shower enclosure with mixer shower, WC, hand basin with storage beneath, tiled splashbacks, opaque glazed window, and chrome ladder-style radiator.

To the first floor are two well-proportioned double bedrooms, with the front bedroom benefiting from useful over-stair storage.

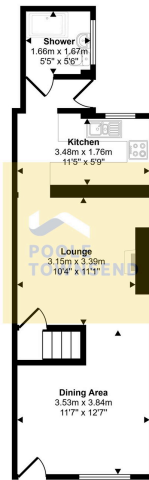




Ground Floor  
Approx 38 sq m / 408 sq ft

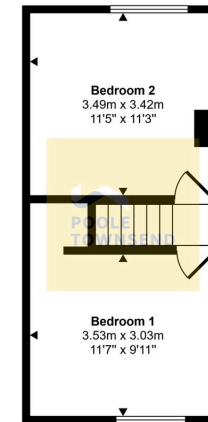
First Floor  
Approx 26 sq m / 285 sq ft

This floorplan is only for illustrative purposes and is not to scale. Measurements of rooms, doors, windows, and any items are approximate and no responsibility is taken for any error, omission or mis-statement. Icons of items such as bathroom suites are representations only and may not look like the real items. Made with Made Snappy 360.



Ground Floor  
Approx 38 sq m / 408 sq ft

This floorplan is only for illustrative purposes and is not to scale. Measurements of rooms, doors, windows, and any items are approximate and no responsibility is taken for any error, omission or mis-statement. Icons of items such as bathroom suites are representations only and may not look like the real items. Made with Made Snappy 360.



First Floor  
Approx 26 sq m / 285 sq ft

This floorplan is only for illustrative purposes and is not to scale. Measurements of rooms, doors, windows, and any items are approximate and no responsibility is taken for any error, omission or mis-statement. Icons of items such as bathroom suites are representations only and may not look like the real items. Made with Made Snappy 360.

- 2 Bed Terraced House
- Close To Local Amenities
- Roadside Parking Immediately Outside
- Ideal For First Time Buyers Or Investors
- A Cosy Central Lounge
- Featuring A Dining Table
- A Fitted Kitchen
- A Modern Ground Floor Shower Room
- Double Glazing
- Enclosed Rear Yard

Visit us at  
[www.pooletownsend.co.uk](http://www.pooletownsend.co.uk)  
[enquiries@pooletownsend.co.uk](mailto:enquiries@pooletownsend.co.uk)

We are open  
 Monday – Friday 9.00 – 5.00  
 Saturday 9.00 – 1.00

Barrow 01229 811811  
 Ulverston 01229 588111  
 Grange 015395 33316  
 Kendal 01539 734455  
 Milnthorpe 015395 62044