



56 William Road

Ashford, TN23 7UU

Price £395,000

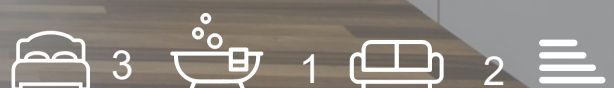
A very well appointed semi detached family home in a much sought after location, just a few minutes walk from Victoria Park, Ashford town centre and mainline station.

This charming extended property comprises an entrance hall, sitting room, dining room, kitchen/breakfast room, utility, cloakroom, three bedrooms and large family bathroom. The generous rear garden enjoys a sunny aspect and backs on to allotments with the property also benefiting from gas central heating, double glazing and driveway for two cars.

- EXTENDED SEMI-DETACHED HOME
- THREE BEDROOMS
- DRIVEWAY FOR TWO CARS
- 19FT KITCHEN/BREAKFAST ROOM
- UTILITY & GF CLOARKOOM
- GENEROUS REAR GARDEN WITH WORKSHOP
- BACKING ON TO ALLOTMENTS
- SHORT WALK FROM TOWN CENTRE & MAINLINE STATION
- GAS CENTRAL HEATING & DOUBLE GLAZING

Viewing

Please contact our Ashford Office on 01233 646411 if you wish to arrange a viewing appointment for this property or require further information.



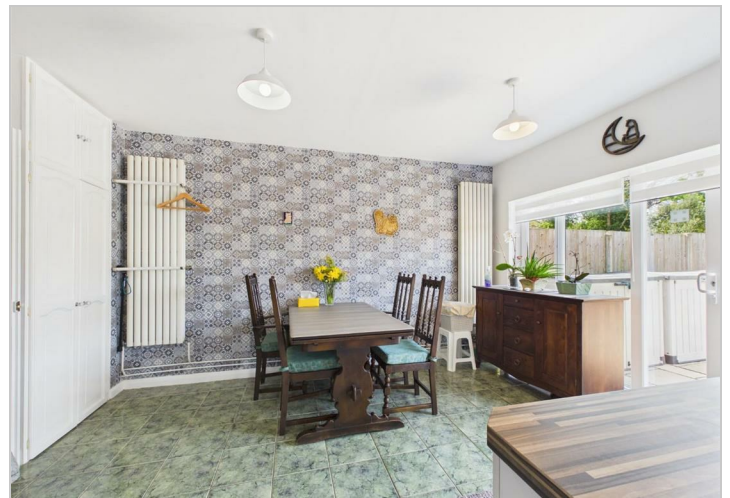
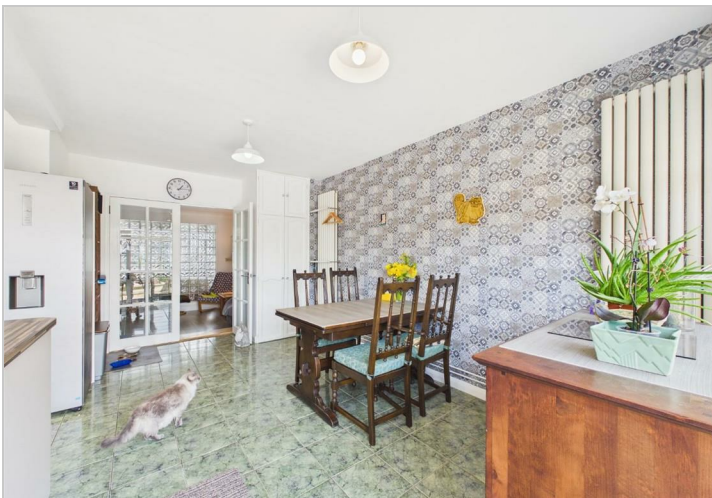
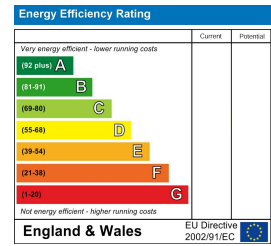
Floor Plan



Area Map



Energy Efficiency Graph



These particulars, whilst believed to be accurate are set out as a general outline only for guidance and do not constitute any part of an offer or contract. Intending purchasers should not rely on them as statements of representation of fact, but must satisfy themselves by inspection or otherwise as to their accuracy. No person in this firm's employment has the authority to make or give any representation or warranty in respect of the property.