



Dairyman Close, NW2

£280,000

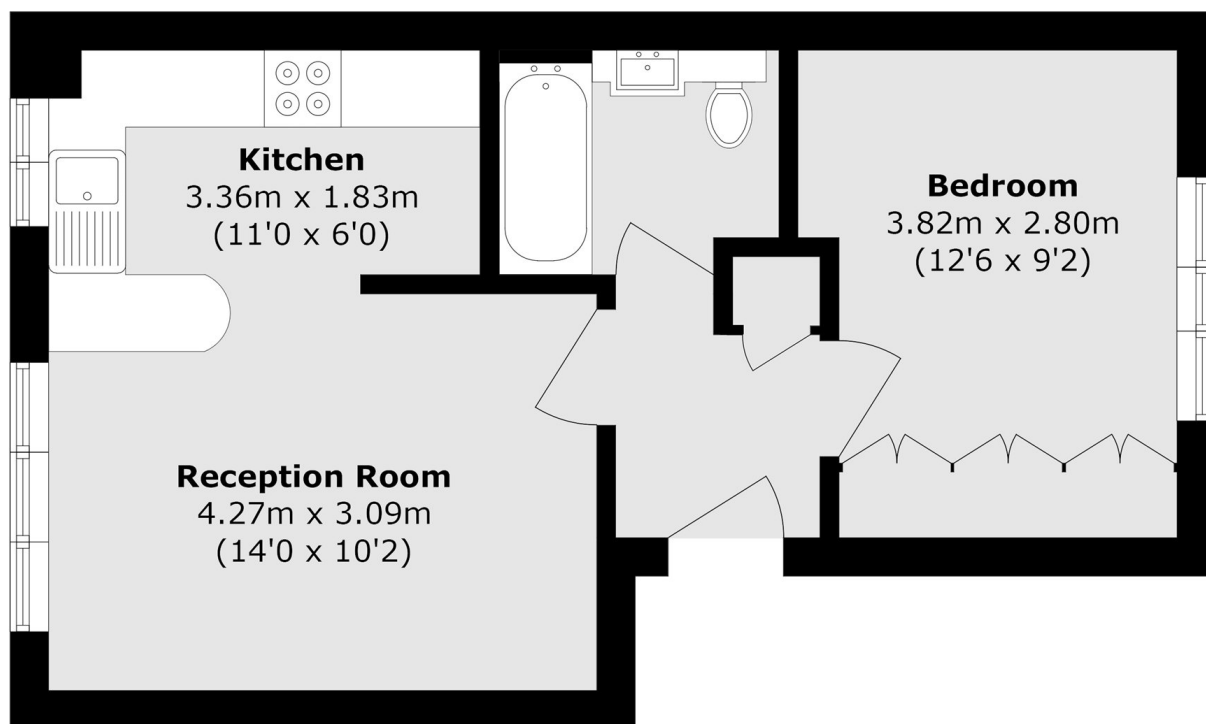
A stunning one bedroom, first floor apartment in a residential gated development. Ideal for both first time buyers and investors due to its modern refurbished features. The property consists of an open plan living space, with lots of natural light throughout, and benefits of no onward chain.

Dairyman Close is situated within easy reach of Cricklewood station (Thameslink) and Cricklewood Broadway, offering many transport links and amenities.

Features

- Gated Development
- First Floor Flat
- One Double Bedroom
- Ready To Move Condition
- Gated Parking
- Chain Free

Dairyman Close,
London, NW2



Total area (approx.): 38.4 sq. m (413.3 sq. ft)