

RESIDENTIAL/COMMERCIAL DEVELOPMENT FOREBRAE, BY METHVEN, PH1 3RF

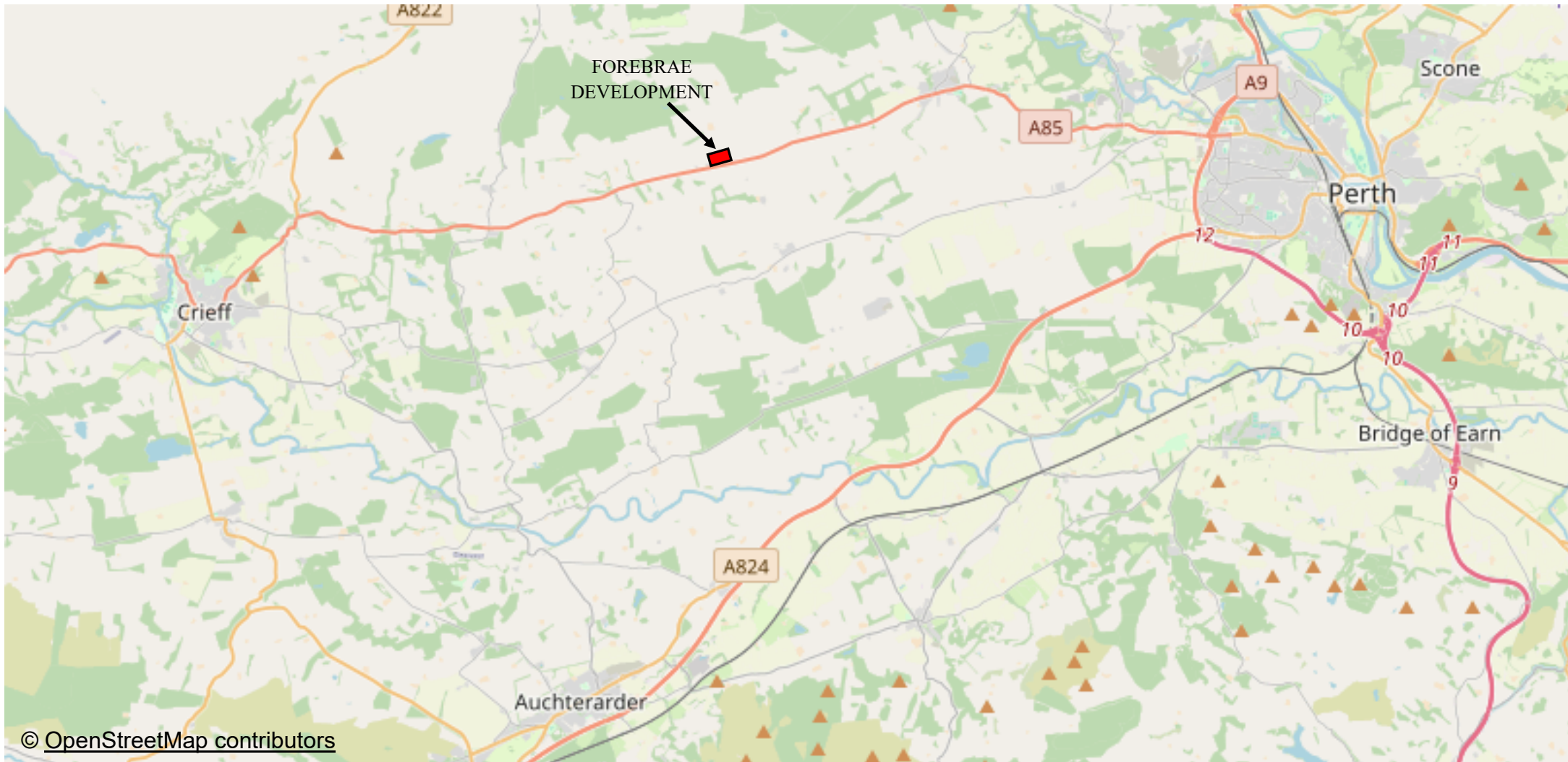


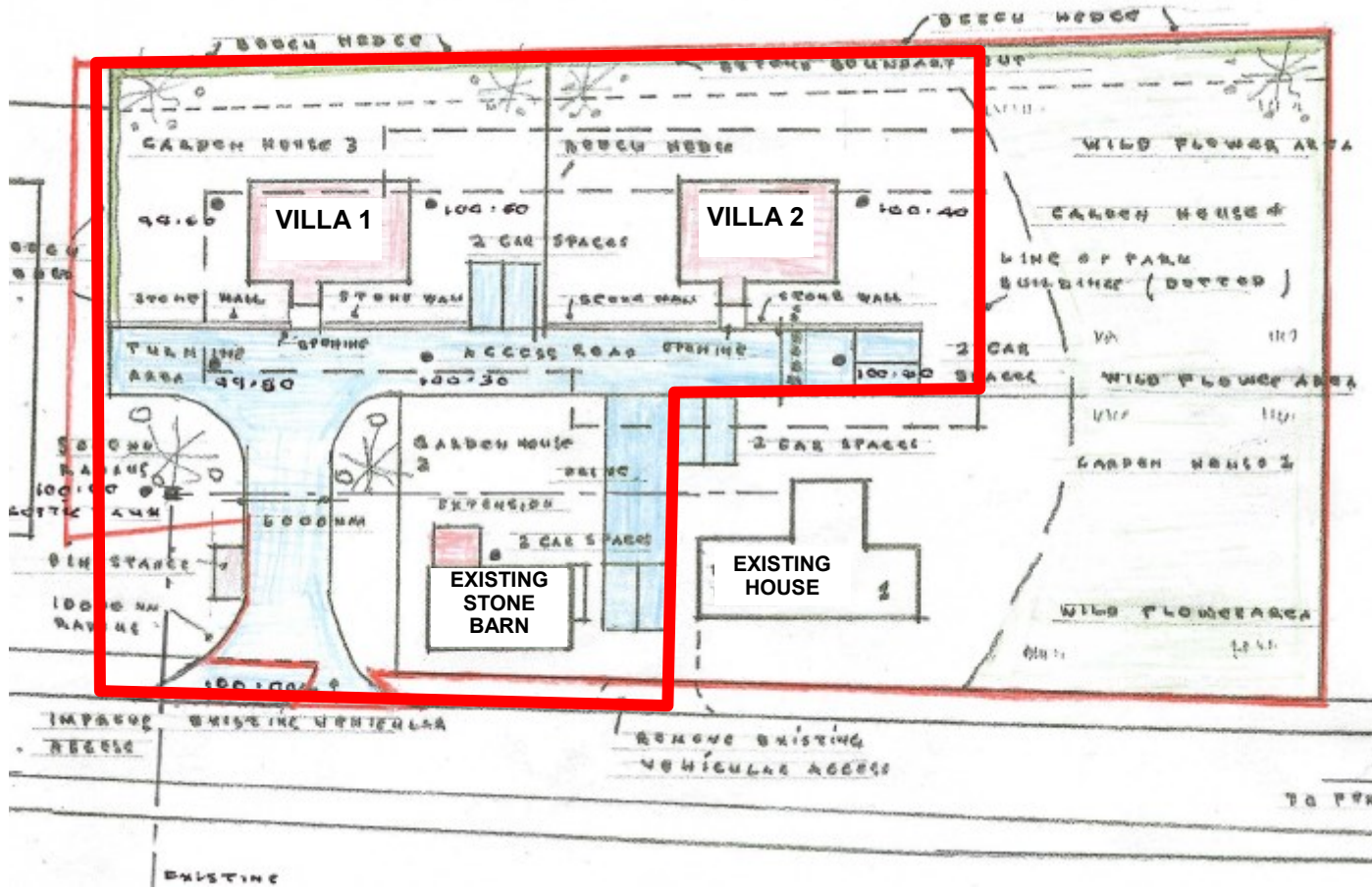
RESIDENTIAL DEVELOPMENT, FOREBRAE, BY METHVEN, PH1 3RF

Enjoying a rural yet accessible location this generously sized development site has recently been granted detailed planning permission for three residential properties. The site comprises an attractive stone barn, with two adjacent plots, a large agricultural shed adjacent and another substantial shed (c.2000m²) sitting to the west of the residential site. A further property to the east is owned by the seller and currently rented. The site benefits from on-site services and private access. The proposed designs are for two 1.5 storey 3 bedroom villas set to the rear of the site, and a 2 bed stone barn conversion. Each site has private gardens and parking. A very rare opportunity for residential and/or a rural commercial development.

The village of Methven has local amenities & is situated 3 miles east, with the City of Perth only a further 5 miles, & Strathearn's principal town of Crieff 8 miles west.

Planning Link: <https://planningapps.pkc.gov.uk/online-applications/applicationDetails.do?activeTab=documents&keyVal=STZISKMKHD300>







These particulars are believed to be correct, but their accuracy is not guaranteed and they do not form part of any contract. All measurements are approximate only.



Aberfeldy

6 The Square, PH15 2DD
Tel: 01887 822722

Crieff

14 Comrie Street, PH7 4AZ
Tel: 01764 670325

Crieff

25 West High Street, PH7 4AU
Tel: 01764 653771

Comrie

1 Drummond Street, PH6 2DW
Tel: 01764 670325