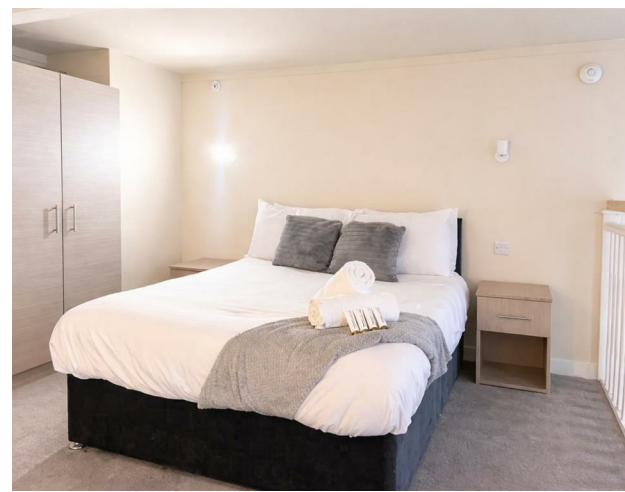


APT 13 - Athenaeum Residence, 147 - 157 The Headrow,
Leeds, LS1 5EW
£1,300 Per month

V&L
PROPERTIES



APT 13 - Athenaeum Residence, 147 - 157 The Headrow, Leeds, LS1 5EW

£1,300 Per month

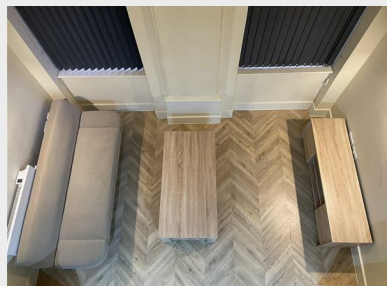
Council Tax Band:

We have 2 flats available
1) start date of 1st of May
2) Start date of 1st of June

Nestled in the heart of Leeds, this charming one-bedroom apartment at 147A The Headrow offers a delightful urban living experience. Situated on the second floor at the rear of the building, this property provides a peaceful retreat while still being conveniently close to the vibrant city centre.

The apartment features a well-appointed bedroom, perfect for relaxation after a busy day. The bathroom is designed with modern fixtures, ensuring comfort and convenience. Although the property spans a compact





22 Regent Street
Leeds
LS2 7QA
01133 225737
info@vgl-properties.co.uk
vgl-properties.co.uk

Energy Efficiency Rating		
	Current	Potential
<i>Very energy efficient - lower running costs</i>		
(92 plus) A		
(81-91) B		
(69-80) C		
(55-68) D		
(39-54) E		
(21-38) F		
(1-20) G		
<i>Not energy efficient - higher running costs</i>		
England & Wales		EU Directive 2002/91/EC 