



Conway Mews, W1T

£650,000

A one bedroom apartment with a bright westerly facing aspect and private balcony. Located in a quiet, secluded mews tucked behind Fitzroy Square. Benefits from lift access and a long lease. The service charge includes heating and hot water.

Located a short distance from Regents Park and the amenities of the West End. Local transport links are Great Portland Street, Warren Street and Tottenham Court Road for the Elizabeth Line. Mainline Stations at Marylebone, Euston and Kings Cross.

Features

- One Bedroom
- Passenger Lift
- Mews Location
- Lease To 2164
- Open Reception - Kitchen
- West Facing Balcony



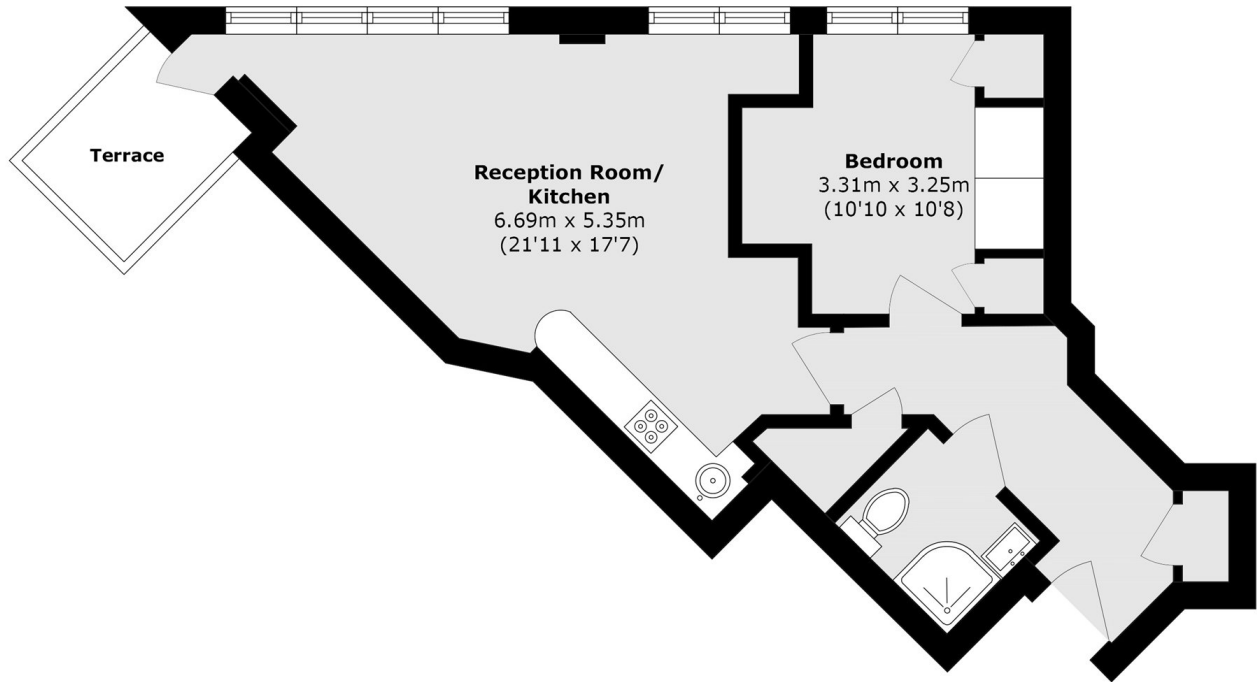
Conway Mews, W1T

The living space is open plan and has windows to one side overlooking the local roof tops. There is an integrated kitchen and the adequate space to dine. An occasional double bed is located in one wall and can easily be opened to provide sleeping area for guests.

The room opens to a westerly facing balcony with space for table and chairs. The bedroom has floor to ceiling built in wardrobes to one wall. The entrance hallway has a cupboard and a separate utility cupboard with a washer - dryer and storage space above.



Conway Mews, London, W1T



Sixth Floor

Total area (approx.): 40.9 sq. m (440.2 sq. ft)
Terrace area (approx.): 3.1 sq. m (33.3 sq. ft)