



Besley Street, SW16

£675,000

A terraced, four bedroom, family home located on a quiet residential street. This property has a charming front reception as well as an open kitchen/diner with double doors onto the private garden on the ground floor as well as a modern family bathroom.

Upstairs on the first floor there are two double bedrooms as well as a third smaller bedroom which is currently being used as a study. The top floor is a good sized main bedroom with eaves storage and en-suite shower room.

Besley Street is a quiet residential road perfectly positioned for Streatham Common mainline station, providing frequent links to Victoria and London Bridge.

Features

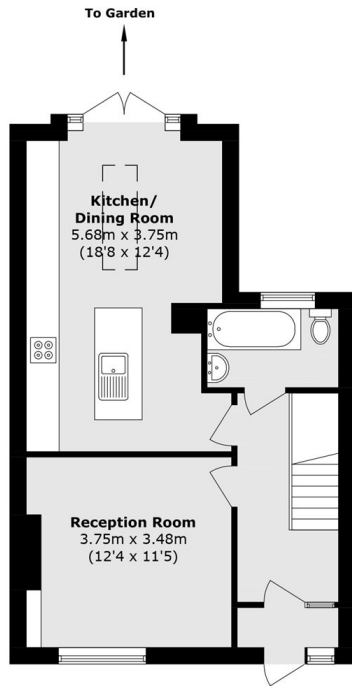
- Four Bedrooms
- Freehold House
- Private Garden
- Kitchen Diner
- Close to Station
- Quiet Street



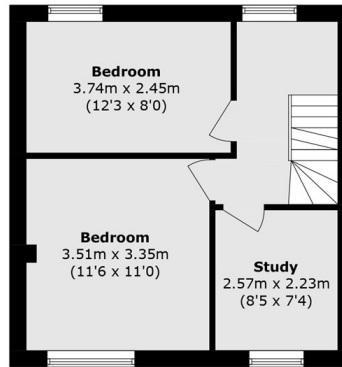
Besley Street, SW16



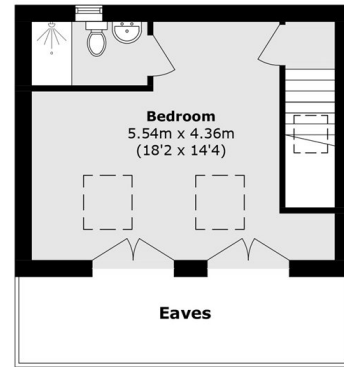
Besley Street, London, SW16



Ground Floor



First Floor



Second Floor

Total Area (approx.): 104.9 sq. m (1129.1 sq. ft)
(Excluding Eaves)