

# Croft Gardens

Ruislip • Middlesex • HA4 8EY

Guide Price: £900,000



coopers  
est 1986

# Croft Gardens

Ruislip • Middlesex • HA4 8EY

Set on one of Ruislip's most premium and sought after roads, this substantial family home on Croft Gardens presents a rare opportunity to acquire a property brimming with character and potential. The ground floor offers a welcoming entrance hall leading to a generous living room, a separate dining room ideal for entertaining, a fitted kitchen, downstairs WC and integral garage. Original features combine with well proportioned spaces, creating an excellent canvas for buyers looking to modernise and tailor a home to their own style.

Upstairs, the first floor provides five bedrooms arranged around a central landing, along with a family bathroom and separate WC, making it well suited to growing families or those needing flexible accommodation. Externally, the property benefits from a large rear garden perfect for outdoor living and entertaining, as well as off street parking to the front. Offered to the market chain free, this is a fantastic opportunity to secure a home in a prime Ruislip location with huge scope to add value and create something truly special.

Chain free

Five bedrooms

Living room

Dining room

Kitchen

Family bathroom

Large rear garden

Double garage

Off street parking

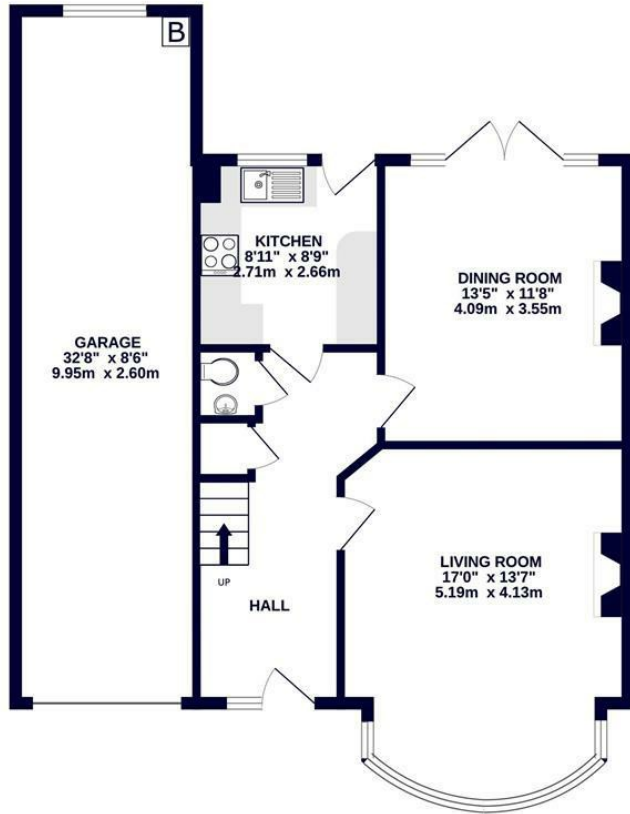
Sought after location

These particulars are intended as a guide and must not be relied upon as statements of fact. Your attention is drawn to the Important Notice on the last page.

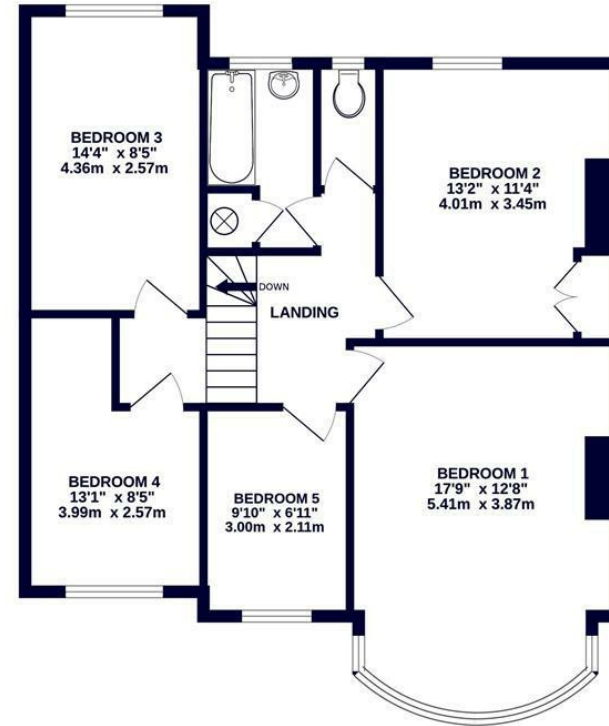




**GROUND FLOOR**  
832 sq.ft. (77.3 sq.m.) approx.



**1ST FLOOR**  
776 sq.ft. (72.1 sq.m.) approx.



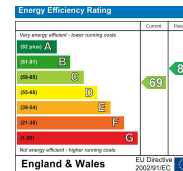
TOTAL FLOOR AREA : 1609 sq.ft. (149.4 sq.m.) approx.

Whilst every attempt has been made to ensure the accuracy of the floorplan contained here, measurements of doors, windows, rooms and any other items are approximate and no responsibility is taken for any error, omission or mis-statement. This plan is for illustrative purposes only and should be used as such by any prospective purchaser. The services, systems and appliances shown have not been tested and no guarantee as to their operability or efficiency can be given.  
Made with Metropix ©2026



**126-128 High Street, Ruislip,  
Middlesex, HA4 8LL**  
ruislipsales@coopersresidential.co.uk

**CoopersResidential.co.uk**



Important Notice: These particulars, whilst believed to be accurate are set out as a general outline only for guidance and do not constitute any part of an offer or contract. Intending purchasers should not rely on them as statements or representation of fact, but must satisfy themselves by inspection or otherwise has the authority to make or give any representation or warranty in respect of the property.