



Guide Price
£80,000

Leasehold

1x  1x  1x 

**Homepeak House,
Bartholomew Stree,
Hythe, Kent, CT21**

OVER 60?

Secure this property
for up to **59% less!**

Wards
Helping you move forwards



Main features

- No onward chain
- Ground floor retirement apartment with direct access to communal gardens
- Bright and airy as it is on the sunny side of the building
- Guest suite available at a small cost
- Communal lounge with kitchen for social events

Accommodation

GROUND FLOOR

Entrance Hall

Lounge/Diner: 15'6 x 10'7 (4.73m x 3.23m)

Kitchen: 7'3 x 5'5 (2.21m x 1.65m)

Bedroom : 12'2 x 8'9 (3.71m x 2.67m)

Bathroom: 6'9 x 5'5 (2.06m x 1.65m)

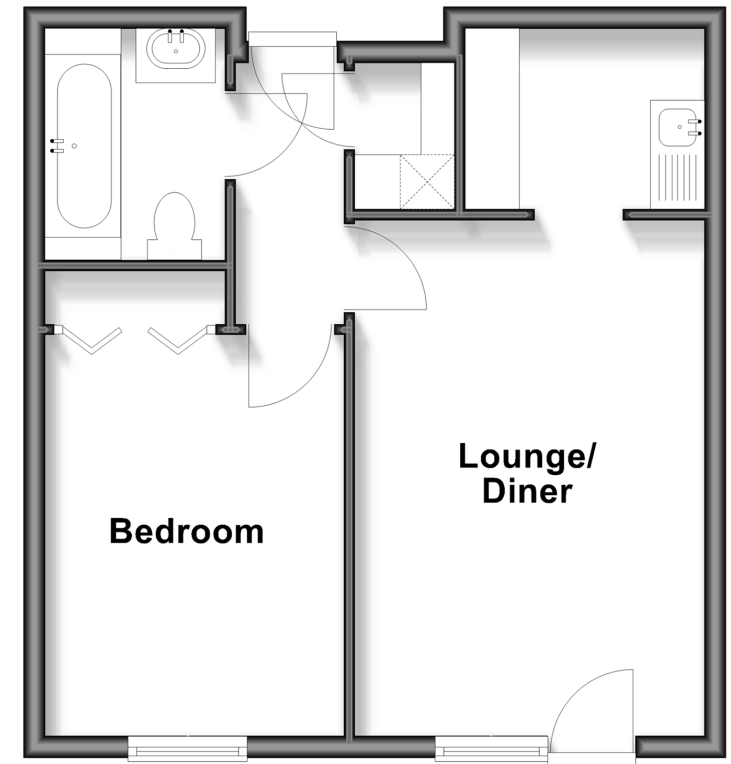
OUTSIDE

Communal Car Park

Communal Gardens

Ground Floor

Approx. 38.9 sq. metres (418.5 sq. feet)



Call Hythe - 01303 267473 ■ wardsofkent.co.uk

- Legal advice should be taken to verify fixtures/fittings, planning, alterations and/or lease details
- Appliances & services are untested, dimensions are approximate and floor plans are not to scale
- Through a Homewise Home For Life Plan people aged 60+ can secure this property for up to 59% less, by purchasing a Lifetime Lease



12825232/20260101/MIB/MIB