



**Stones Road, Epsom, Surrey**

KT17 1DF



# 17 Stones Road

Epsom, Surrey, KT17 1DF

NO CHAIN – DETACHED 2 BED BUNGALOW – Offering exceptional value, is this 2 bed detached bungalow, perfectly positioned in a peaceful cul-de-sac within half a mile from Epsom town & High Street. This property offers a fantastic opportunity for anyone looking to put their own stamp on a home, with plenty of scope for modernisation throughout – VIEW NOW !!

Council Tax band: D

Tenure: Freehold

EPC Energy Efficiency Rating: D

- 2 bed detached bungalow
- Cul-de-sac location
- Within half a mile of Epsom High Street
- No onward chain
- Private rear garden
- Off road parking
- Scope for modernisation





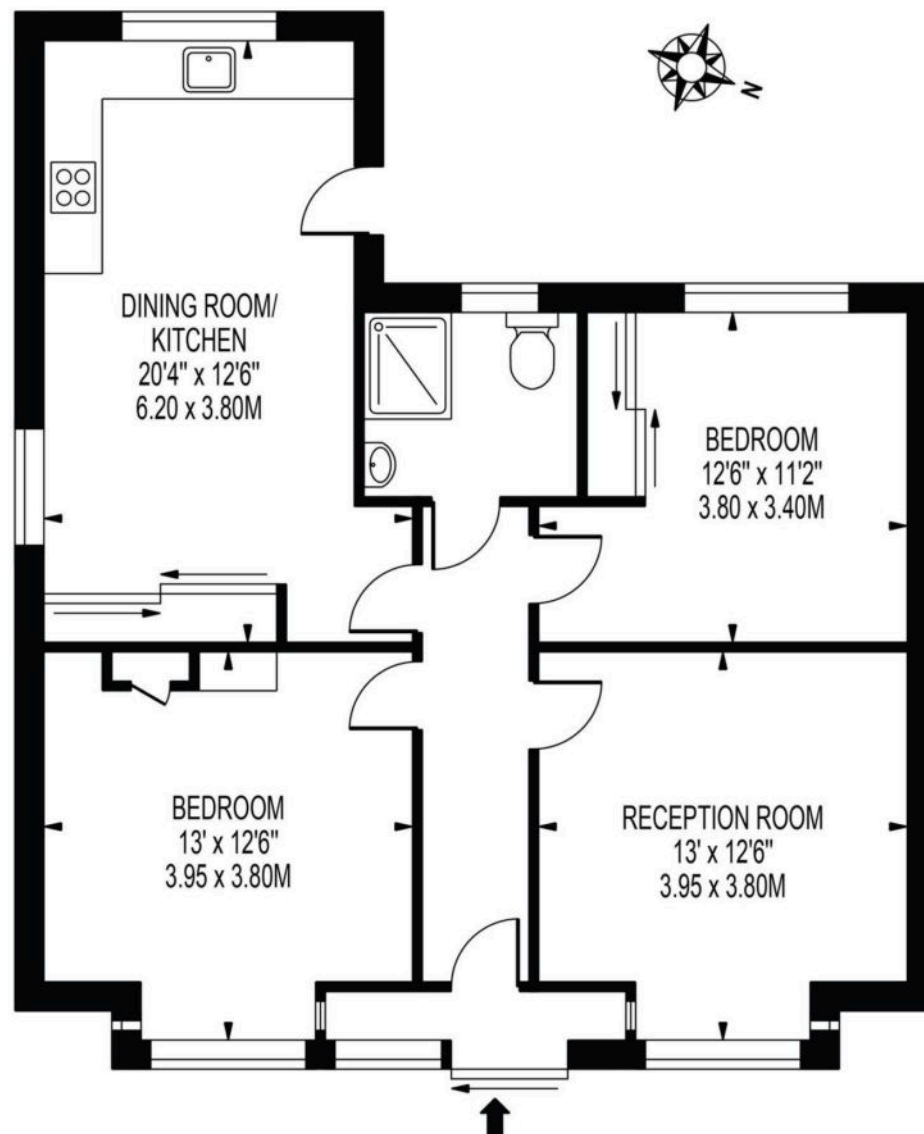






# STONES ROAD

APPROXIMATE GROSS INTERNAL FLOOR AREA: 802 SQ FT - 74.51 SQ M



GROUND FLOOR

FOR ILLUSTRATION PURPOSES ONLY

THIS FLOOR PLAN SHOULD BE USED AS A GENERAL OUTLINE FOR GUIDANCE ONLY AND DOES NOT CONSTITUTE IN WHOLE OR IN PART AN OFFER OR CONTRACT.  
ANY INTENDING PURCHASER OR LESSEE SHOULD SATISFY THEMSELVES BY INSPECTION, SEARCHES, ENQUIRIES AND FULL SURVEY AS TO THE CORRECTNESS OF EACH STATEMENT.  
ANY AREAS, MEASUREMENTS OR DISTANCES QUOTED ARE APPROXIMATE AND SHOULD NOT BE USED TO VALUE A PROPERTY OR BE THE BASIS OF ANY SALE OR LET.





## Greenfield Estate Agents – Ewell Village

Greenfield Estate Agents 55 High Street, Epsom – KT17 1RX

02083930077 • [property@greenfieldewell.co.uk](mailto:property@greenfieldewell.co.uk) • [www.greenfieldewell.co.uk/](http://www.greenfieldewell.co.uk/)

