

# KEYSTONE

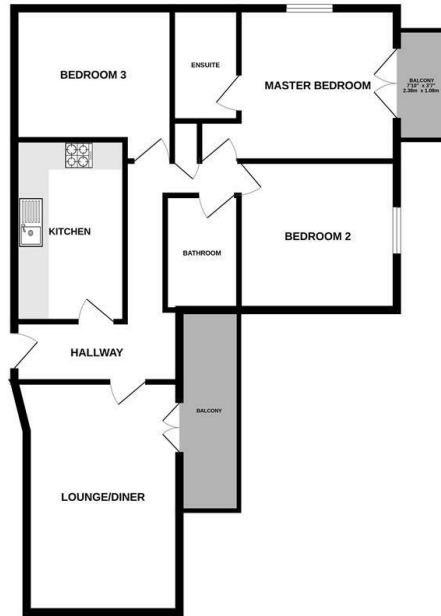


Key Street, Ipswich, IP4 1FU

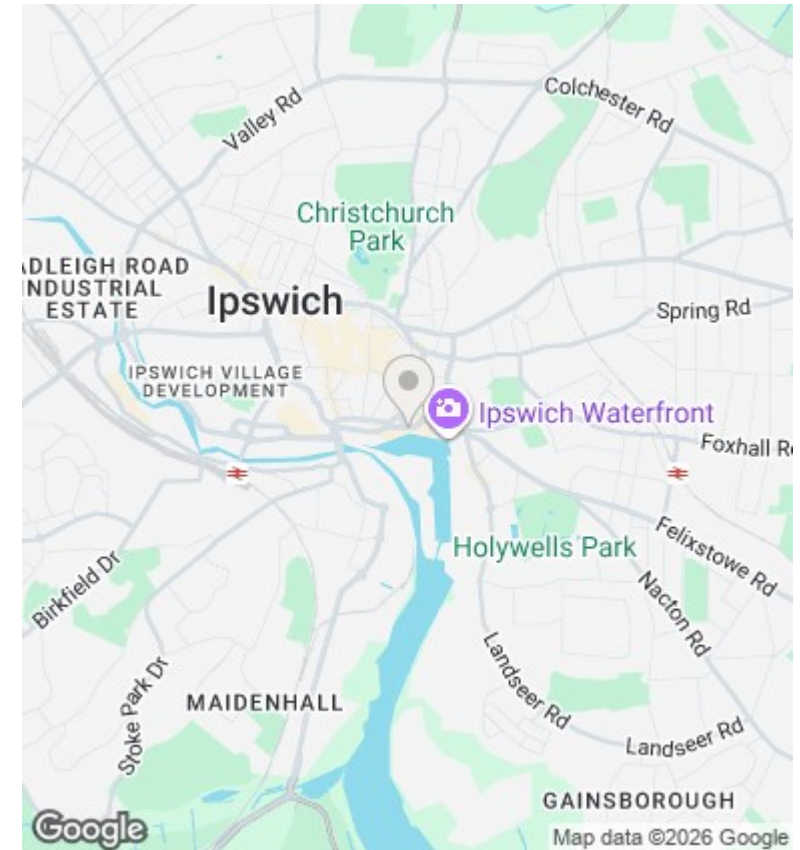
£1,695 Per Month

- Part Furnished Three (Double) Bedroom Apartment
- Separate Kitchen (Inc built in washing machine, fridge freezer, dishwasher, oven & hob)
- Off Road Parking - Secure Gated
- AVAILABLE NOW
- Situated in The Winerack (Q2), 2nd floor
- Large living room
- Double Glazed
- Two Balconies overlooking Ipswich Marina
- En-Suite & Separate Bathroom
- Electric Heating

GROUND FLOOR



Whilst every attempt has been made to ensure the accuracy of the floorplan contained here, measurements of doors, windows, rooms and any other items are approximate and no responsibility is taken for any error, omission or misstatement. This plan is for illustrative purposes only and should be used as such to any prospective purchaser. The services, systems and appliances shown have not been tested and no guarantee as to their operability or efficiency can be given.  
Made with iMagine 12/2025



## Directions

## Viewings

Viewings by arrangement only. Call 01473 221 399 to make an appointment.

## EPC Rating:

C

Energy Efficiency Rating		Current	Potential
<i>Very energy efficient - lower running costs</i>			
(92 plus) <b>A</b>			
(81-91) <b>B</b>			
(69-80) <b>C</b>		79	79
(55-68) <b>D</b>			
(39-54) <b>E</b>			
(21-38) <b>F</b>			
(1-20) <b>G</b>			
<i>Not energy efficient - higher running costs</i>			
<b>England &amp; Wales</b>		EU Directive 2002/91/EC	