

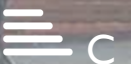
# CHARMILL

RESIDENTIAL



Fitzjohn's Avenue, Hampstead NW3

£1,520



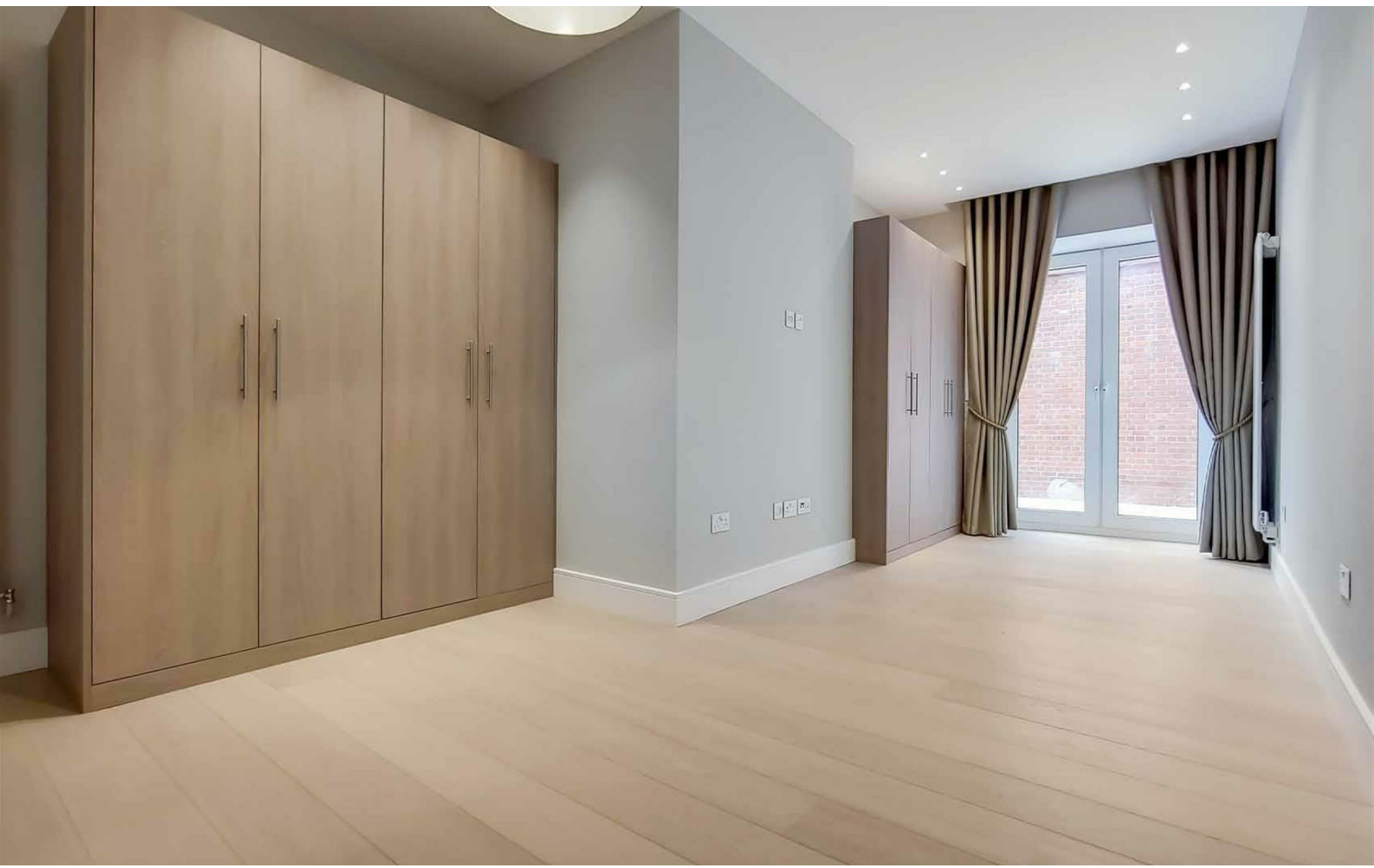
# Fitzjohn's Avenue, Hampstead NW3



## Description

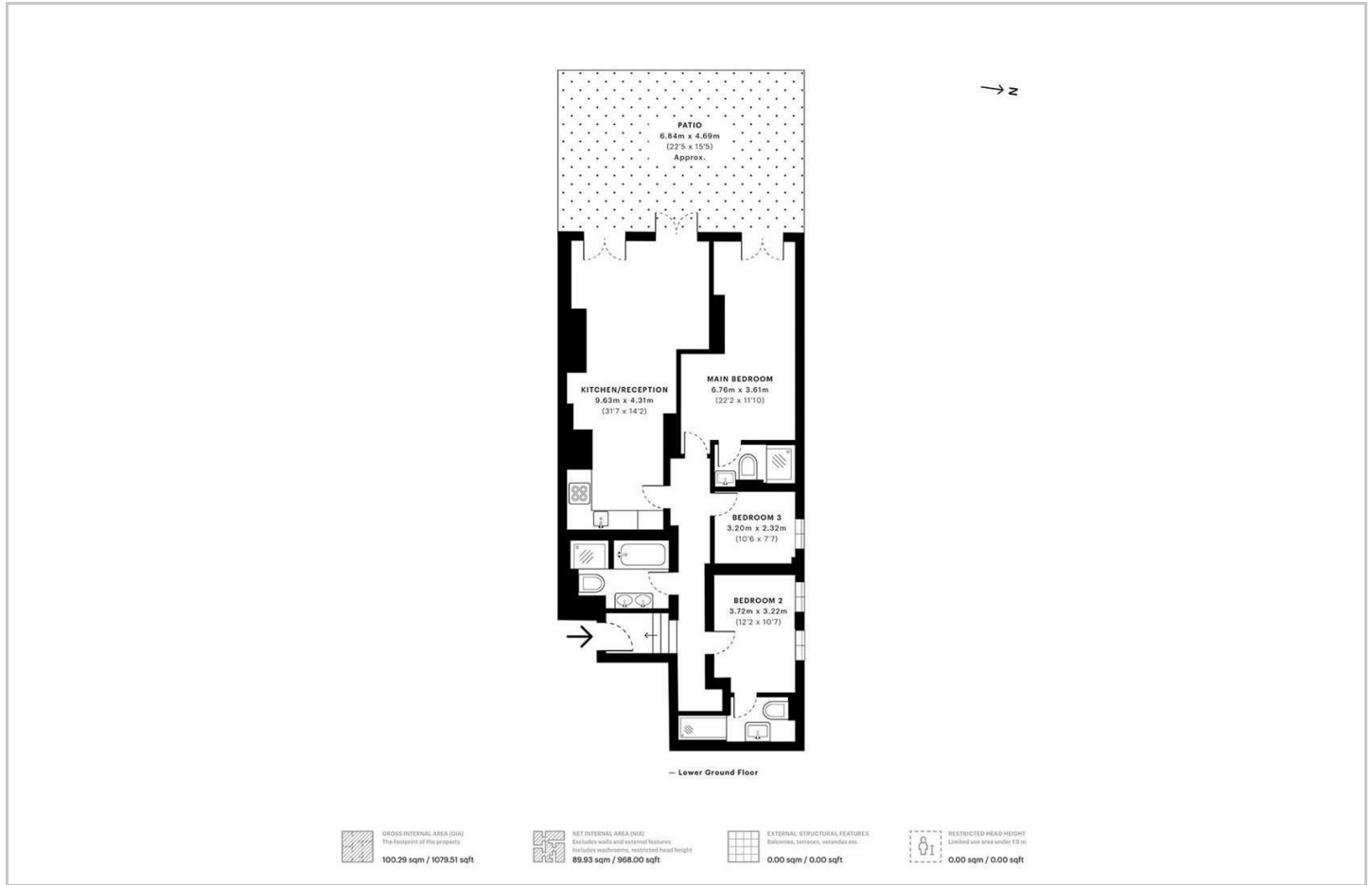
A stunning selection of one, two, three & four bedroom apartments set within this brand newly refurbished period conversion on Fitzjohns Avenue NW3. All the apartments have been tastefully refurbished to an excellent standard throughout using high quality fixtures, fittings, and furnishings. Some of the apartments benefit from a private terrace and those that don't, have access to a beautiful landscaped communal garden. Fitzjohns Avenue is within walking distance to the amenities on Hampstead High Street as well as Finchley Road, with both Finchley Road (Jubilee line) and Swiss Cottage (Jubilee line) Underground stations being less than 0.6 miles away. All apartments can be offered on a Furnished or Unfurnished basis.

- Three bedrooms
- Two en-suite bathrooms
- Large private terrace
- Permit parking available
- Open plan kitchen/reception room
- One family bathroom
- Furnished/Unfurnished

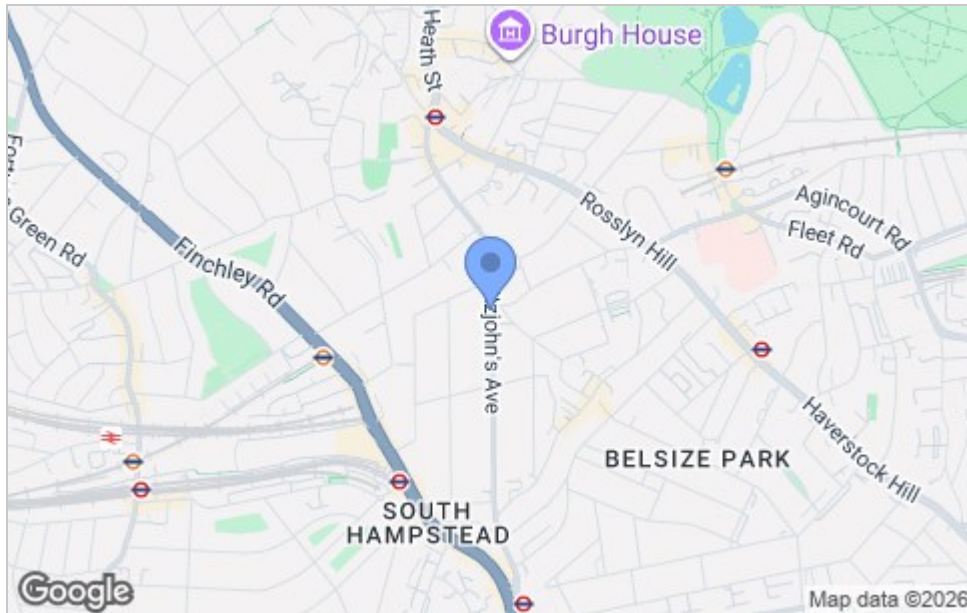




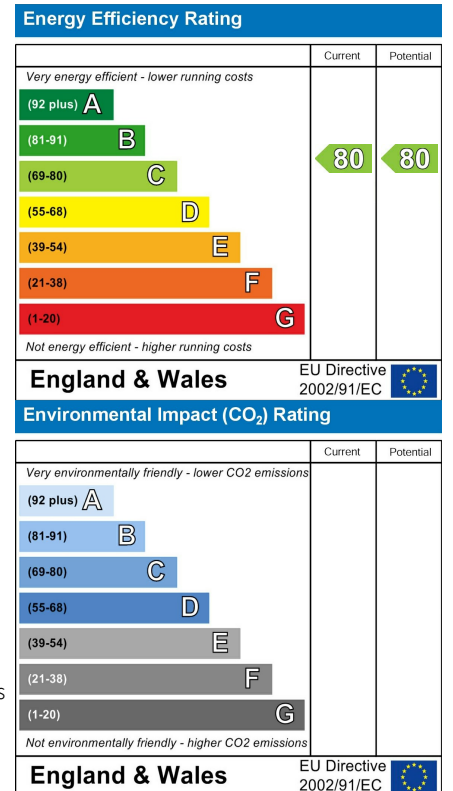
# Floor Plan



# Area Map



# Energy Efficiency Graph



# Viewing

Please contact our Lettings Team on 020 7046 6276 if you wish to arrange a viewing appointment for this property or require further information.



These particulars, whilst believed to be accurate are set out as a general outline only for guidance and do not constitute any part of an offer or contract. Intending purchasers should not rely on them as statements of representation of fact, but must satisfy themselves by inspection or otherwise as to their accuracy. No person in this firm's employment has the authority to make or give any representation or warranty in respect of the property.

020 7046 6276 • [lettings@charmillresidential.co.uk](mailto:lettings@charmillresidential.co.uk) • 51 Maida Vale, Little Venice, London W9 1SD  
[charmillresidential.co.uk](http://charmillresidential.co.uk)