



Fenn Street, Winston STOWMARKET IP14 6LD

welcome to

Fenn Street, Winston STOWMARKET

This charming 2/3 bedroom semi-detached character home is set in a peaceful countryside location close to village amenities, boasting period features throughout. With versatile living spaces, modern updates, beautifully kept front and rear gardens, ample parking and useful outbuildings.

Long Description

Set within a peaceful countryside location yet conveniently close to village amenities, this beautifully maintained 2/3 bedroom semi detached character property offers an abundance of charm, versatility and period features throughout.

The welcoming spacious lounge is rich in character, featuring exposed beams and a cosy log burner set within an attractive brick fireplace, creating a warm and inviting focal point. A separate dining room continues the period theme with a further brick fireplace, providing a wonderful setting for entertaining or family meals.

The kitchen enjoys delightful views over the garden and has been recently updated in keeping with the property's original charm, blending traditional style with modern practicality. A versatile additional reception room offers flexibility and could be used as a snug, home office or third bedroom.

Upstairs, the property offers two well proportioned bedrooms, both featuring character details and carpeted flooring. The modern family bathroom has been recently updated and includes a stylish walk in shower.

To the front, the property is approached via a charming archway draped in jasmine, opening onto a pathway leading to the front door. A generous turfed garden sits at the front with established flower beds and fruit trees, alongside ample off road parking. Also located to the front is an outbuilding with power and light, ideal for use as a summer house or home office.

The rear garden offers a peaceful retreat with a patio area, bordered flower beds and a mature fig tree. There are wooden sheds with power and lighting, providing excellent potential for a workshop or hobby space. Both gardens are beautifully maintained and enhance the tranquil setting of the property.

This delightful home is presented in excellent condition throughout and offers a rare opportunity to enjoy character living in a quiet rural village, while still benefiting from easy access to local amenities.

Lounge

13' 3" Max x 17' 6" (4.04m Max x 5.33m)

Window to front aspect, exposed beams, log burner, radiator, solid oak flooring.

Dining Room

12' 11" x 11' 8" (3.94m x 3.56m)

Window to front aspect, exposed brick fireplace, exposed beams, solid oak flooring.

Kitchen

7' 7" x 22' 1" (2.31m x 6.73m)

Window to rear aspect, built in fridge, base units, worktop, cooker, sink and radiator, Karndean flooring.

Landing

Carpet flooring, leading to bedrooms and bathroom.

Bedroom 1

11' 4" x 13' 5" (3.45m x 4.09m)

Window to side and rear aspect, radiator, carpet flooring.

Bedroom 2

9' 3" x 12' 2" (2.82m x 3.71m)

Window to front and rear aspect, exposed brick and beams, radiator, carpet flooring.

Bedroom 3 / Sung

5' 10" x 11' 7" (1.78m x 3.53m)

Window to rear aspect, radiator, solid oak flooring.

Bathroom

Window to front aspect, walk in shower, w/c, wash basin, cupboard with water heater, radiator, Karndean flooring.

Front Garden

Turfed, flower beds, outbuilding with power and light.

Rear Garden

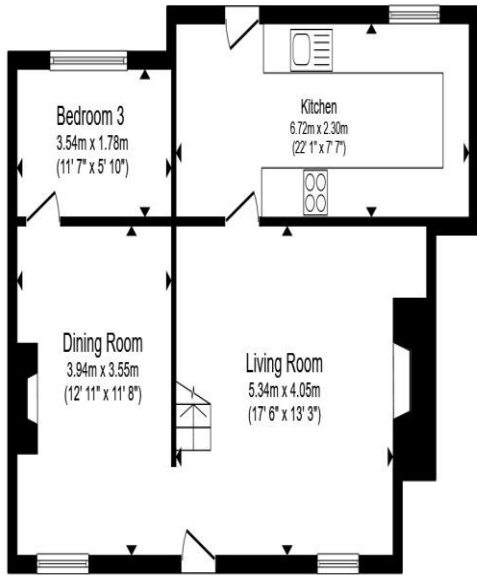
Patio, flower to edge, fig tree, outdoor tap, wooden sheds with power and light.

Parking

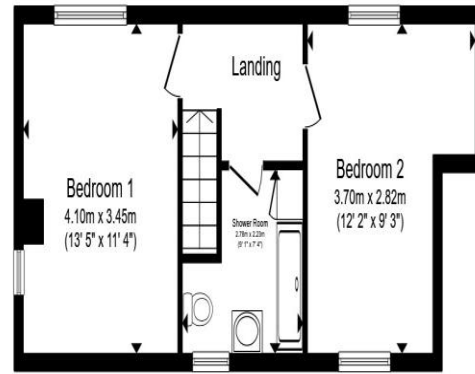
Off road parking for multiple cars.

Agents Note

We have been made aware by the seller that the property suffered storm damage from Storm Babet in 2023. The property has since had an intrusive flood prevention survey and all recommendations completed including high specification flood prevention doors and protective seal flooring. Debenham village itself is also undergoing various works - East Suffolk Catchment Partnership is working to improve the flow of the river and secured the funding from the Environment Agency.



Ground Floor



First Floor

Total floor area 99.5 m² (1,071 sq.ft.) approx

This floor plan is for illustrative purposes only. It is not drawn to scale. Any measurements, floor areas (including any total floor area), openings and orientation are approximate. No details are guaranteed, they cannot be relied upon for any purpose and they do not form part of any agreement. No liability is taken for any error, omission or misstatement. A party must rely upon its own inspection(s). Powered by www.propertybox.io



welcome to
Fenn Street,
Winston STOWMARKET

- Guide Price £325,000 to £335,000
- Charming 2/3 bedroom semi-detached house
- Character features throughout
- Ample off road parking
- Beautiful front and rear gardens

Tenure: Freehold EPC Rating: F
Council Tax Band: C

guide price

£325,000



view this property online williamhbrown.co.uk/Property/FLH105461



Property Ref:
FLH105461 - 0002

1. MONEY LAUNDERING REGULATIONS Intending purchasers will be asked to produce identification documentation at a later stage and we would ask for your co-operation in order that there is no delay in agreeing the sale. 2. These particulars do not constitute part or all of an offer or contract. 3. The measurements indicated are supplied for guidance only and as such must be considered incorrect. Potential buyers are advised to recheck measurements before committing to any expense. 4. We have not tested any apparatus, equipment, fixtures or services and it is in the buyers interest to check the working condition of any appliances. 5. Where an EPC, or a Home Report (Scotland only) is held for this property, it is available for inspection at the branch by appointment. If you require a printed version of a Home Report, you will need to pay a reasonable production charge reflecting printing and other costs. 6. We are not able to offer an opinion either written or verbal on the content of these reports and this must be obtained from your legal representative. 7. Whilst we take care in preparing these reports, a buyer should ensure that his/her legal representative confirms as soon as possible all matters relating to title including the extent and boundaries of the property and other important matters before exchange of contracts.

William H Brown is a trading name of Sequence (UK) Limited which is registered in England and Wales under company number 4268443, Registered Office is Cumbria House, 16-20 Hockliffe Street, Leighton Buzzard, Bedfordshire, LU7 1GN. VAT Registration Number is 500 2481 05.



william h brown



01728 723923



Framlingham@williamhbrown.co.uk



26 Market Hill, Framlingham, WOODBRIDGE,
Suffolk, IP13 9AN



williamhbrown.co.uk