



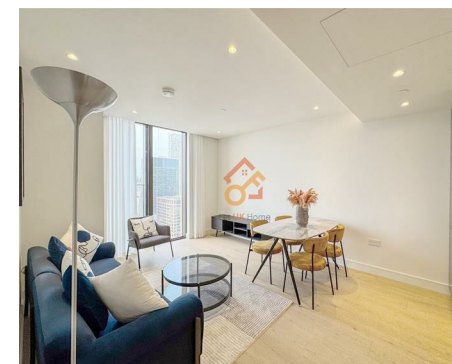
Let **UK** Home

2 Bedrooms

Flat

Located in London

£3,400 Per Month



info@letukhome.co.uk

<https://www.letukhome.co.uk/>

01795 358 886



67 Marsh Wall London

E14 9SW



Let UK Home are excited to offer this spectacular 1 bedroom & 1 study room apartment in the heart of Harcourt Tower part of the South Quay Plaza.

This luxurious apartment features a meticulously designed open-plan living, kitchen area, a double bedroom with built-in wardrobe, a study room which can be bedroom, and a spacious family bathroom. A virtual viewing is provided.

The apartment has a concierge service, a leisure and wellness center and a fitness center (with an outdoor hot tub), iGarden-an advanced shared workspace, supporting conference rooms and outdoor work areas, a game room with an independent soundproof karaoke room, a 20-meter swimming pool, a 56th-floor bar and lounge, and a terrace. It is worth mentioning that the 56th-floor bar is one of the highest residential bars in Europe. Residents can overlook Canary Wharf, the Thames, the City of London, etc., and enjoy a beautiful panoramic view.

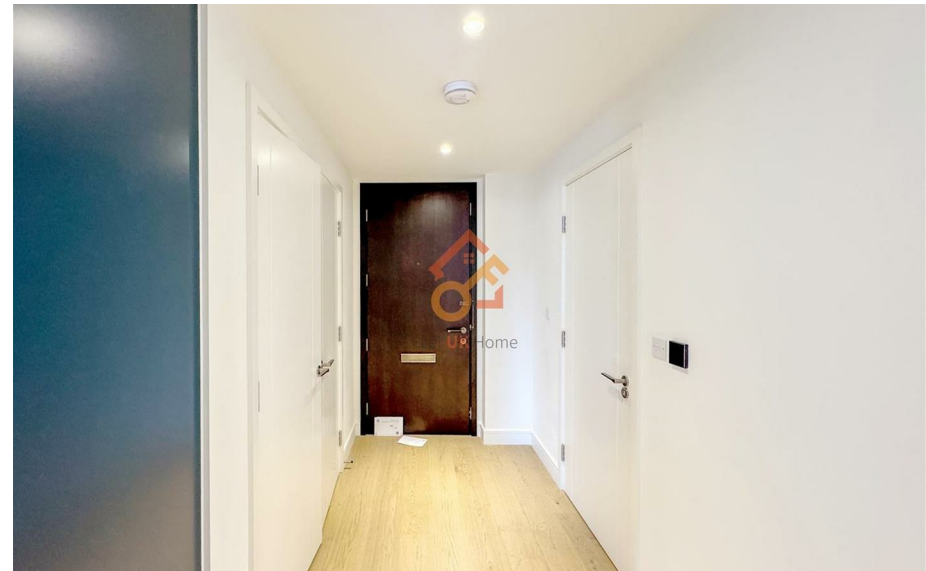
Harcourt Tower is located in the heart of Canary Wharf. Canary Wharf has a beautiful environment, with multiple parks and cool blue riverside spaces, a total of 2.6 acres of green place, and complete supporting facilities for life, such as many internationally renowned hotels and more than 280 shops, cafes, bars, and restaurants. It is a shopping paradise, with everything from well-known brand stores, commercial streets to shopping malls. There are also many well-known cultural attractions near Canary Wharf, such as Tower Bridge, Royal Observatory and National Maritime Museum. In addition, there are many art centers, museums and theaters in the area, such as Canary Wharf Arts Centre, Museum of London and Royal Institute of British Architects.

67 Marsh Wall London

£3,400 Per Month



- 27th Floor
- 24h Security
- Residents Lounge
- Co-working Space
- EPC Rating: B
- Concierge Service
- The Gym & Swimming Pool
- Cinema & Game Room
- Sauna & Steam Room
- Virtual Viewing Available





Total floor area 54 square metres



Let **UK** Home

3F 2 Eastbourne Terrace
 Paddington
 London
 W2 6LG

01795 358 886

info@letukhome.co.uk

Council Tax Band: E

Local Authority:

Agents Note: Whilst every care has been taken to prepare these particulars, they are for guidance purposes only. All measurements are approximate and are for general guidance purposes only and whilst every care has been taken to ensure their accuracy, they should not be relied upon and potential buyers/tenants are advised to recheck the measurements.

Energy Efficiency Rating		Current	Potential
Very energy efficient - lower running costs			
(92 plus) A			
(81-91) B		86	86
(69-80) C			
(55-68) D			
(39-54) E			
(21-38) F			
(1-20) G			
Not energy efficient - higher running costs			
England & Wales	EU Directive 2002/91/EC		

<https://www.letukhome.co.uk/>