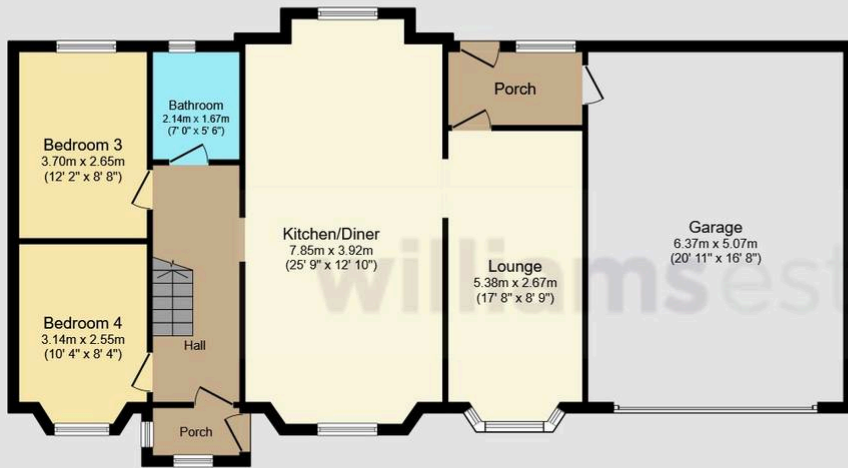




Metz, Allt Y Golch, Carmel, CH8 8QT – £300,000

Tenure: Freehold – Council Tax: D – EPC: E43

This impressive four bedroom semi detached dormer bungalow is situated in a highly sought after village location, offering convenient access to local amenities and a well regarded primary school. The property has been modernised to a high standard throughout, presenting a truly turn-key opportunity for discerning buyers. The spacious accommodation is arranged over two floors and comprises a welcoming entrance hall, a bright and airy living room, a contemporary kitchen and dining area, and a stylish family bathroom. Each of the four generous bedrooms has been thoughtfully designed to maximise comfort and space, making this home ideal for families or those seeking flexible living arrangements. Additional features include double glazing, gas central heating, and ample storage throughout. The property has had a new boiler, radiators, electrics, plumbing and a new electric garage door. The property also benefits from a double garage, providing secure parking and further storage options.



Ground Floor
Floor area 119.3 sq.m. (1,285 sq.ft.)



First Floor
Floor area 37.1 sq.m. (399 sq.ft.)

Total floor area: 156.4 sq.m. (1,683 sq.ft.)

This floor plan is for illustrative purposes only. It is not drawn to scale. Any measurements, floor areas (including any total floor area), openings and orientations are approximate. No details are guaranteed, they cannot be relied upon for any purpose and do not form any part of any agreement. No liability is taken for any error, omission or misstatement. A party must rely upon its own inspection(s). Powered by www.Propertybox.io



YOUR FREE
PROPERTY REPORT



WE OFFER FREE ADVICE

MORTGAGES - SURVEYS - SOLICITORS

