



19 Main Street, Chryston, Glasgow, G69 9DH

Offers Over £320,000

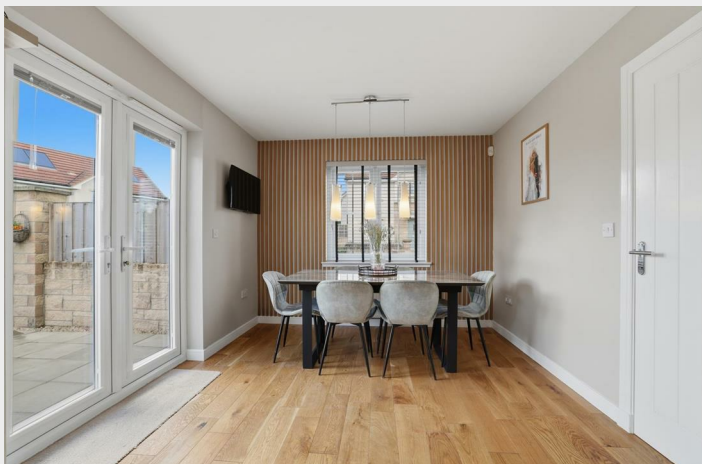
- Modern Detached Family Home
- Master En-Suite
- Stunning Views of Campsie Hills
- Downstairs W/C
- EER- B
- 3 Double Bedrooms
- Modern Dining Kitchen
- Luxurious Bathroom Suite
- Contemporary Styling Throughout
- Viewings Strictly By Appointment Only

19 Main Street, Glasgow G69 9DH

Set within one of Chryston's most sought-after addresses and enjoying stunning views towards the Campsie Hills, this exceptional detached family home is presented to the market in true walk-in condition, offering stylish and contemporary living throughout.

 3  2  2  B

Council Tax Band: E



From the moment you step inside, the impressive welcoming hallway immediately sets the tone for the quality and space on offer. To the front of the property, the beautifully proportioned lounge is flooded with natural light, creating a warm and inviting space ideal for both relaxing and entertaining.

To the rear, the sleek modern dining kitchen forms the heart of the home. Thoughtfully designed, the kitchen offers an excellent range of floor and wall-mounted units, generous worktop space and integrated appliances. The dining area enjoys direct access via patio doors to the fully enclosed rear garden, creating a seamless indoor/outdoor living experience. The peaceful garden has been carefully landscaped and features an attractive patio area, perfect for entertaining, al fresco dining and socialising.

Completing the ground floor accommodation is a stylish guest w/c together with bespoke under-stair storage providing excellent practical storage solutions.

The staircase leads to the upper level where there are three well-proportioned double bedrooms. The impressive principal suite benefits from bespoke fitted wardrobes and a luxurious en-suite shower room. A contemporary family bathroom and additional hallway storage cupboard further enhance the upper accommodation. In addition, the property benefits from a partially floored loft complete with access ladder, offering superb additional storage space.

Externally, the home occupies a generously sized corner plot with wraparound gardens, providing excellent outdoor space for families and entertaining alike. A monoblocked driveway offers parking for multiple vehicles and is complemented by an electric vehicle charging point.

This is a rare opportunity to acquire a truly stunning modern family home in immaculate condition within a prime Chryston location.

Home Report Available on Request

EER - B
Viewings Strictly By Appointment

Chryston is ideally located for those who relish the opportunity to enjoy outdoor activities, yet still want to be able to commute across the central belt with ease. Chryston and Muirhead have an excellent range of amenities including local shops, doctors surgery, Bannantynes Health Club and restaurants. Glasgow City Centre can be reached via the upgraded Stepps motorway link in approximately fifteen minutes by car and there is easy access to M8/M80/M73/M74 motorway network and throughout the Central Belt. Schooling can be found locally at both Primary and Secondary levels. Lenzie or Stepps train station is situated a short distance from the house, which both provides links to and from Glasgow Queen Street and Edinburgh Waverley.





