



JON KEYTE  
exp  
FOR SALE  
01803 914123  
www.exp.co.uk

JON KEYTE

exp<sup>®</sup> UK

@ jon.keyte@exp.uk.com

🌐 jonkeyte.exp.uk.com

☎ 07445 265 314

33 Hennock Road,  
Guide Price £280,000

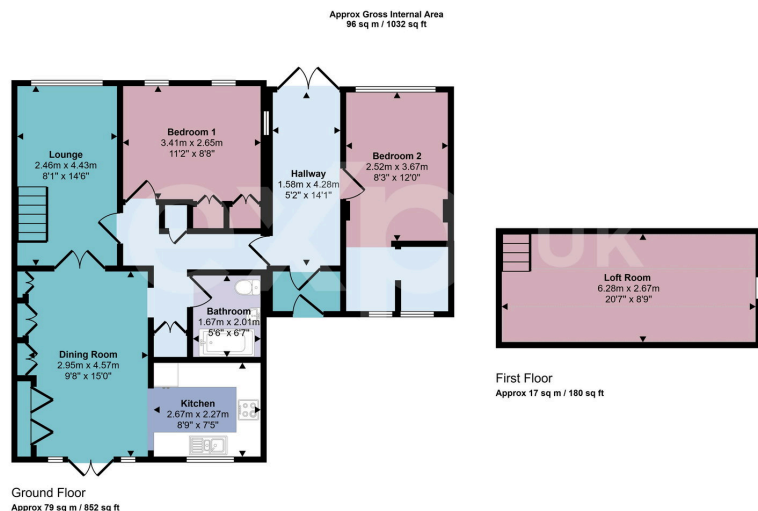
🛏 2 🚿 1 🚗 1



- Please Quote JK1243
- Two Double Bedrooms
- Stunning Sea Views to 'Thatchers Rock'
- Useful Loft Room
- Mature Southerly Facing Rear Garden
- Spacious Semi-Detached Bungalow in Roselands Area
- Beautiful Open Plan Kitchen/ Dining Room
- Driveway to the Front
- Lounge Overlooking the Rear Garden
- Lovely & Quiet Tucked Away Location



**Guide Price £280,000 - £290,000 Please Quote JK1243 - A** beautifully presented two-bedroom semi-detached bungalow in the sought-after Roselands area of Paignton, enjoying superb sea views across to Thatchers Rock. The property is light and airy throughout, with an entrance hall leading to a useful office area. There are two generous double bedrooms, the principal benefitting from a dressing area with ample storage and potential for an en-suite. A modern bathroom with shower over serves the home. The open-plan kitchen/diner is a standout feature, offering built-in appliances and excellent entertaining space, complete with a clever pull-down guest bed. The lounge overlooks the attractive rear garden, with steps rising to a useful loft room (restricted head height). Outside, the front offers driveway parking and a gravelled garden, while the south-facing rear garden boasts a covered seating area, patio sun terrace, and has vibrant camellias.



This floorplan is only for illustrative purposes and is not to scale. Measurements of rooms, doors, windows, and any items are approximate and no responsibility is taken for any error, omission or mis-statement. Icons of items such as bathroom suites are representations only and may not look like the real items. Made with Made Snappy 360.

Energy Efficiency Rating		Current	Potential
Very energy efficient - lower running costs			
(92 plus)	<b>A</b>		
(81-91)	<b>B</b>		<b>83</b>
(69-80)	<b>C</b>		
(55-68)	<b>D</b>		
(39-54)	<b>E</b>	<b>50</b>	
(21-38)	<b>F</b>		
(1-20)	<b>G</b>		
Not energy efficient - higher running costs			
<b>England &amp; Wales</b>		EU Directive 2002/91/EC	