



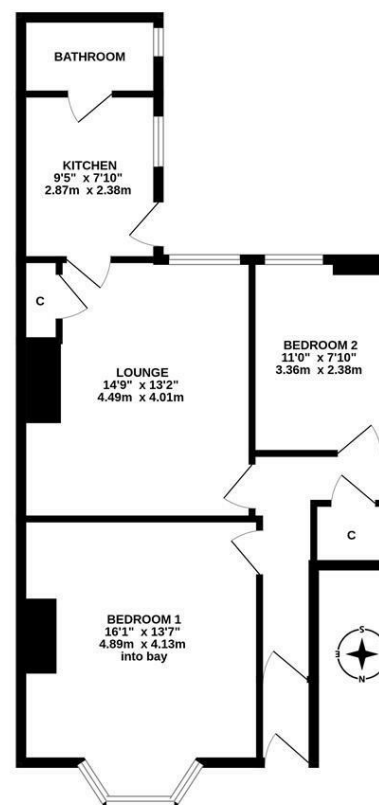
Fully Refurbished with a South Facing Private Rear Yard and No Onward Chain. This two bedroom lower 'Tyneside' flat is ideally located on the south backing side Trew hitt Road, Heaton. Close to the cafes and shops of Chillingham Road, parks at both Iris Brickyard and South Heaton. Trew hitt Road also provides good transport links to the City Centre and beyond.



The accommodation briefly comprises: entrance porch to entrance hall with under-stairs storage cupboard; lounge with part fitted alcove storage; kitchen with fitted units, quartz work surfaces, underfloor heating and side door access to the yard; stylish bathroom with three piece suite; two bedrooms, bedroom one measuring 16ft with walk in bay. Externally, a private south facing yard with wall boundaries and gated providing off-street parking and further access to the rear service lane. Early viewings are essential to avoid disappointment.

Lower 'Tyneside' Flat | Recently Refurbished | Two Bedrooms | 649 Sq ft (60.3m²) } Lounge | Kitchen | Stylish Bathroom | Private South Facing Yard | Popular Location | No Onward Chain | Leasehold - Tyneside Lease with Peppercorn Rent - 992 Years Remaining | Council Tax Band A | EPC - C

GROUND FLOOR
649 sq.ft. (60.3 sq.m.) approx.



TOTAL FLOOR AREA : 649 sq.ft. (60.3 sq.m.) approx.

Whilst every attempt has been made to ensure the accuracy of the floorplan contained here, measurements of doors, windows, rooms and any other items are approximate and no responsibility is taken for any error, omission or misstatement. This plan is for illustrative purposes only and should be used as such by any prospective purchaser. The services, systems and appliances shown have not been tested and no guarantee as to their operability or efficiency can be given.
Made with Metropix ©2025

Offers Over £165,000

IMPORTANT NOTE: These particulars and the descriptions and measurements herein do not constitute representation and whilst every effort has been made to ensure accuracy, this cannot be guaranteed.

