



**9 Juniper Drive, Maidenhead SL6 8RE**

**welcome to**

**9 Juniper Drive, Maidenhead**

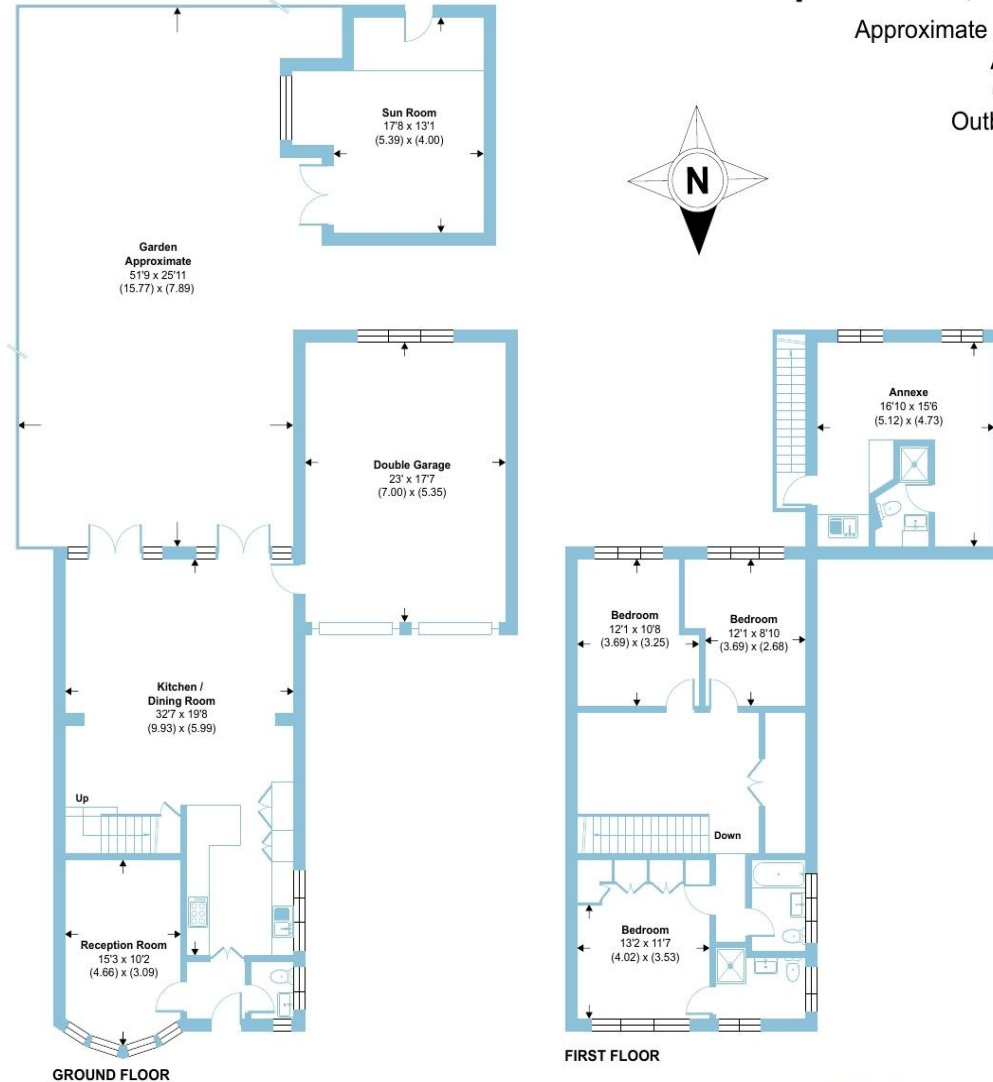
This well-presented three/four bedroom, three bathroom detached family home offers spacious and flexible accommodation, perfectly suited to multi-generational living thanks to the impressive self-contained annexe located above the double garage.



# Juniper Drive, Maidenhead, SL6

Approximate Area = 1523 sq ft / 141.4 sq m  
 Annexe = 261 sq ft / 24.2 sq m  
 Garage = 403 sq ft / 37.4 sq m  
 Outbuilding = 247 sq ft / 22.9 sq m  
 Total = 2434 sq ft / 225.9 sq m

For identification only - Not to scale



GROUND FLOOR

FIRST FLOOR



Floor plan produced in accordance with RICS Property Measurement 2nd Edition, incorporating International Property Measurement Standards (IPMS2 Residential). © nichecom 2026. Produced for Barnard Marcus. REF: 1418023



This well-presented extended detached family home offers spacious and flexible accommodation, perfectly suited to multi-generational living thanks to the impressive self-contained annex located above the double garage. The heart of the home is the stunning 33' x 19' open-plan living room and kitchen — a bright, airy space featuring an excellent range of units and two sets of twin double-glazed doors opening directly onto the rear garden. From here, there is also convenient access into the substantial 22' x 17' double garage, which presents exciting potential for conversion into additional living space if desired. Completing the ground floor is a welcoming front reception room, snug/office with parquet flooring under the carpet and a cloakroom.

Upstairs, a generous landing with a large built-in cupboard leads to the principal bedroom with fitted wardrobes and an en-suite shower room, alongside two further double bedrooms and a modern family bathroom.

The annexe, accessed via its own private entrance from the rear garden, provides superb independence for relatives or guests, offering open-plan living and a contemporary shower room.

Outside, the secluded rear garden is thoughtfully maintained, mainly laid to lawn with a spacious patio, surrounding pathway, and access to a lovely summerhouse — ideal as a home office. Juniper Drive is a desirable cul-de-sac within easy reach of the town centre and mainline station.

welcome to

## 9 Juniper Drive, Maidenhead

- SPACIOUS DETACHED FAMILY HOME
- EXTENDED ACCOMMODATION
- POTENTIAL TO EXTEND TO THE 3<sup>RD</sup> FLOOR
- SELF-CONTAINED ANNEXE
- LARGE 33' X 19' OPEN PLAN LIVING/KITCHEN/FAMILY AREA
- LARGE DOUBLE GARAGE - PERFECT FOR CONVERSION
- CLOSE TO RIVER THAMES
- EASY ACCESS TO TOWN CENTRE & STATION

Tenure: Freehold EPC Rating: C

Council Tax Band: F

**£875,000**



Please note the marker reflects the postcode not the actual property

check out more properties at [rogerplatt.co.uk](http://rogerplatt.co.uk)



Property Ref:  
MHD118458 - 0004

1. MONEY LAUNDERING REGULATIONS Intending purchasers will be asked to produce identification documentation at a later stage and we would ask for your co-operation in order that there is no delay in agreeing the sale. 2. These particulars do not constitute part or all of an offer or contract. 3. The measurements indicated are supplied for guidance only and as such must be considered incorrect. Potential buyers are advised to recheck measurements before committing to any expense. 4. We have not tested any apparatus, equipment, fixtures or services and it is in the buyers interest to check the working condition of any appliances. 5. Where an EPC, or a Home Report (Scotland only) is held for this property, it is available for inspection at the branch by appointment. If you require a printed version of a Home Report, you will need to pay a reasonable production charge reflecting printing and other costs. 6. We are not able to offer an opinion either written or verbal on the content of these reports and this must be obtained from your legal representative. 7. Whilst we take care in preparing these reports, a buyer should ensure that his/her legal representative confirms as soon as possible all matters relating to title including the extent and boundaries of the property and other important matters before exchange of contracts.

Roger Platt is a trading name of Sequence (UK) Limited which is registered in England and Wales under company number 4268443, Registered Office is Cumbria House, 16-20 Hockliffe Street, Leighton Buzzard, Bedfordshire, LU7 1GN. VAT Registration Number is 500 2481 05.

  
roger platt



**01628 773333**



[Maidenhead@rogerplatt.co.uk](mailto:Maidenhead@rogerplatt.co.uk)



25-29 Queen Street, MAIDENHEAD, Berkshire,  
SL6 1NB



[rogerplatt.co.uk](http://rogerplatt.co.uk)