



Flat

**4, PARKGATE ROAD,  
ST MARY'S, SW11 4PJ**

Per Month  
**£2,800**

Available: 20th May 2026

FEATURES



**Huddletons**

# 3 Bedroom Flat located in London

A bright and well-proportioned 3-bedroom flat ideally located in the heart of Battersea, just moments from the stunning Battersea Park and the River Thames. Situated on the first floor of a secure, purpose-built block with lift access and a communal roof terrace, this spacious flat offers excellent living for professionals, sharers, or a small family.

Call us on

0207 205 4411

[info@huddletons.com](mailto:info@huddletons.com)

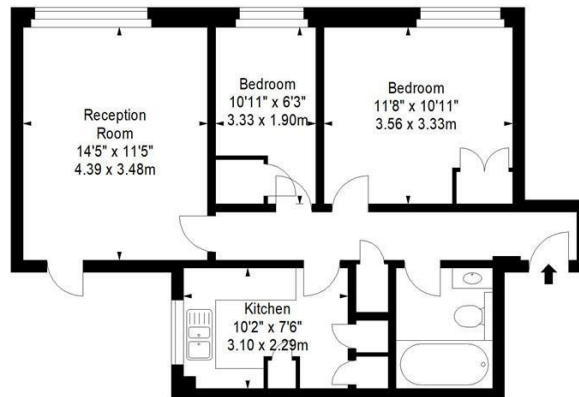
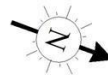
<http://www.huddletons.com>

Council Tax Band

C

St.Mary Le Park Court,  
Parkgate Road, SW11

Approx. Gross Internal Area \*  
607 Ft<sup>2</sup> - 56.39 M<sup>2</sup>



First Floor

Every attempt has been made to ensure the accuracy of this floor plan however, measurements are approximate and for illustration purposes only. Measured in accordance with the RICS code of measuring practice. Not to scale

Energy Efficiency Rating		Current	Potential
<i>Very energy efficient - lower running costs</i>			
(92 plus) A			
(81-91) B			
(69-80) C		78	81
(55-68) D			
(39-54) E			
(21-38) F			
(1-20) G			
<i>Not energy efficient - higher running costs</i>			
England & Wales		EU Directive 2002/91/EC	

Agents Note: Whilst every care has been taken to prepare these particulars, they are for guidance purposes only. All measurements are approximate and are for general guidance purposes only and whilst every care has been taken to ensure their accuracy, they should not be relied upon and potential buyers are advised to recheck the measurements.

# Huddletons