



Plover Way, SE16

£375,000

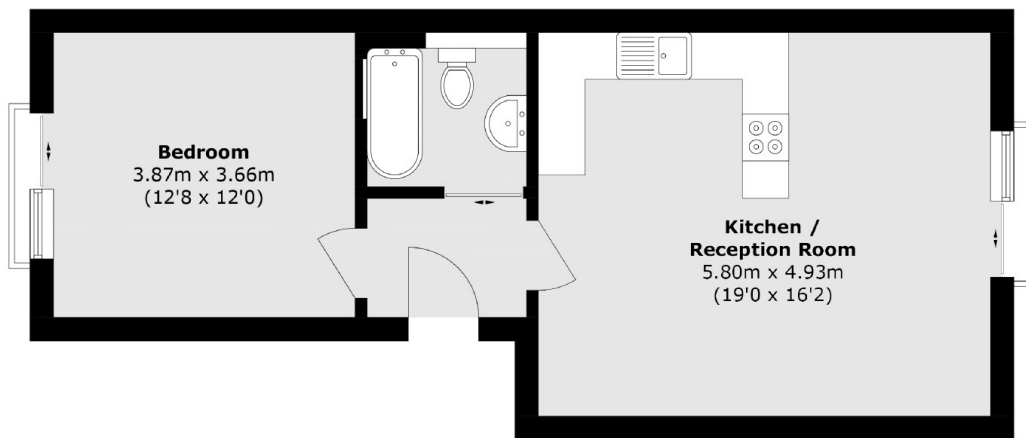
Situated with a quiet development, this bright and airy one double bedroom flat is immaculately presented and boasts a large open plan kitchen and living space, new bathroom, ample storage, parking and two Juliette balconies.

Plover Way is located 0.5 miles from Canada Water station and 0.5 miles from Surrey Quays station offering excellent transport links to all of London. A wide variety of shops, cafés and delis are also close by.

Features

- One Double Bedroom
- Excellent Condition
- Quiet Development
- Parking
- New Lease
- Fantastic Transport Links

Plover Way, London, SE16



Total area (approx.): 51.3 sq. m (552.1 sq. ft)