



Connells

Woodhouse Mews
Blandford St. Mary Blandford Forum



Property Description

This beautifully presented one-bedroom riverside apartment combines modern living with an enviable outlook in a highly desirable Dorset location. The home features a spacious double bedroom and a large open-plan living room and kitchen, designed to create a bright, welcoming space. The living area is enhanced by French doors leading out to a private balcony, offering peaceful views overlooking the river—perfect for enjoying tranquil mornings or unwinding at the end of the day. The stylish kitchen is fitted with integrated appliances, providing a sleek and practical environment for everyday cooking. Completing the accommodation is a contemporary shower room, adding to the property's comfort and convenience.

Situated in the charming Georgian market town of Blandford Forum, the apartment benefits from a setting rich in history and local character.

Blandford Forum:

Blandford Forum is noted for its beautifully preserved Georgian architecture, much of which was rebuilt following a major fire in 1731, resulting in one of England's most complete small Georgian townscapes. Set on the banks of the River Stour, the town offers a welcoming atmosphere with its elegant Market Place, lined with independent shops, cafés, restaurants, and traditional pubs, making it a lively and attractive hub for both residents and visitors.

Contact Connells on 01258 452327 today to arrange your viewing!



Entrance Hall

The entrance hall has an integrated wardrobe and storage space.

Lounge

The lounge has double glazed French doors offering access to the balcony and a radiator.

Kitchen

The kitchen has a double glazed window to the rear of the property. It has both wall and base units, a one and a quarter bowl sink and drainer, an integrated oven and integrated gas hob, a fridge freezer, washing machine, a tumble dryer and an extractor hood.

Bedroom One

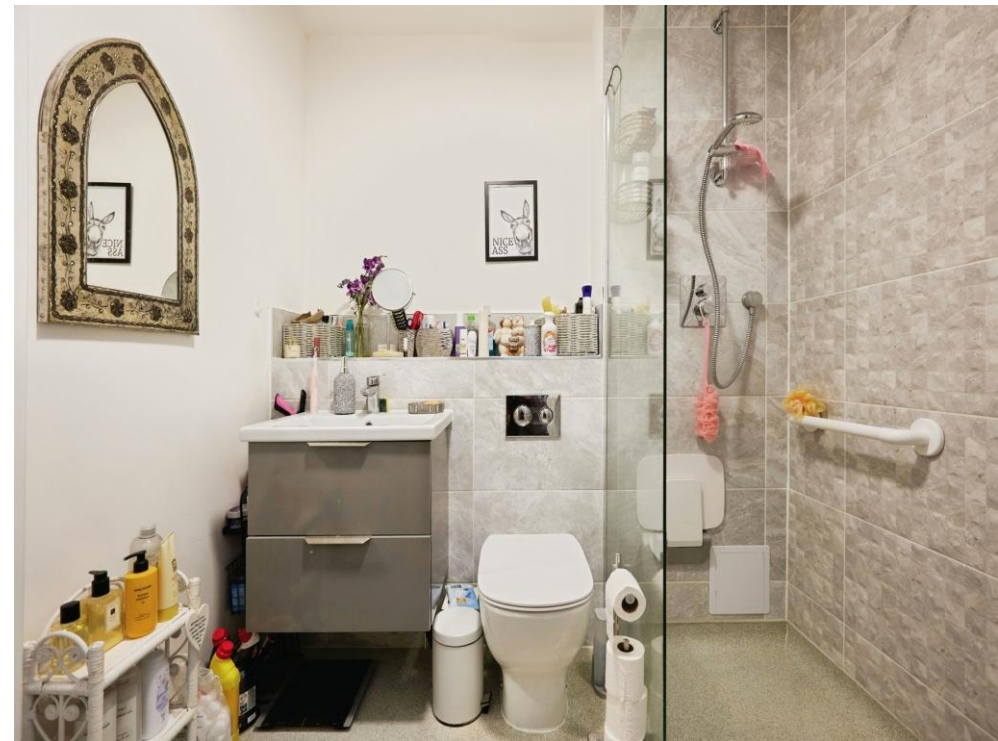
Bedroom one has a double glazed window to the side of the property.

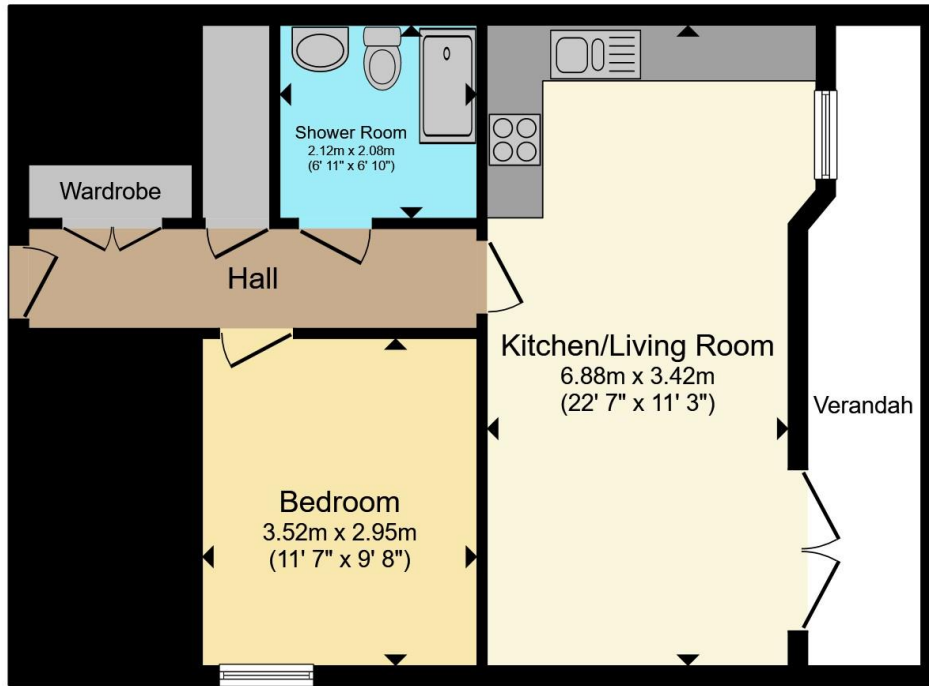
Shower Room

The part tiled shower room has a shower cubicle, WC and a hand wash basin with a vanity unit,

Balcony

The balcony overlooks the river. It has an external light and space for seating.





Floor Plan

Total floor area 56.6 m² (609 sq.ft.) approx

This floor plan is for illustrative purposes only. It is not drawn to scale. Any measurements, floor areas (including any total floor area), openings and orientation are approximate. No details are guaranteed, they cannot be relied upon for any purpose and they do not form part of any agreement. No liability is taken for any error, omission or misstatement. A party must rely upon its own inspection(s). Powered by www.propertybox.io



To view this property please contact Connells on

T 01258 452 327

E blandfordforum@connells.co.uk

20 Salisbury Street
BLANDFORD FORUM DT11 7AR

EPC Rating: B

Council Tax
Band: A

Service Charge: Ask
Agent

Ground Rent:
Ask Agent

Tenure: Leasehold

view this property online connells.co.uk/Property/BLF306462

This is a Leasehold property with details as follows; Term of Lease 999 years from 01 Jan 2022. Should you require further information please contact the branch. Please Note additional fees could be incurred for items such as Leasehold packs.



1. MONEY LAUNDERING REGULATIONS Intending purchasers will be asked to produce identification documentation at a later stage and we would ask for your co-operation in order that there will be no delay in agreeing the sale. 2. These particulars do not constitute part or all of an offer or contract. 3. The measurements indicated are supplied for guidance only and as such must be considered incorrect. Potential buyers are advised to recheck measurements before committing to any expense. 4. We have not tested any apparatus, equipment, fixtures, fittings or services and it is in the buyers interest to check the working condition of any appliances.

Connells Residential is registered in England and Wales under company number 1489613, Registered Office is Cumbria House, 16-20 Hockliffe Street, Leighton Buzzard, Bedfordshire, LU7 1GN. VAT Registration Number is 500 2481 05.

See all our properties at www.connells.co.uk | www.rightmove.co.uk | www.zoopla.co.uk

Property Ref: BLF306462 - 0005