



## OXBERRY AVENUE, SW6

£2,250,000

Set on a highly desirable residential street just moments from Bishops Park and the River Thames, this rarely available and fully extended freehold house offers beautifully balanced living space, elegant design,

Four double bedrooms

Three bathrooms

South-west facing garden

Roof terrace

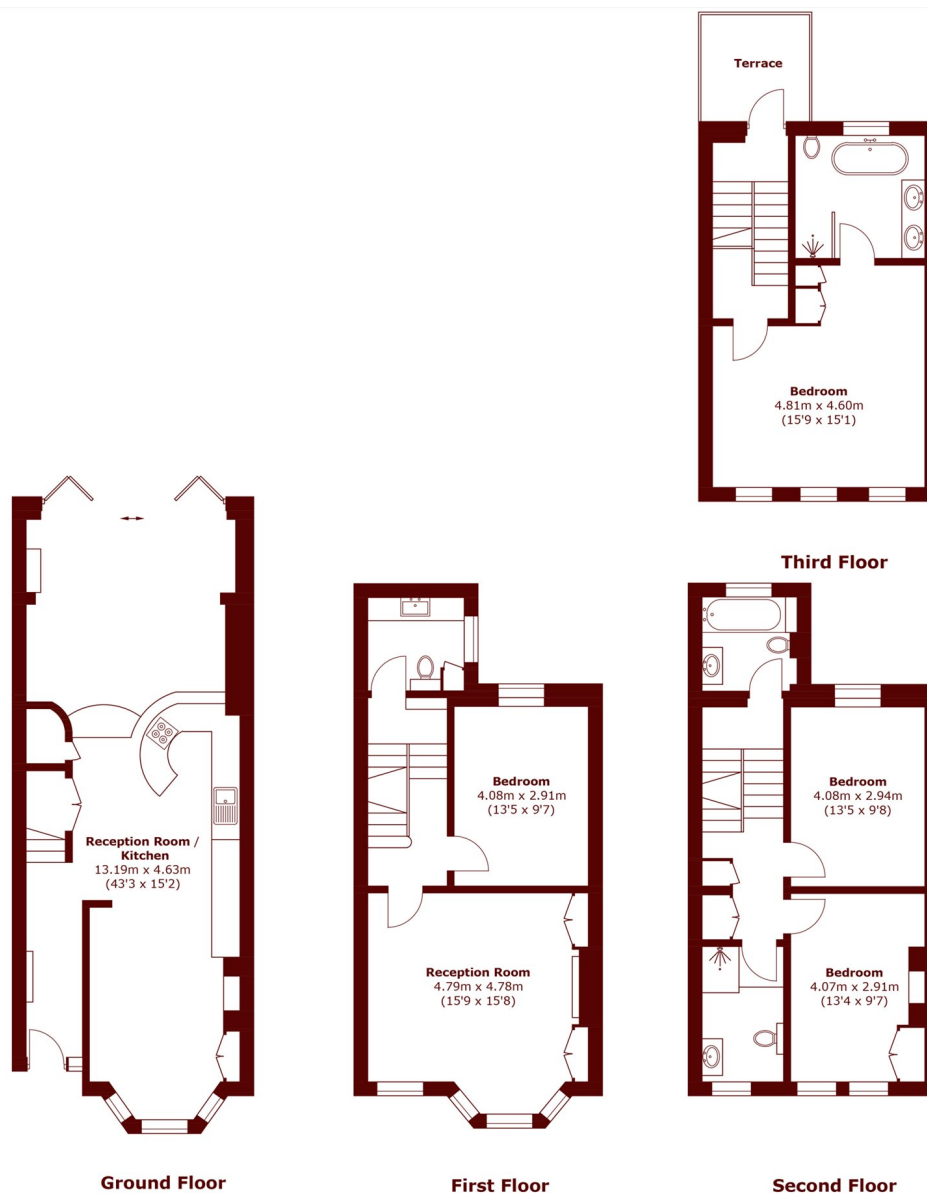
Near Bishops Park

Freehold

@marshandparsons  
marshandparsons.co.uk

MARSH &  
PARSONS

# STEP INSIDE OXBERRY AVENUE



Total area (approx.): 183.2 sq. m (1971.9 sq. ft)  
Terrace : 5.4 sq. m (58.1 sq. ft)

**Bishops Park**  
020 7993 9888

Energy Rating: D We aim to make our particulars both accurate and reliable. However, they are not guaranteed; nor do they form part of an offer or contract. If you require clarification on any points then please contact us, especially if you're traveling some distance to view. Please note that appliances and heating systems have not been tested and therefore no warranties can be given as to their good working order

**MARSH &  
PARSONS**