

Let **UK** Home

2 Bedrooms

Flat

**Located
in Manchester**

£1,450 Per Month



pmadmin@letukhome.co.uk

<https://www.letukhome.co.uk/>

01615219812



501 Chester Road Manchester

M16 9QX



Let UK Home are excited to offer this spectacular two-bedroom apartment in Westpoint, located in the heart of Trafford, Manchester.

This property comprises a large bright open plan kitchen and living room, two double bedrooms with walk-in closets (master en-suite), a large family sized bathroom and ample storage. Westpoint features an concierge, on-site gym, co-workspaces and a residents' lounge.

The apartment is located between Manchester city center and Media City UK. Opposite the apartment is the Trafford Bar Station, where multiple buses go directly to the city center. It is also within walking distance to the Trafford Bar tram station connecting to the city's main street, Market Street.

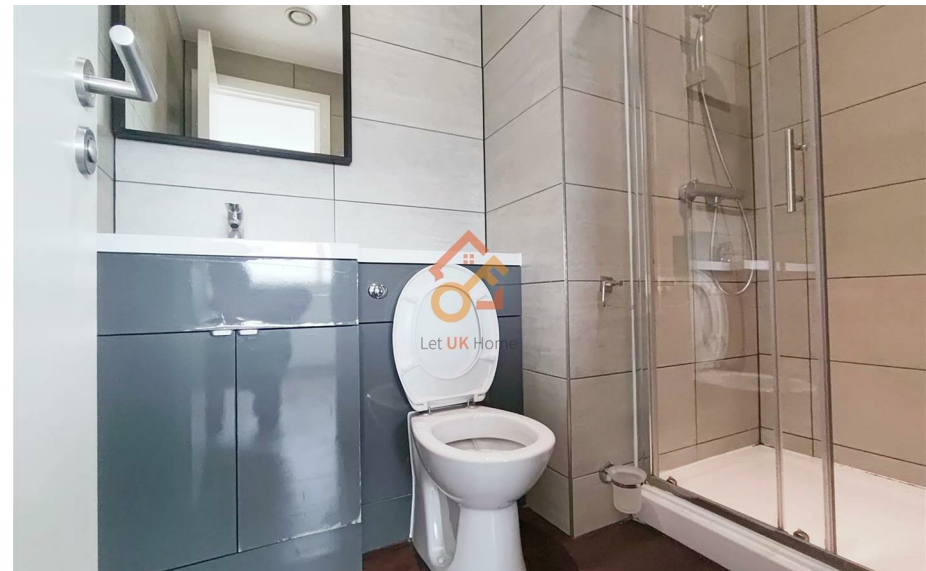
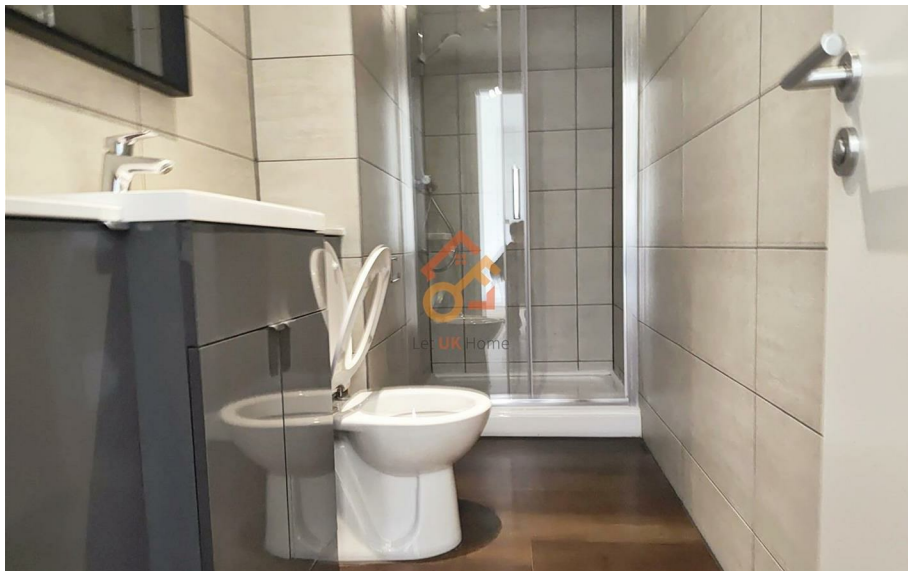
The picturesque water front of Salford Quays is also situated nearby, offering a serene and peaceful setting to relax close to home. You are also not far from sport and entertainment options. Manchester's famous football stadiums Old Trafford (home to Manchester United) and the Etihad (home to Manchester City) both are within walking distance from the apartment. For cultural activities locally, residents are situated near to Media City which offers a variety of leisure and nightlife activities.

501 Chester Road Manchester

£1,450 Per Month



- 8th Floor
- 24h Security
- Residents Lounge
- EP C Rating: C
- Concierge Service
- The Gym
- Co-working Space



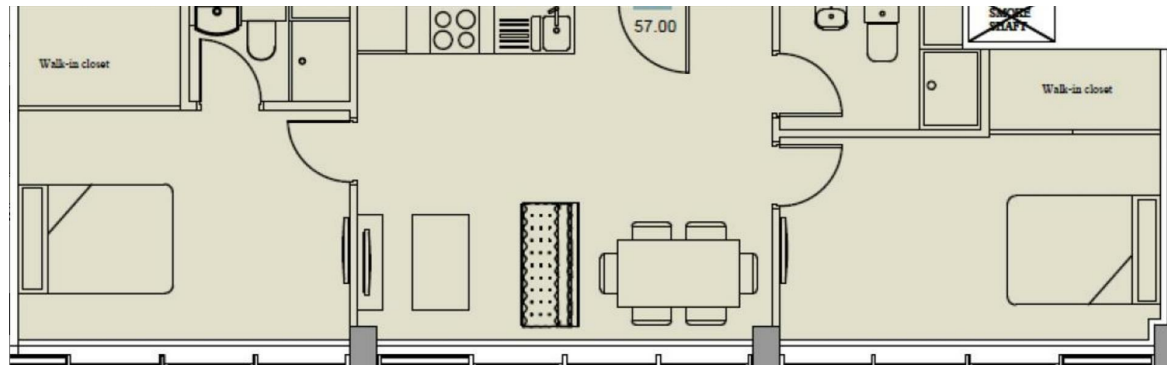


Let **UK** Home

1/F, St James Tower 7 Charlotte
Street
Manchester
M1 4DZ

01615219812

pmadmin@letukhome.co.uk



Council Tax Band: C

Local Authority:

Agents Note: Whilst every care has been taken to prepare these particulars, they are for guidance purposes only. All measurements are approximate and are for general guidance purposes only and whilst every care has been taken to ensure their accuracy, they should not be relied upon and potential buyers/tenants are advised to recheck the measurements.

Energy Efficiency Rating		Current	Potential
Very energy efficient - lower running costs			
(92 plus) A			
(81-91) B			
(69-80) C		80	80
(55-68) D			
(39-54) E			
(21-38) F			
(1-20) G			
Not energy efficient - higher running costs			
England & Wales		EU Directive 2002/91/EC	

<https://www.letukhome.co.uk/>