

THE COLERIDGE

Three bedroom house



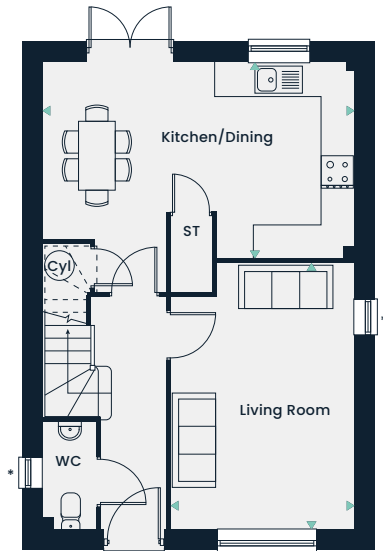
HOMES 4, 5, 13, 14, 25, 27, 43, 44, 51, 52, 64, 68, 69, 79, 80



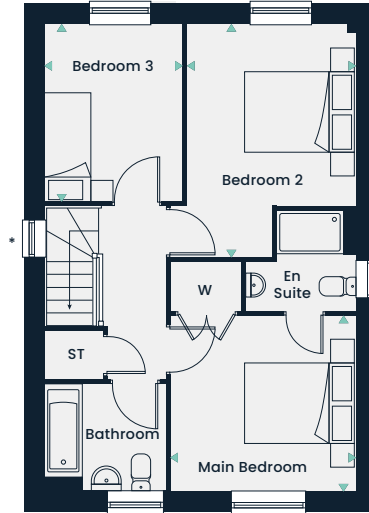
TILIA
HOMES

THE COLERIDGE

Three bedroom house



*Window here only on certain plots
Living room – 4, 5, 13, 14, 25, 43, 44, 51, 52, 64, 79, 80
WC – 88,89



*Window here for plots 58 & 69 only

Ground Floor

Kitchen/Dining

5.63m x 3.53m 18'5" x 11'7"

Living Room

4.51m x 3.32m 14'10" x 10'10"

First Floor

Main Bedroom

3.5m x 3.36m 11'6" x 11'

Bedroom 2

4.22m x 3.04m 13'10" x 10'

Bedroom 3

3.19m x 2.50m 10'6" x 8'2"

95.2m² | 1024.7ft²

- Dimensions
- Cyl Cylinder
- ST Storage
- WC Cloakroom
- W Wardrobe

This floorplan is indicative of this house type only and does not reflect home specific variations. Any and all such variations, for example additional windows, are shown on home specific drawings for this development. The positions of the appliances and furniture are indicative and not to scale. Please speak to our sales consultant for details. Computer generated images are a generic indication of a finished house type but are not specific to this development. External finishes, materials and appearance will vary, please refer to home specific drawing and information in sales office.