



## Abercorn Place, NW8

£1,000,000

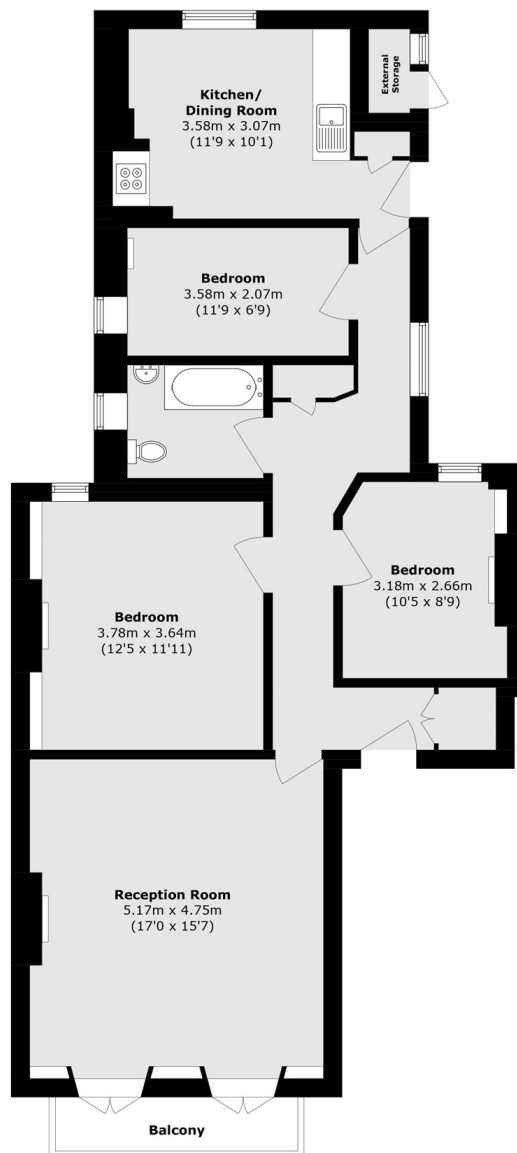
A bright first floor three bedroom apartment in an attractive period conversion, featuring high ceilings and an eat-in kitchen. The property is in a quiet location overlooking gardens at the rear, is offered chain free and provides well balanced accommodation throughout.

Situated in a desirable St John's Wood location, the property is close to the boutiques, cafés, and restaurants of St John's Wood High Street. Regent's Park and Primrose Hill are both within easy reach. Transport links include St John's Wood underground station (Jubilee line) and Maida Vale ( Bakerloo line).

### Features

- Three Bedrooms
- Share of Freehold
- Chain Free
- High Ceilings
- Period Conversion
- First Floor

# Abercorn Place, London, NW8



## First Floor

Total area (approx.): 90.7 sq. m (976.3 sq. ft)  
Balcony area (approx.): 3.4 sq. m (36.6 sq. ft)  
External Storage area (approx.): 1.2 sq. m (12.9 sq. ft)