



10a Wilbury Crescent, Hove

Hove

£700,000

# 10a Wilbury Crescent

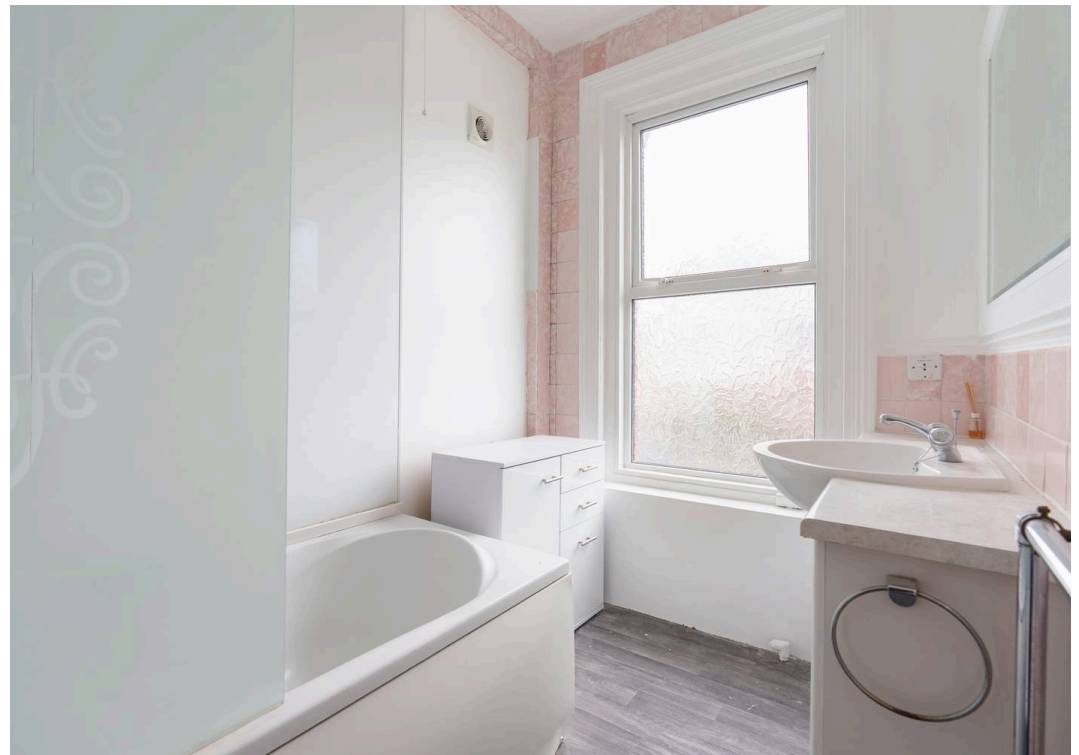
Hove

Spacious six bedroom, two bathroom Victorian flat with period features, modern kitchen, private garden, ample storage, and bright rooms. Ideal for families or sharers seeking comfort and style. Council Tax band: E

Tenure: Freehold

- Large six bedroom maisonette
- Private garden
- Own street entrance
- Double aspect living room
- Short walk to Hove station
- Quiet residential street
- No chain
- Freehold









## Winn Estates

Winn Estates, 201 Church Road, Hove - BN3 2AB

01273 044004

[liam@winn-estates.com](mailto:liam@winn-estates.com)

<http://winn-estates.com>