



Tildesley Road, SW15

£1,850 Per calendar month

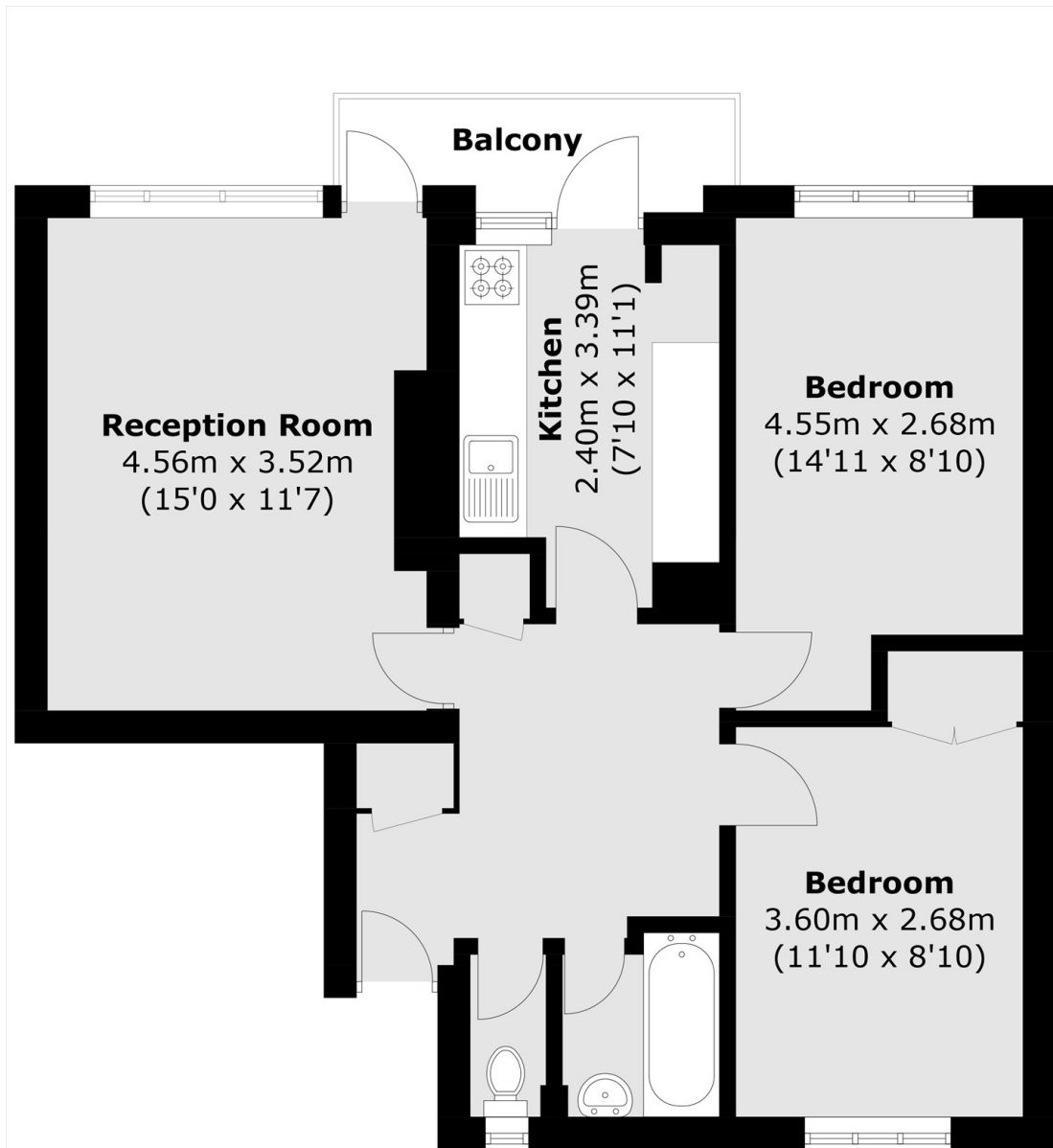
This furnished two double bedroom flat has a large reception room, separate kitchen as well as a private balcony. Perfect for young professionals, families and couples alike

Equidistant from Putney and Roehampton with easy access to Putney Heath, Tildesley Road is a firm favourite of young commuters and families.

Features

- Two Double Bedrooms
- Private Balcony
- Large Reception Room
- Separate Kitchen
- Excellent Location
- Furnished

Tildesley Road,
London, SW15



Total area (approx.): 62.2 sq. m (669.5 sq. ft)
Balcony area (approx.): 3.4 sq. m (36.6 sq. ft)