



**Connells**

Fulbridge Road  
Peterborough



# Fulbridge Road Peterborough PE1 3LA

for sale guide price  
**£270,000 - £300,000**



## Property Description

Guide Price £270,000 - £300,000

This beautifully renovated 3-bedroom semi-detached property offers a perfect blend of modern style and practical living. Located in a desirable area, the home boasts a bright and welcoming layout across two floors.

On the ground floor, you'll find a spacious lounge, an open-plan dining area and a contemporary kitchen, ideal for entertaining and family meals. A sleek shower room and hallway complete this level.

Upstairs, the first floor features three well-proportioned bedrooms, including a generous master bedroom, and a modern family bathroom. The property also benefits from an enclosed rear garden and driveway.

With its stylish finish, versatile spaces, and convenient location, this home is ready to move into and enjoy.

## Entrance Hall

Door to front, stairs to first floor, storage under stairs.

## Shower Room

Double shower cubicle, rainfall shower, spotlights, chrome heated towel, tiled flooring and walls, WC and wash hand basin.

## Lounge

10' 11" x 11' ( 3.33m x 3.35m )  
Bay window to front, carpet and radiator.

## Dining Room

11' x 10' 8" ( 3.35m x 3.25m )  
Open plan to kitchen and spotlights.

## Kitchen

16' 7" x 9' 1" ( 5.05m x 2.77m )  
Window and door to rear, high and low level storage with worktops over, laminate flooring, tiled splashbacks, spotlights, skylight, oven with 5 burner hob, cook hood, stainless steel sink/drainage, integrated fridge/freezer, space for washing machine/dishwasher and two radiators.

## First Floor

### Bedroom One

11' x 10' 7" ( 3.35m x 3.23m )  
Window to front, carpet and radiator.

### Bedroom Two

11' 3" x 10' 6" ( 3.43m x 3.20m )  
Window to rear and radiator.

## Bedroom Three

7' 9" x 6' 7" max ( 2.36m x 2.01m max )

Window to front, carpet and radiator.

## Bathroom

Window to rear, bath with shower over, wash hand basin, WC, tiled flooring and walls and spotlights.

## Outside

## Rear Garden

Enclosed, laid to lawn, patio area, gated side access.

## Front

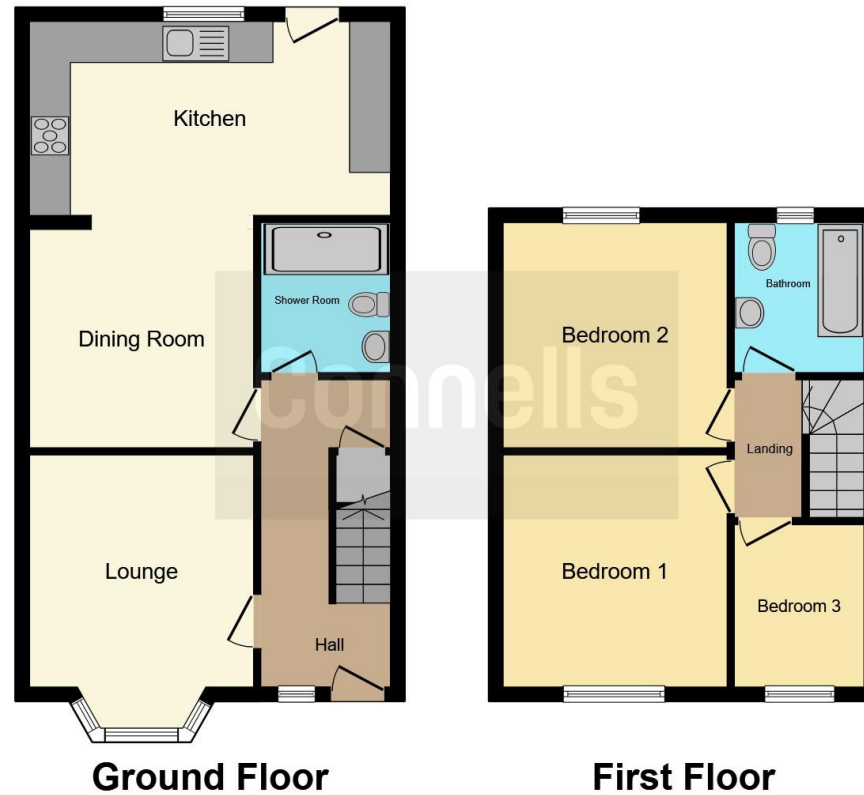
Concrete driveway for more than one vehicle.











This floor plan is for illustrative purposes only. It is not drawn to scale. Any measurements, floor areas (including any total floor area), openings and orientation are approximate. No details are guaranteed, they cannot be relied upon for any purpose and they do not form part of any agreement. No liability is taken for any error, omission or misstatement. A party must rely upon its own inspection(s). Powered by [www.focalagent.com](http://www.focalagent.com)

To view this property please contact Connells on

**T 01733 314 775**  
**E [peterborough@connells.co.uk](mailto:peterborough@connells.co.uk)**

14 Cowgate  
 PETERBOROUGH PE1 1NA

EPC Rating: C Council Tax  
 Band: A

Tenure: Freehold

**view this property online [connells.co.uk/Property/PBO312541](http://connells.co.uk/Property/PBO312541)**



1. MONEY LAUNDERING REGULATIONS Intending purchasers will be asked to produce identification documentation at a later stage and we would ask for your co-operation in order that there will be no delay in agreeing the sale. 2. These particulars do not constitute part or all of an offer or contract. 3. The measurements indicated are supplied for guidance only and as such must be considered incorrect. Potential buyers are advised to recheck measurements before committing to any expense. 4. We have not tested any apparatus, equipment, fixtures, fittings or services and it is in the buyers interest to check the working condition of any appliances.

Connells Residential is registered in England and Wales under company number 1489613, Registered Office is Cumbria House, 16-20 Hockliffe Street, Leighton Buzzard, Bedfordshire, LU7 1GN. VAT Registration Number is 500 2481 05.

**See all our properties at [www.connells.co.uk](http://www.connells.co.uk) | [www.rightmove.co.uk](http://www.rightmove.co.uk) | [www.zoopla.co.uk](http://www.zoopla.co.uk)**

Property Ref: PBO312541 - 0005