

**OVER 60?**

Secure this property  
for up to **59% less!**



**Guide Price**

**£250,000**

**Freehold**

3x  1x  1x 

Heath Villas, Colwell Lane, Freshwater, Isle  
of Wight, PO40

**Pittis**   
Helping you move forwards



## Main features

- Ideal development for First Time Buyers or Investors
- Within walking distance to both Freshwater village & Colwell Bay
- Internal open plan design
- Front and rear gardens full of colour
- Modernisation required throughout

## Accommodation

### GROUND FLOOR

Hall

Kitchen Diner: 14'8 x 9'8 (4.47m x 2.95m)

Utility: 4'1 x 2'3 (1.25m x 0.69m)

Lounge: 11'8 x 9'8 (3.56m x 2.95m)

### FIRST FLOOR

Landing

Bathroom: 8'4 x 7'2 (2.54m x 2.19m)

Bedroom 1: 13'0 x 11'1 (3.97m x 3.38m)

Bedroom 2: 11'6 x 11'2 (3.51m x 3.41m)

Bedroom 3: 12'8 x 7'2 (3.86m x 2.19m)

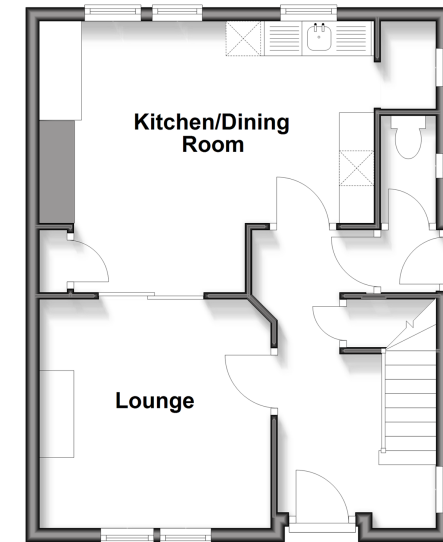
### OUTSIDE

Front Garden

Rear Garden

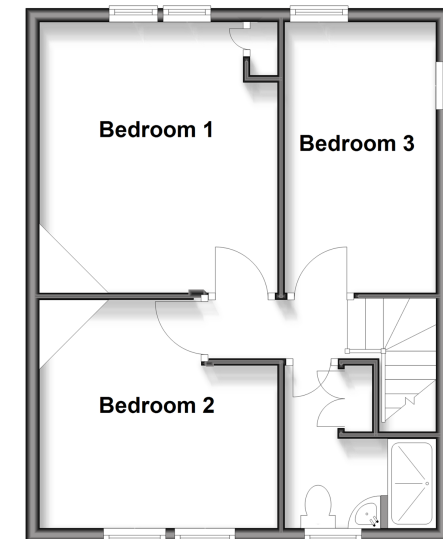
### Ground Floor

Approx. 41.5 sq. metres (446.6 sq. feet)



### First Floor

Approx. 41.8 sq. metres (450.2 sq. feet)



Call Freshwater - 01983 756222 ■ [pittis.co.uk](http://pittis.co.uk)

- If buying to let, the energy rating will need to be improved to at least 'E' rating before you can let the property
- Legal advice should be taken to verify fixtures/fittings, planning, alterations and/or lease details
- Appliances & services are untested, dimensions are approximate and floor plans are not to scale
- Through a Homewise Home For Life Plan people aged 60+ can secure this property for up to 59% less, by purchasing a Lifetime Lease



60218581/20260205/CG/CG