


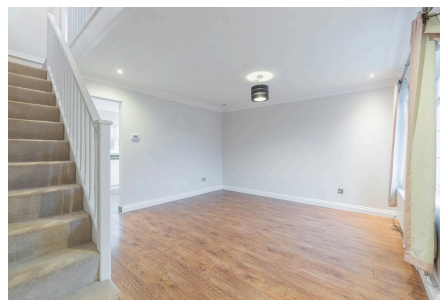


Westgrove Avenue, Shirley, Solihull, B90 4XN

Offers Over £390,000

 3  1  1



Well-Proportioned Three Bedroom Family Home with Kitchen Diner & Garage | Sought-After Shirley Location

Shirley Office:
Black and Golds Estate Agents
117 Stratford Road, Shirley, Solihull, B90 3ND

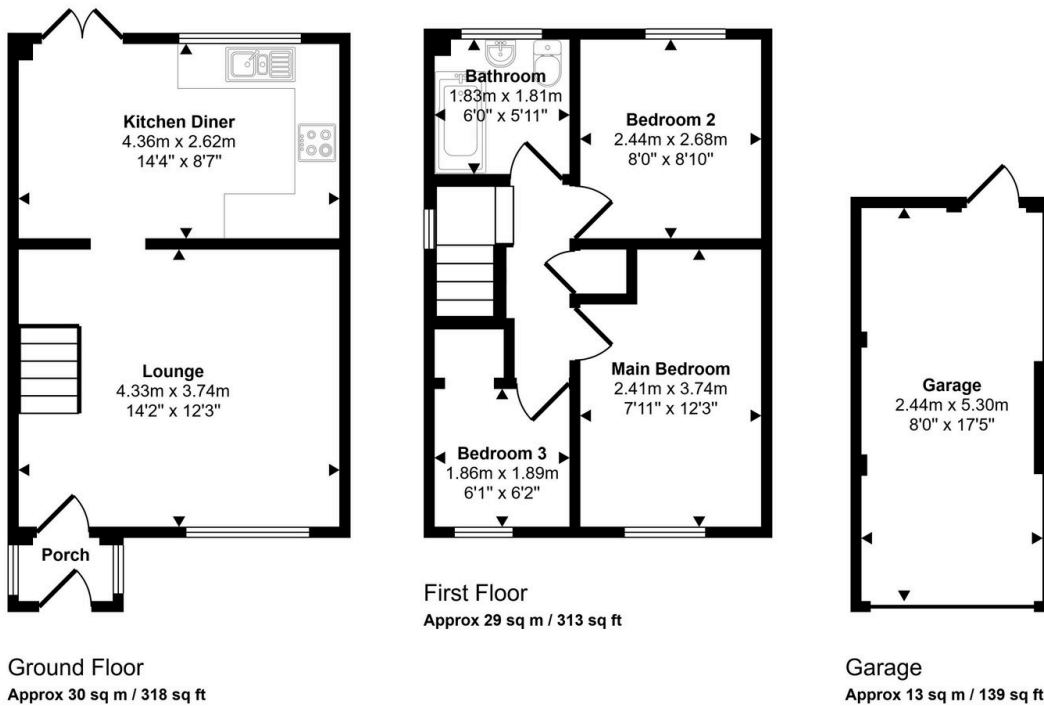
Wythall Office:
Black and Golds Mortgages
The Old Bakery House, Becketts Farm, Alcester Road, Wythall, B47 6AJ

Black and Golds Letting Agents Limited, Company Registration Number: 10198551. Black and Golds Estate Agents, Company Registration Number: 07939019. Registered Office: 117 Stratford Road, Solihull B90 3ND.
© 2023 Black and Golds Letting Agents Limited, Company Registration Number: 10398551. Black and Golds Estate Agents Copyright. All rights reserved. No content can be reproduced without our prior written consent.
While we as Estate Agents on behalf of the vendors endeavour to ensure the accuracy of property details provided and displayed, we have no liability for any omissions, errors or misstatements and we cannot verify that they are correct, in seeking order or fill for the purpose. Neither have we had sight of the legal documents to verify the Freehold or Leasehold status of any property. A Buyer is advised to obtain verification from their Solicitor and/or Surveyor. A Buyer must check the availability of any property and make an appointment to view before embarking on any journey to see a property. The Vendors have checked and approved these particulars. These particulars are intended to give a fair description, but their accuracy cannot be guaranteed, and are not to be taken as forming any part of a resulting contract. They are issued on the basis the property is still available and on the understanding that all regulations are conducted through the agents.

Key Features

- Well-proportioned three bedroom family home
- Generous kitchen diner ideal for family living
- Family bathroom
- Excellent potential to personalise or add value
- Close to shops, schools and amenities
- Spacious front lounge with plenty of natural light
- Three first floor bedrooms
- Separate garage providing storage or parking
- Quiet residential road in Shirley, Solihull
- Strong transport links via road and rail

Approx Gross Internal Area
72 sq m / 771 sq ft



This floorplan is only for illustrative purposes and is not to scale. Measurements of rooms, doors, windows, and any items are approximate and no responsibility is taken for any error, omission or mis-statement. Icons of items such as bathroom suites are representations only and may not look like the real items. Made with Made Snappy 360.