

# Church Road

## BISHOPSWORTH

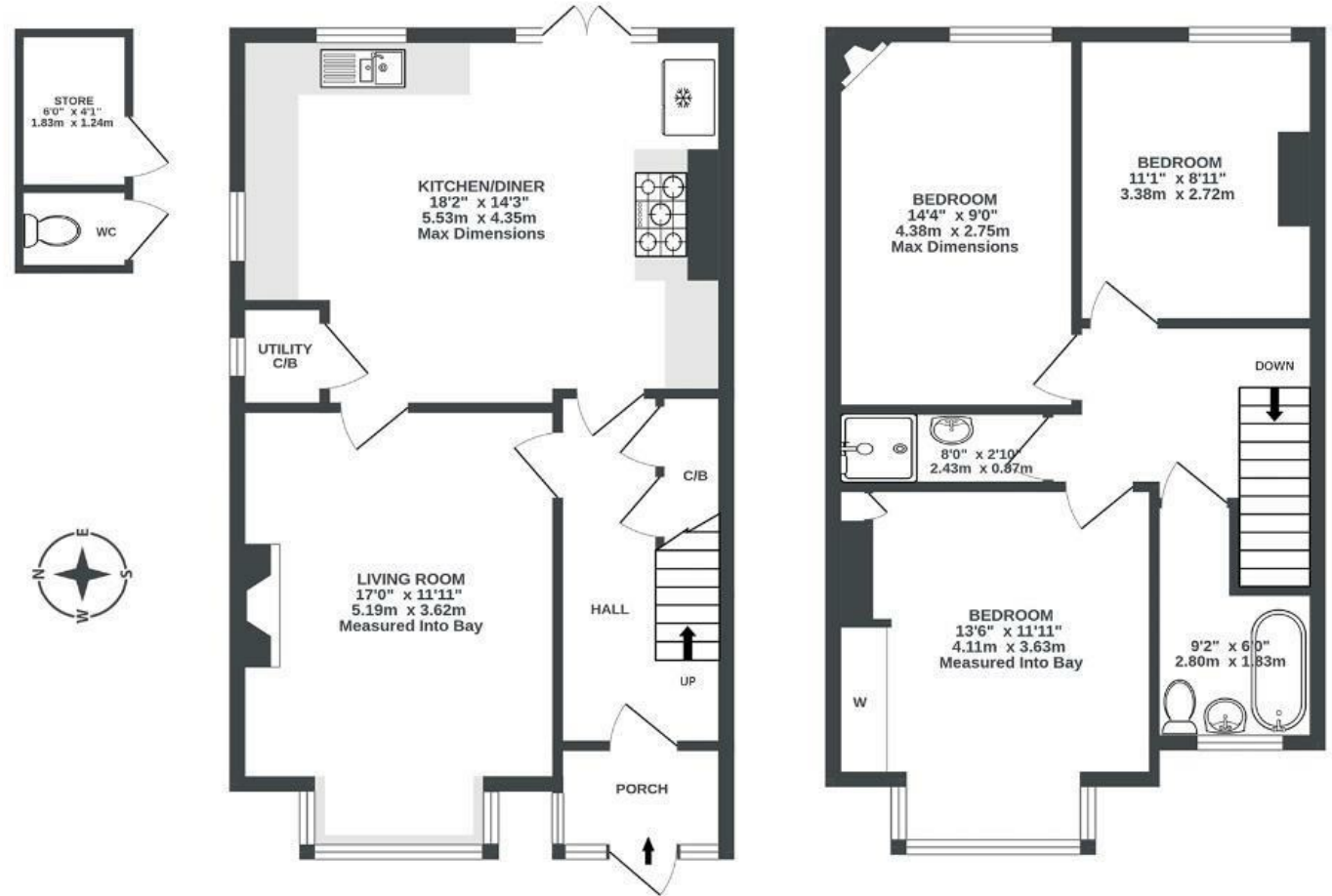
APPROXIMATE FLOOR AREA  
97.9 SQM / 1054 SQFT



OUTBUILDINGS  
(NOT INC IN TOTAL SQ.M)  
0 sq.m. (0.0 sq.ft.) approx.

GROUND FLOOR  
542 sq.m. (59.4 sq.m.) approx.

1ST FLOOR  
533 sq.ft. (67.5 sq.m.) approx.



Illustrations are for reference purposes only, measurements are approximate, not to scale.

Boardwalk

# Church Road

BISHOPSWORTH, BRISTOL

£  
£375,000

zzz  
3 Bedrooms

📍  
BS13 8JU

🦆  
2 Bathrooms

*"We love the tranquil mornings in the kitchen with the sun streaming in and the birds chirping, and then in the evenings moving to our front room to relax in the evening glow. The garden is maybe our favourite part of the house! We've spent many long summer evenings out there hosting friends and basking in the sunshine."*

