



COAST & COUNTRY LIVING

Finer Details



3-bedroom cottage
Sought-after Reepham location
Spacious lounge with fireplace
Kitchen opening to the courtyard
Low-maintenance walled garden
Utility room
Modern bathroom
Well-presented throughout
Walking distance to amenities
20 mins to Norwich

Set within the heart of one of Norfolk's most desirable market towns, Watchmakers Cottage is a beautifully presented three-bedroom home offering an exquisite balance of period charm and refined modern living.

From the moment you step inside, the property reveals a warm and inviting atmosphere, with interiors that have been thoughtfully styled and impeccably maintained throughout. The generous sitting room provides an elegant yet comfortable space, centred around a characterful fireplace—perfect for relaxed evenings and seasonal gatherings.







To the rear, the kitchen has been designed with both practicality and style in mind, opening through double doors onto a delightful walled courtyard garden.

This private outdoor sanctuary has been carefully landscaped for ease of maintenance, with considered planting that creates a tranquil and intimate setting—ideal for alfresco dining or quiet retreat.





DRINK "Juvo" LARGE 3 D. BOTTLE
THE REJUVENATOR & PLEASING FRUIT TONIC





Upstairs, three well-proportioned bedrooms are arranged around a spacious and light-filled landing, offering comfortable and versatile accommodation suited to a variety of lifestyles.











Perfectly positioned, the property enjoys easy walking access to Reepham's charming array of independent shops, cafés, traditional pubs, and restaurants. Despite its peaceful setting, the property remains well connected, with Norwich just 20 minutes away and the spectacular Norfolk coastline within easy reach.

Reepham is an exceptionally picturesque and historic market town, set amidst gently rolling countryside between the Wensum and Bure Valleys. Rich in heritage, the town's origins date back to shortly after the Norman Conquest, and today it is celebrated for its elegant 18th-century architecture, with period homes lining its attractive streets, lanes, and historic marketplace.

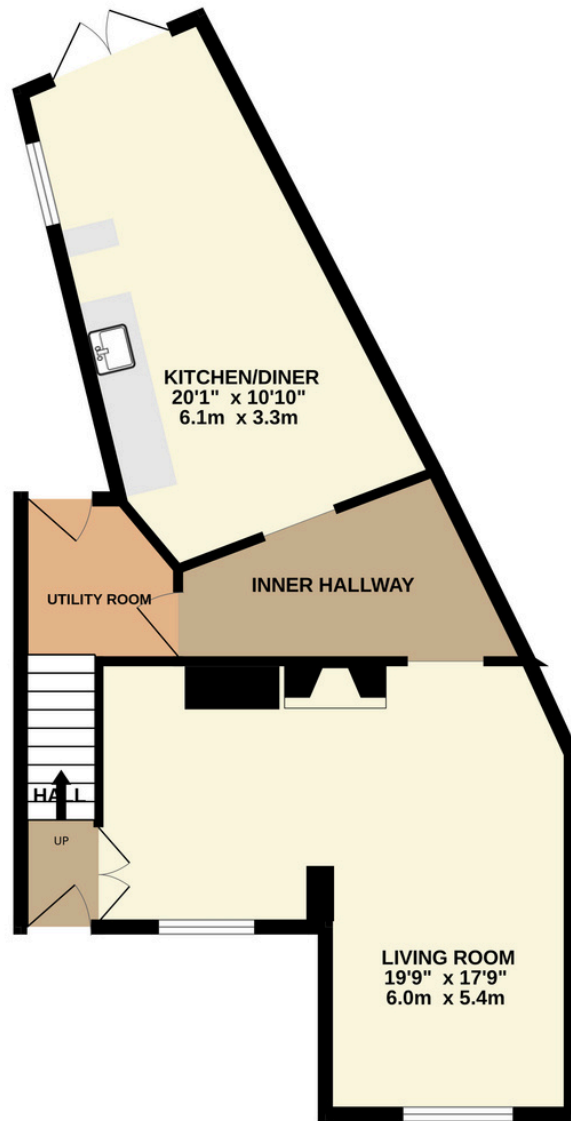
At its centre lies the charming market square, granted its charter in 1277 by King Edward I. Now a designated conservation area, it remains a thriving hub of community life, hosting a traditional weekly market alongside regular antiques fairs.







GROUND FLOOR



1ST FLOOR

