



HIVE

7A ELMSDOWN COURT  
SOUTHAMPTON ROAD  
RINGWOOD  
BH24 1JE



HIVE

“  
*Agent's introduction*

Charming one-bedroom maisonette in the heart of Ringwood Town Centre, recently redecorated with new carpets and flooring. Features a versatile entrance hallway, spacious living room, generous kitchen with garden views, bedroom with wardrobe, and a bathroom with shower over bath. Includes communal garden and private storage—perfectly located within walking distance of shops.





HIVE



  
HIVE

## *Property highlights*

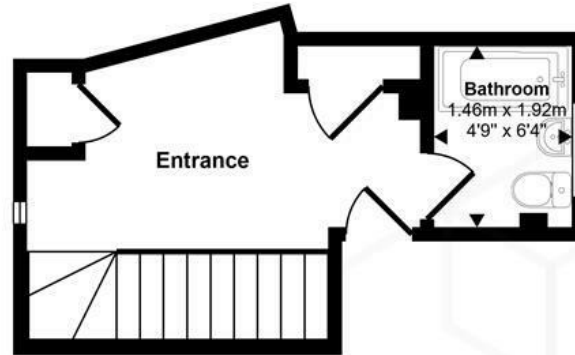
- Town centre location in Ringwood
- One-bedroom maisonette with private entrance
- Versatile entrance hallway ideal for home office
- Pleasant living room
- Generous kitchen with views over communal gardens
- Perfect for a first time buyer
- No chain
- Low annual maintenance costs
- Bathroom with shower over bath
- New carpets, flooring and has been redecorated



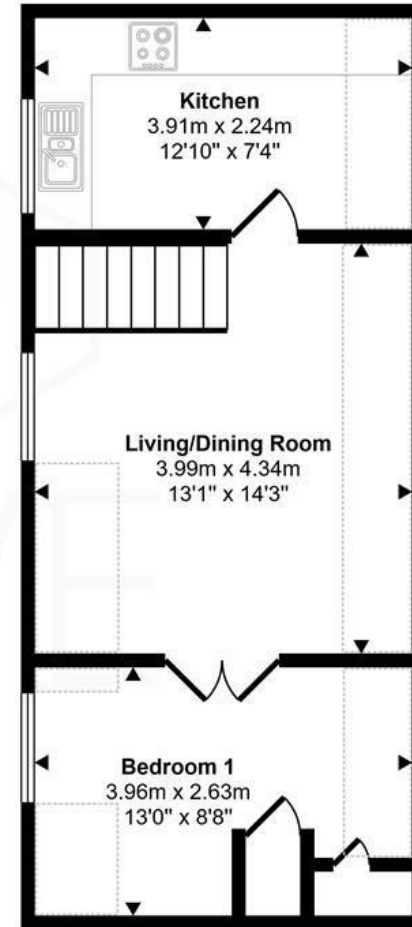
HIVE

# Floor plan and EPC

Approx Gross Internal Area  
52 sq m / 563 sq ft



Ground Floor  
Approx 15 sq m / 159 sq ft



First Floor  
Approx 38 sq m / 404 sq ft

Denotes head height below 1.5m

This floorplan is only for illustrative purposes and is not to scale. Measurements of rooms, doors, windows, and any items are approximate and no responsibility is taken for any error, omission or mis-statement. Icons of items such as bathroom suites are representations only and may not look like the real items. Made with Made Snappy 360.

## Energy Efficiency Rating

	Current	Potential
<i>Very energy efficient - lower running costs</i>		
(92 plus) <b>A</b>		
(81-91) <b>B</b>		
(69-80) <b>C</b>		
(55-68) <b>D</b>		
(39-54) <b>E</b>	51	58
(21-38) <b>F</b>		
(1-20) <b>G</b>		
<i>Not energy efficient - higher running costs</i>		
<b>England &amp; Wales</b>	EU Directive 2002/91/EC	



  
HIVE



HIVE & Partners Unit F1, Arena Business Centre 9 Nimrod Way, Ferndown, BH21 7UH  
01202 122 002 | [www.hiveandpartners.co.uk](http://www.hiveandpartners.co.uk) | [sales@hiveandpartners.co.uk](mailto:sales@hiveandpartners.co.uk)