



CHARLBURY ROAD

Oxford



IMPRESSIVE DETACHED HOME BUILT BY CHARLES CHURCH

On one of Oxford's most sought after side roads.

			EPC
5-6	3	3	C

Local Authority: Oxford City Council

Council Tax band: G

Tenure: Freehold



THE PROPERTY

Impressive detached home built by Charles Church offering substantial and beautifully proportioned accommodation, positioned on one of North Oxford's most sought after residential side roads. A spectacular open-plan kitchen/dining space forms the heart of the home. The superb triple aspect reception room with feature fireplace provides an elegant entertaining space, complemented by a separate study and an additional sitting room. The sitting room flows seamlessly into a double glazed conservatory, enjoying delightful views across the rear garden. The kitchen/dining room is particularly impressive, benefitting from dual aspects and an abundance of natural light from a striking ceiling lantern. A central island anchors the space, making it perfectly suited to both everyday family life and entertaining. A separate utility/laundry room completes the ground floor.





MORE ABOUT THE PROPERTY

On the first floor, the principal bedroom suite extends across the full depth of the house and includes a dressing area and en suite bathroom. Three further double bedrooms and a family bathroom are also arranged on this level. From the landing, stairs rise to the second floor where a versatile studio space provides a bedroom area, kitchenette, and study space. This flexible accommodation is ideal for an au pair, nanny or teenager, or could be reconfigured to create additional bedrooms if required.

Outside, the property benefits from an attached garage and generous driveway parking. Gated side access leads to a mature and private rear garden, predominantly laid to lawn and complemented by a curved patio terrace and attractive water feature.





LOCATION

Charlbury Road is a prime residential road in the heart of the North Oxford Victorian Conservation Area. It is well positioned for Oxford's excellent range of schools with the Dragon, Wychwood and Oxford High School within walking distance and St Edward's, Magdalen, Headington Girls School, and Summer Fields within easy reach. It is close to University Parks for lovely walks along the river.

There is good access to Summertown's day-to-day shopping facilities, including Marks & Spencer Food Hall, two other supermarkets, artisan bakers and coffee shops, bars and restaurants and the popular Nuffield Health and Racquets Club. There are also dentist and doctor surgeries. There is a farmers market every two weeks in North Parade and in Jericho, there are two small supermarkets, a number of individual shops, the Phoenix Picturehouse cinema and a number of bars and restaurants.





DISTANCES

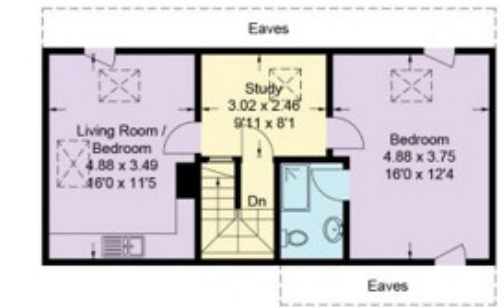
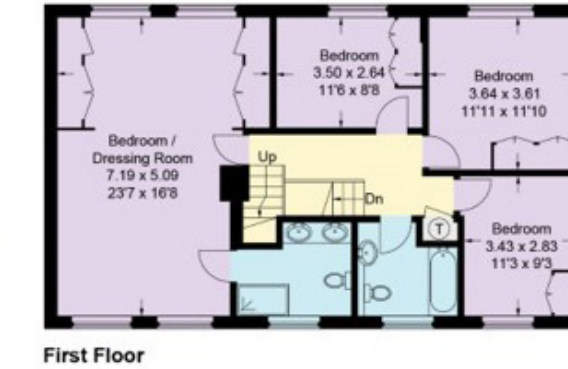
The Woodstock and Banbury roads join directly to the Oxford ring road connecting to the A40 and M40 to London. The Oxford rail station has regular services directly to London Paddington (approximately 53 minutes), and Oxford Parkway station has services to London Marylebone (approximately 62 minutes).





39 Charlbury Road

Approximate Gross Internal Area
 Ground Floor = 147.2 sq m / 1,584 sq ft
 First Floor = 89.4 sq m / 962 sq ft
 Second Floor = 51.7 sq m / 556 sq ft
 Garage = 17.2 sq m / 185 sq ft
 Total = 305.5 sq m / 3,287 sq ft
 (Excluding Eaves)



This plan is for layout guidance only. Not drawn to scale unless stated. Windows and door openings are approximate. Whilst every care is taken in the preparation of this plan, please check all dimensions, shapes and compass bearings before making any decisions reliant upon them. (ID767266)

We would be delighted
to tell you more.

William Kirkland

01865 790077

William.Kirkland@knightfrank.com

Knight Frank Oxford

274 Banbury Road

Oxford, OX2 7DY

[knightfrank.co.uk](https://www.knightfrank.co.uk)

Your partners in property

1. Particulars: These particulars are not an offer or contract, nor part of one. You should not rely on statements given by Knight Frank in the particulars, by word of mouth or in writing ("information") as being factually accurate about the property, its condition or its value. Neither Knight Frank nor any joint agent has any authority to make any representations about the property, and accordingly any information given is entirely without responsibility on the part of Knight Frank. 2. Material Information: Please note that the material information is provided to Knight Frank by third parties and is provided here as a guide only. While Knight Frank has taken steps to verify this information, we advise you to confirm the details of any such material information prior to any offer being submitted. If we are informed of changes to this information by the seller or another third party, we will use reasonable endeavours to update this as soon as practical. 3. Photos, Videos etc: The photographs, property videos and virtual viewings etc. show only certain parts of the property as they appeared at the time they were taken. Areas, measurements and distances given are approximate only. 4. Regulations etc: Any reference to alterations to, or use of, any part of the property does not mean that any necessary planning, building regulations or other consent has been obtained. A buyer must find out by inspection or in other ways that these matters have been properly dealt with and that all information is correct. 5. Fixtures and fittings: A list of the fitted carpets, curtains, light fittings and other items fixed to the property which are included in the sale (or may be available by separate negotiation) will be provided by the Seller's Solicitors. 6. VAT: The VAT position relating to the property may change without notice. 7. To find out how we process Personal Data, please refer to our Group Privacy Statement and other notices at <https://www.knightfrank.com/legals/privacy-statement>.

Particulars dated May 2024. Photographs and videos dated May 2024. All information is correct at the time of going to print. Knight Frank is the trading name of Knight Frank LLP. Knight Frank LLP is a limited liability partnership registered in England and Wales with registered number OC305934. Our registered office is at 55 Baker Street, London W1U 8AN. We use the term 'partner' to refer to a member of Knight Frank LLP, or an employee or consultant. A list of members names of Knight Frank LLP may be inspected at our registered office. If you do not want us to contact you further about our services then please contact us by either calling 020 3544 0692, email to marketing.help@knightfrank.com or post to our UK Residential Marketing Manager at our registered office (above) providing your name and address.