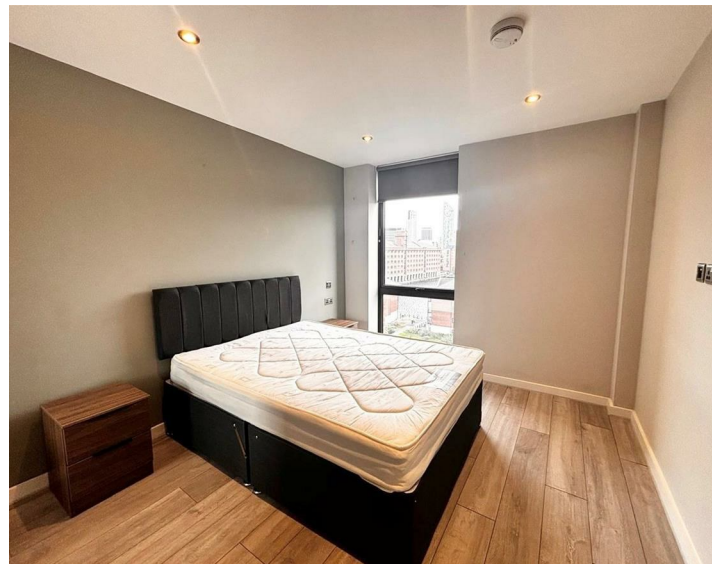




Apt 205, Quay Central 9 Jesse Hartley Way, Liverpool, L3 0AB
£1,000 Per Month

www.
cityresidential
.co.uk



About the Property

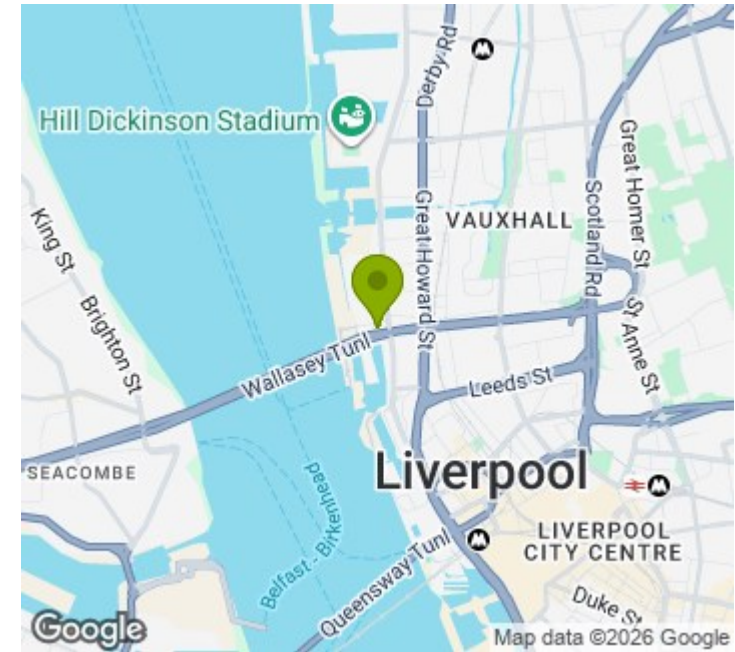
AVAILABLE NOW! A well presented two-bedroom, two-bathroom apartment located in the sought-after Quay Central development at 9 Jesse Hartley Way.

Situated on the second floor, this modern property is offered fully furnished to a high standard, providing a comfortable and stylish living space ideal for professionals or sharers.

The apartment features a bright open-plan living and kitchen area, two generously sized bedrooms, including a primary with en-suite, and a contemporary main bathroom. Residents benefit from a prime waterfront location with excellent access to Liverpool city centre, local amenities, and transport links.

Please note: No parking is available with this property. Call us now to arrange a viewing on 0151 231 6100.

- Immediate Move In
- Fully Furnished
- Two Bedroom, Two Bathroom
- No Parking
- EPC - B
- Council Tax - C
- Deposit - £1153



Energy Efficiency Rating

	Current	Potential
Very energy efficient - lower running costs		
(92 plus) A		
(81-91) B	82	82
(69-80) C		
(55-68) D		
(39-54) E		
(21-38) F		
(1-20) G		
Not energy efficient - higher running costs		
England & Wales	EU Directive 2002/91/EC	



City Residential

81/87 Victoria Street, The Old Haymarket, Liverpool L1 6DG

T: 0151 231 6100 F: 0151 231 6105

E: sales@cityresidential.co.uk



WWW.
cityresidential
.co.uk