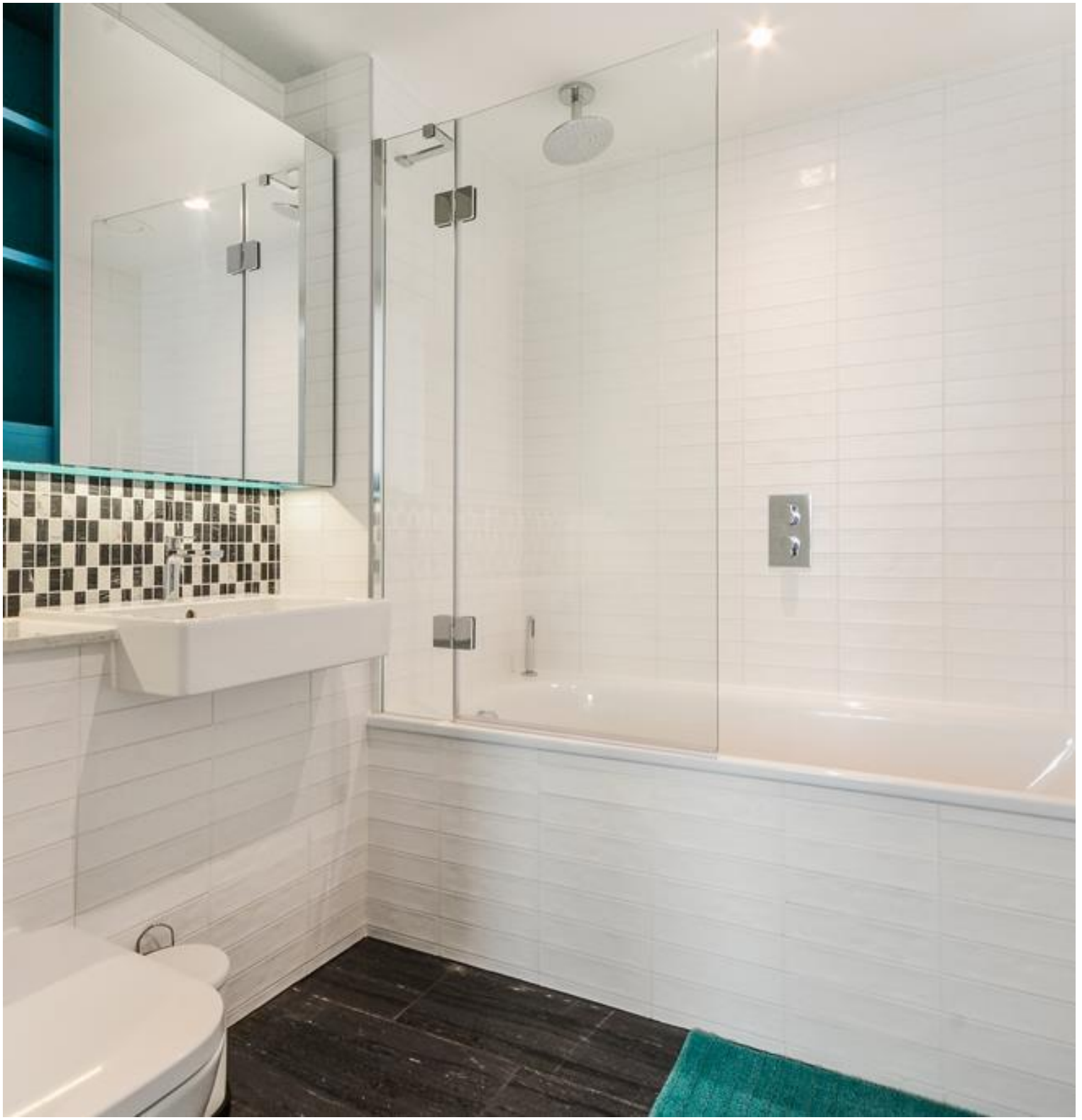




Southwark Bridge Road, London SE1
Price £630 per week - Furnished







Description

A sought after 1 bedroom apartment in Elephant & Castle's latest tower, Two Fifty One (251).

This luxury 1 bedroom apartment is offered fully furnished, offering approximately 520 sq ft of living space and is situated on the 18th floor. The property comprises 1 double bedroom with large fitted wardrobes, large open plan reception with fully fitted kitchen, contemporary bathroom, wood flooring and good storage space.

Two Fifty One (251) is located in the heart of Southwark, zone 1 and well situated for the City of London with Elephant & Castle station just 0.1 miles away. Residents also benefit from 24 hour concierge, on site gymnasium, private cinema and private club / dining areas.

Council tax band: D. Rent is payable on a monthly basis, and you may be required to pay more than a month's rent in advance for tenancies with annual rents exceeding £100,000. You will be required to pay a 1 week holding deposit following a successful offer. Tenancies with annual rents up to £50,000 will require a 5 weeks' security deposit, while those exceeding this threshold will require a 6 weeks' deposit. Utility bills, council tax, telephone line and broadband are not included in the rent. As well as paying the rent, you may also be required to make some additional permitted payments. If your tenancy does not qualify as an APT, additional fees may apply. Please visit jll.co.uk/fees for details of fees that may be payable when renting a property. To check broadband and mobile phone coverage please visit Ofcom here ofcom.org.uk/phones-telecoms-and-internet/advice-for-consumers/advice/ofcom-checker

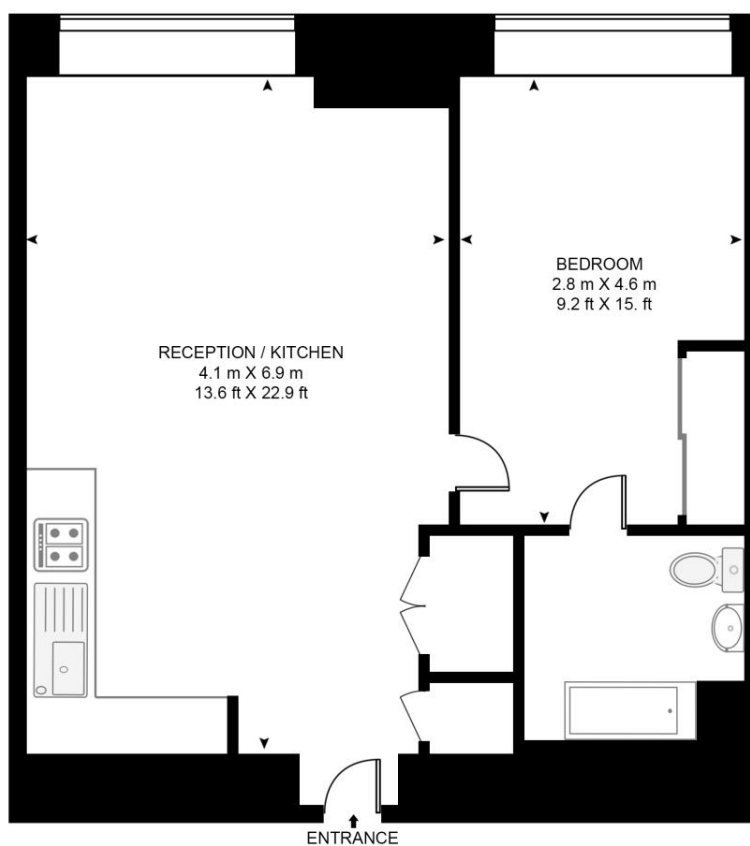
- 1 Bedroom
- 1 Bathroom
- 18th floor
- Wood flooring
- On-site leisure facilities
- 24 hour concierge
- 0.1 miles from Elephant & Castle Station
- Approx. 523 sq ft (48.6 sq m)
- Furnished
- EPC: B

Floorplan

523 sq ft | 49 sq m

SOUTHWARK BRIDGE ROAD

APPROXIMATE GROSS INTERNAL FLOOR AREA 523 SQ.FT (48.6 SQ.M)



HDVA

This floor plan has been defined by the RICS Code of Measurement. This floor plan and all others are for approximate representative purposes only and upon usage is agreed to as such by the client.

WWW: hdvirtualart.com | TEL: 0203.974.1567 | EMAIL: info@hdvirtualart.com

City
25 Walbrook The Walbrook
Building,
London EC4N 8AF
+4420 7337 4000

Urban living, your way.

jll.co.uk/residential

© 2019 Jones Lang LaSalle IP, Inc. All rights reserved. All information contained herein is from sources deemed reliable; however, no representation or warranty is made to the accuracy thereof.

