



Woburn Place, WC1H

£325,000

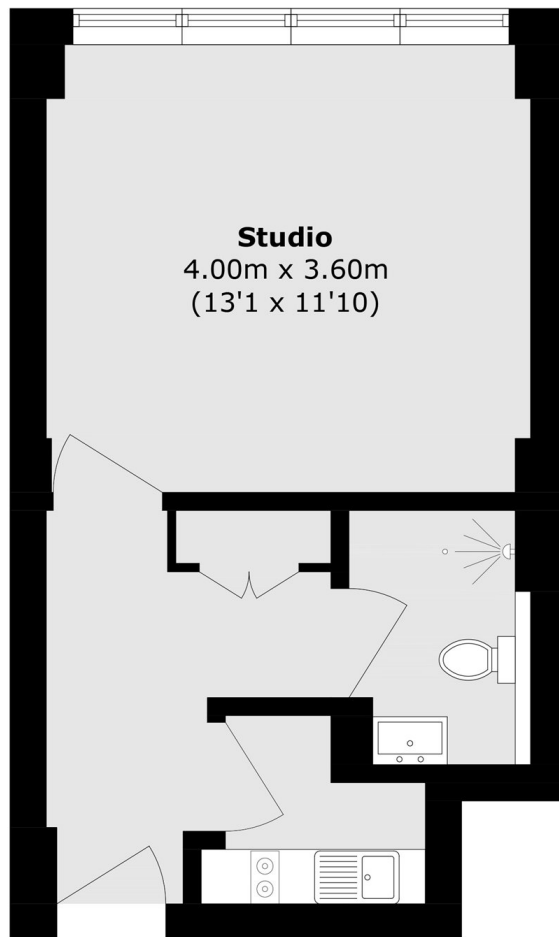
OIEO Set on the seventh floor and enjoying great angled views of Russell Square, this bright, westerly facing, secondary-glazed studio flat is ideal for those seeking a central London home or pied-à-terre. The development benefits from the heating and hot water being included in the service charge, concierge and lift access.

Woburn Place sits in the heart of Bloomsbury, just moments from the Brunswick Centre and the world-famous British Museum, with Covent Garden's shops, theatres, and restaurants within easy reach. Russell Square and King's Cross stations provide excellent transport links across London.

Features

- 24 Hour Concierge
- No Onward Chain
- Share Of The Freehold
- Lift Access
- Modern Condition
- 7th Floor

Woburn Place, London, WC1H



Total area (approx.): 27.3 sq. m (293.8 sq. ft)