



St. Marks Place

BERKSHIRE • GUIDE PRICE £850,000

This architect-designed residence showcases a sleek aesthetic, achieved through thoughtful modeling, high-end specifications, innovative lighting, and meticulous attention to detail, resulting in a minimalist yet inviting atmosphere.

- Freehold
- Off-street parking
- Expertly refurbished
- 69 foot garden
- Central Windsor location

DESCRIPTION

The current owners have consistently improved the property over the years with a discerning architectural vision, resulting in an immaculate renovation. They have expanded the kitchen, making it significantly brighter than in its previous configuration.

Upon entering through the front door, you are welcomed into the living room, which features a charming fireplace and backlit lighting. The dining area is equipped with concealed shelving, providing ample storage space. The galley-style kitchen opens up to a stunning glass cube, with bi-fold doors framing the garden and a glass ceiling that floods the area with natural light.

On the first floor, there is a bedroom that overlooks the front with double-glazed sash windows and built-in storage. The second bedroom includes a generously sized set of free-standing wardrobes, which the owner is willing to leave behind. The spacious family bathroom is complete with a large glass shower, a freestanding bathtub, a sink, and a full mirrored wall that includes concealed storage behind it. The lower ground floor currently serves as a yoga room but could easily be used as an office or guest bedroom.







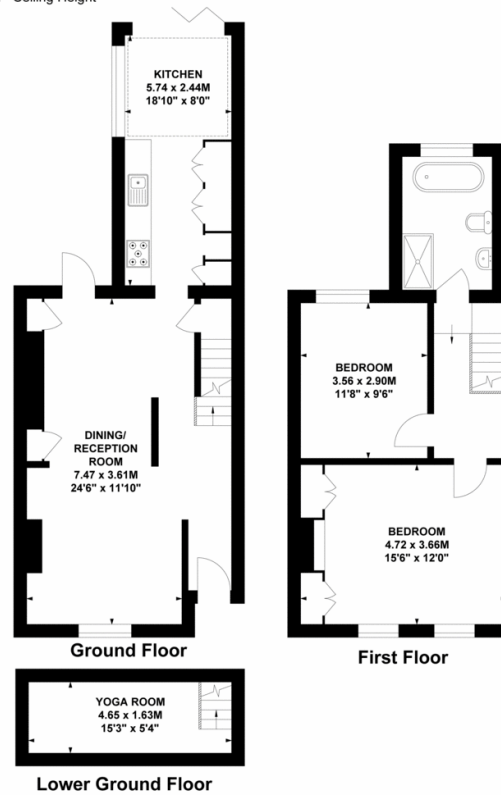


St Marks Place, SL4

Approximate gross internal area
98.90 sq m / 1065 sq ft

HardingGreen

Key :
CH - Ceiling Height



Not to scale, for guidance only and must not be relied upon as a statement of fact.
All measurements and areas are approximate only



Robbie Gittins

Partner

0203 879 0723

robbie.gittins@hardinggreen.com

Important Notice. We would like to inform prospective purchasers that these sales particulars have been prepared as a general guide only. A detailed survey has not been carried out, nor the services, appliances and fittings tested. Room sizes should not be relied upon for furnishing purposes and are approximate. If floor plans are included, they are for guidance only and illustration purposes only and may not be to scale. If there are any important matters likely to affect your decision to buy, please contact us before viewing the property.



FIND OUT MORE