



Laird Court, Bagshot

Offers in excess of **£155,000**



Laird Court, Bagshot

One bedroom first floor apartment with residents parking situated within walking distance of the town centre with its' variety of shops and restaurants, and within an easy drive of the M3. No onward chain.

FEATURES

Ideal first time buy or buy to let
Built by Charles Church
Double glazing
Electric heating
Walking distance to Bagshot High Street with variety of shops & restaurants
Easy access to junction 3 of the M3

ACCOMODATION

Living room open plan to kitchen
Bedroom
Bathroom

OUTSIDE

Residents parking
Communal garden area

COUNCIL TAX

Surrey Heath Borough Council - Band B

EPC RATING

D

LEASE INFORMATION

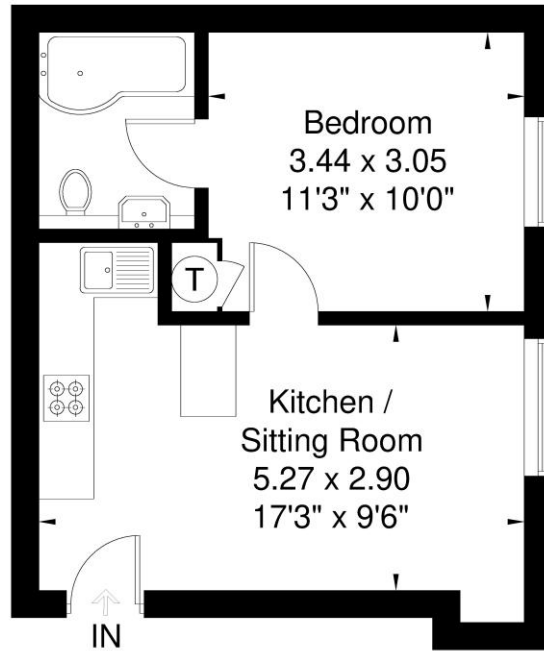
999 year lease granted in 1986
(currently 959 years remaining)
Service charge currently £80.56 per month
No ground rent payable





Laird Court

Approximate Gross Internal Area = 32.6 sq m / 350 sq ft



First Floor

Illustration for identification purposes only,
measurements are approximate, not to scale.

Disclaimer: We wish to inform prospective purchasers that we have prepared these sales particulars as a general guide. We have not carried out a detailed survey, nor tested the services, appliances and specific fittings. Room sizes are approximate and rounded; they are taken between internal wall surfaces and therefore include cupboards / shelves, etc. Tenant fees apply, see our notification of tenant costs.

Postcode for sat nav: GU19 5QN



The Old Dairy, 7 Updown Hill, Windlesham, Surrey GU20 6AF
enquiries@newtonrowe.co.uk | 01276 986900