



Beards Hill, TW12

£325,000

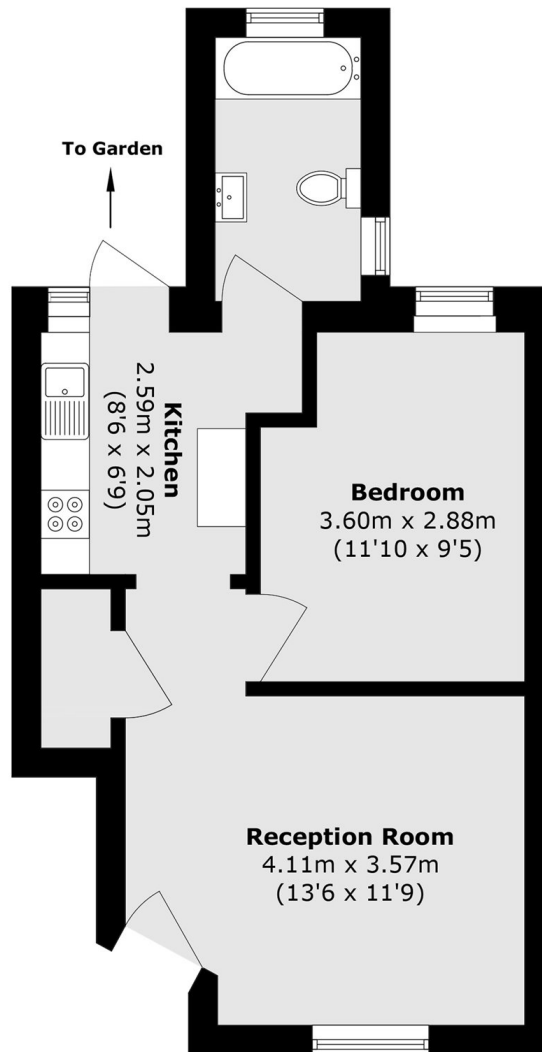
A pretty Victorian garden flat - a one bedroom, ground floor, maisonette that would be perfectly suited to a downsizer, investor or first time buyer.

Found just off Oldfield Road, Beards Hill is an ideal location - minutes walk to the local shops, the train station, and Hampton Green at the heart of the village, with Bushy Park also nearby.

Features

- One Bedroom
- Ground Floor Maisonette
- Victorian
- Private Garden
- Central Location
- Low Service Charge

Beards Hill, Hampton, TW12



Total area (approx.): 37.4 sq. m (402.5 sq. ft)