



 3

 2

 3

 C

DavidJames
the estate agent

Eccles Way, Nottingham, NG3 3DG

£1,350 Per Month

About This Property

This three bedroom, three storey townhouse is beautifully presented throughout with modern and thoughtfully designed décor, offering stylish and versatile accommodation ideal for contemporary living. The property is entered on the ground floor into a spacious and flexible dining room which could also be utilised as a family room, creating a welcoming and practical space. This leads through to a modern fitted kitchen complete with integrated oven, hob, dishwasher and washing machine, providing a sleek and functional area. On the first floor, the property boasts a bright and spacious living room featuring a fireplace, creating a comfortable and relaxing environment, along with bedroom one which benefits from its own ensuite shower room fitted with a walk-in two way rainfall shower. The second floor comprises bedroom two which also enjoys the convenience of an ensuite shower room, a further third bedroom, and a modern family bathroom fitted with a three piece suite. Externally, the property offers a low maintenance rear garden with a small lawned area, ideal for enjoying outdoor space, while to the front there is a driveway providing off-road parking for two vehicles. Combining stylish presentation with flexible living space across three floors, this is an impressive home in a desirable location.

TENANCY DETAILS

Available From: NOW

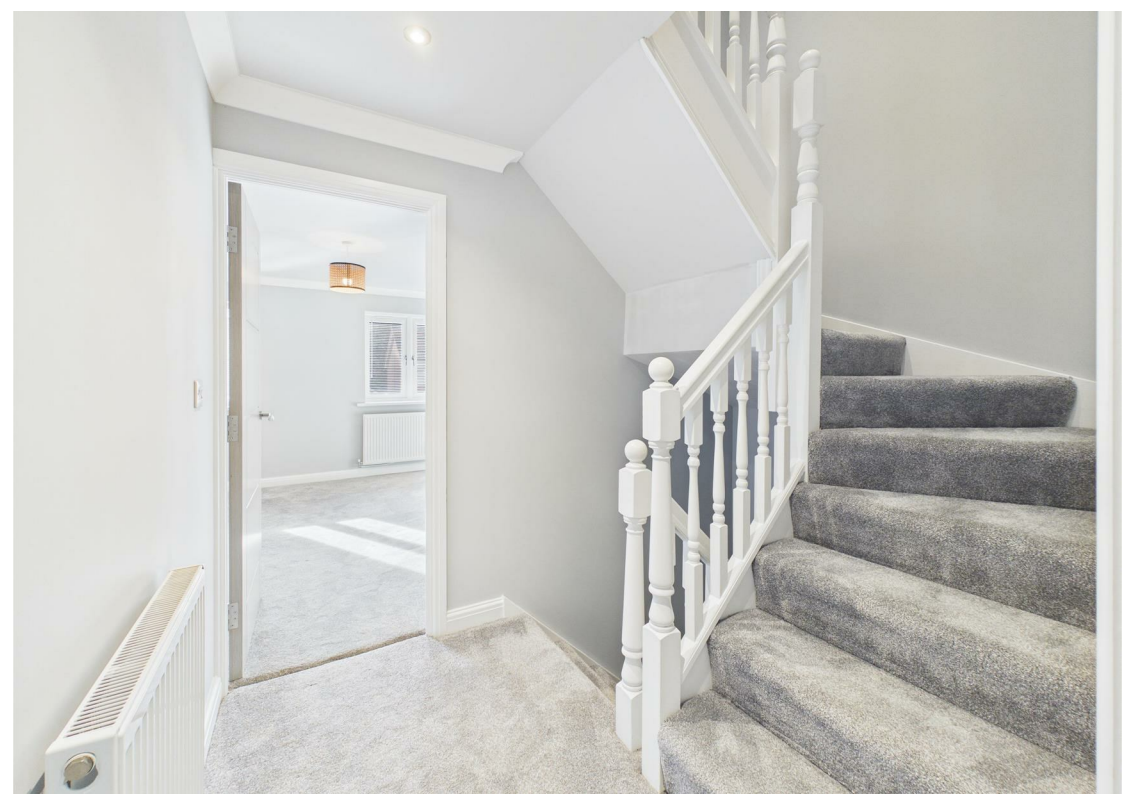
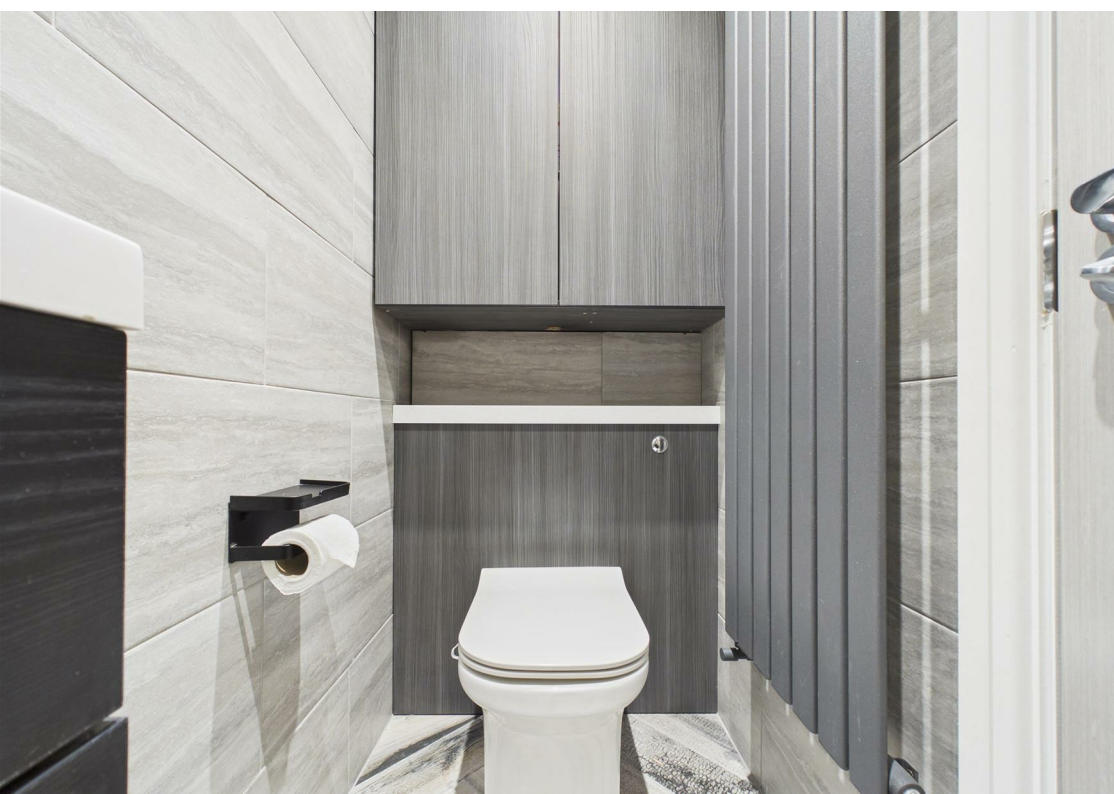
Furnishing: Unfurnished

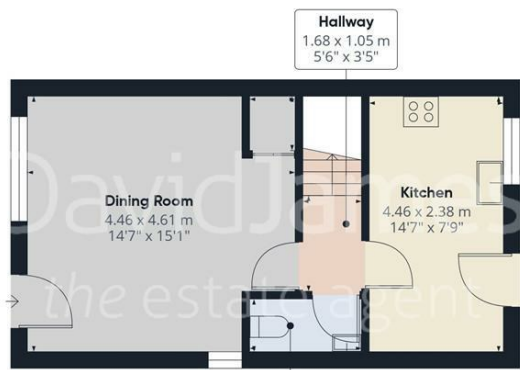
EPC Rating: C

Council Band: B

- Three storey townhouse
- Modern and well thought out décor throughout
- Spacious and versatile ground floor dining/family room
- Contemporary kitchen with integrated oven, hob, dishwasher and washing machine
- Bright first floor living room with fireplace
- Bedroom one with ensuite and walk-in two way rainfall shower
- Bedroom two with ensuite shower room
- Third bedroom and family bathroom with three piece suite
- Full double glazing and gas central heating
- Low maintenance rear garden with lawn area







Floor 0



Floor 1



Floor 2



Approximate total area⁽¹⁾
101.4 m²
1090 ft²

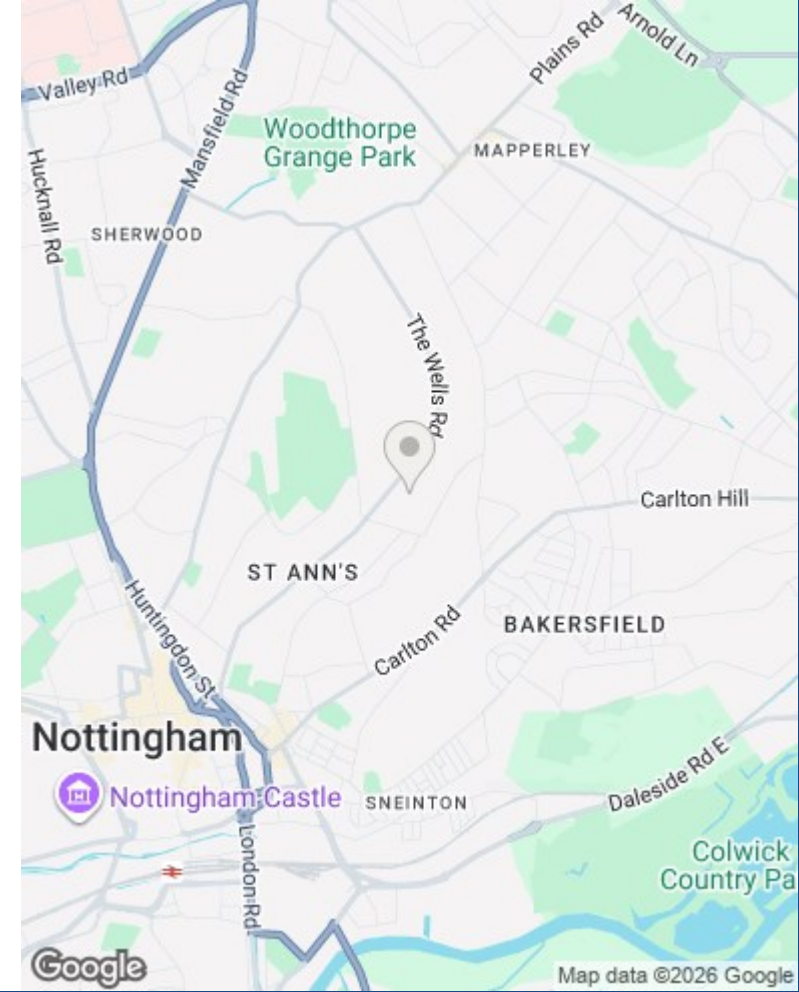
Reduced headroom
0.9 m²
10 ft²

(1) Excluding balconies and terraces

Reduced headroom
..... Below 1.5 m/5 ft

Calculations reference the RICS IPMS 3C standard. Measurements are approximate and not to scale. This floor plan is intended for illustration only.

GIRAFFE360



These particulars are produced in good faith, are set out as a general guide only and do not constitute any part of a contract. No person in the employment of David James Estate Agents Ltd has any authority to make any representation whatsoever in relation to the property. All services, together with electrical fittings or fitted appliances have NOT been tested. All the measurements given in the details are approximate. Floor plans are for illustrative purposes only and are not drawn to scale. The position and size of doors, windows, appliances and other features are approximate only. The photographs of this property have been taken with a 10mm wide-angle lens. No responsibility can be accepted for any loss or expense incurred in viewing. If you have a property to sell you may wish to take advantage of our free valuation service. David James Estate Agents have established professional relationships with third-party suppliers for the provision of services to Clients. As remuneration for this professional relationship, the agent receives referral commission from the third-party company. David James Estate Agents receives the following commission from each third party supplier on a per referral basis: W A Barnes Ltd: £60 including VAT. All Moves UK Ltd: 18% including VAT of the invoice total (£107 including VAT average). MoveWithUs Limited: £188 including VAT (average).

Council Tax Band: B
Nottingham City Council

DavidJames
the estate agent

David James Estate Agents
45b Plains Road, Mapperley, Nottingham, NG3 5JU
t: 0115 962 4213 e: lettings@david-james.com

