



# turners



## Hillsborough Terrace

Ilfracombe, EX34 9NR

**Price Guide £195,000**





# 9 Hillsborough Terrace

Ilfracombe, EX34 9NR

**Asking Price: Price Guide £195,000**

- Immaculately presented ground floor apartment
  - Views of Ilfracombe Harbour
    - Open plan living
  - Short walk to Ilfracombe Harbour
- Allocated off-road parking
- Low-maintenance rear garden
- Short walk to local amenities
- Gas central heating throughout

## The Property

This immaculately presented ground floor flat offers stylish coastal living with stunning views over Ilfracombe Harbour. The heart of the home is a wonderfully spacious open-plan living area and kitchen, designed to maximise light and space, with plenty of room for freestanding furniture. The modern fitted kitchen features sleek finishes and integrated appliances, perfect for both everyday living and entertaining.

There are two generously sized double bedrooms, both well-proportioned and tastefully decorated, along with a contemporary three-piece shower room finished to a high standard. To the rear, a private stone-paved patio provides a low-maintenance outdoor space, ideal for al fresco dining or relaxing in the fresh sea air.

The property also benefits from an allocated parking space and is currently operating as a successful holiday let, offering both lifestyle and investment potential in one of Ilfracombe's most desirable coastal locations.

## Location

Ilfracombe town offers a variety of independent shops, art galleries, restaurants and bars. The

picturesque seafront and harbour area is home to artist Damien Hirst's 'Verity' statue at the harbour entrance. In addition is the exciting new water sports centre and café making the harbour a hive of activity.

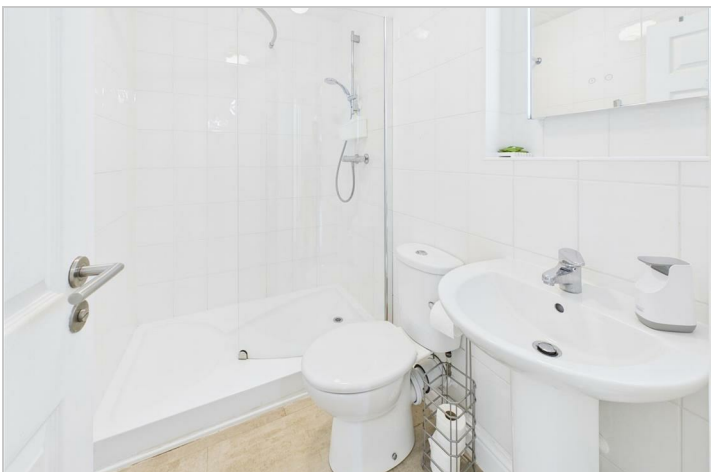
North Devon has a wealth of simply stunning golden sand beaches and has long been a mecca for British surfers. The area has recently been declared a 'world surfing reserve', one of just 12 places on the planet along with Australia's Golden Coast and Malibu in California.

## Directions

From our office, head north-east on the high street/A361 towards Oxford Grove. Follow the road onto Portland Street and in approximately 0.2 miles, turn right onto Hillsborough Terrace where an agent will meet you outside.

## Agent Notes

- 999 year leasehold which started in 2010
- Annual service charge of £1620.00 (£135.00pcm)
- No pets allowed
- Grade II Listed

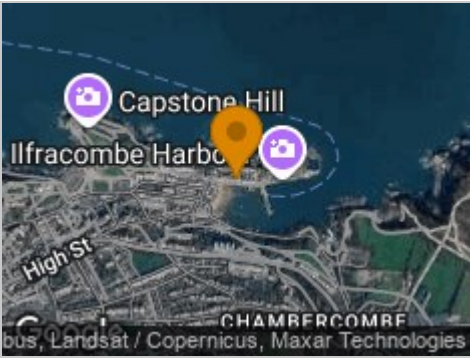




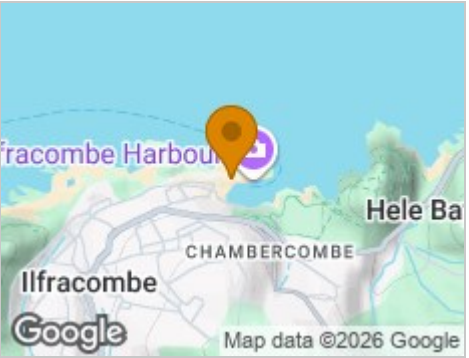
Road Map



Hybrid Map



Terrain Map



Floor Plan



Viewing

Please contact our Turners Property Centre Office on 01271 866421 if you wish to arrange a viewing appointment for this property or require further information.

These particulars, whilst believed to be accurate are set out as a general outline only for guidance and do not constitute any part of an offer or contract. Intending purchasers should not rely on them as statements of representation of fact, but must satisfy themselves by inspection or otherwise as to their accuracy. No person in this firms employment has the authority to make or give any representation or warranty in respect of the property.

135 High Street, Ilfracombe, Devon, EX34 9EZ  
Tel: 01271 866421  
Email: [sales@turnerspropertycentre.co.uk](mailto:sales@turnerspropertycentre.co.uk)  
<https://www.turnerspropertycentre.co.uk>

Energy Efficiency Graph

