



**Guide Price**  
**£300,000**

**Freehold**

3x  1x  1x 

**Magdalen Gardens,  
Maidstone, Kent ME15**

**OVER 60?**

Secure this property  
for up to **59% less!**

*Wards*  
Helping you move forwards





## Main features

- Chain free house
- Allocated parking for 2 cars
- Kitchen/breakfast room and large lounge
- Easy maintenance rear garden
- Short distance to local schools, supermarkets and Maidstone town centre

## Accommodation

### GROUND FLOOR

Hallway  
Cloakroom  
Kitchen/Breakfast Room: 13'6 x 8'2 (4.12m x 2.49m)  
Lounge: 15'2 x 11'3 (4.63m x 3.43m)

### FIRST FLOOR

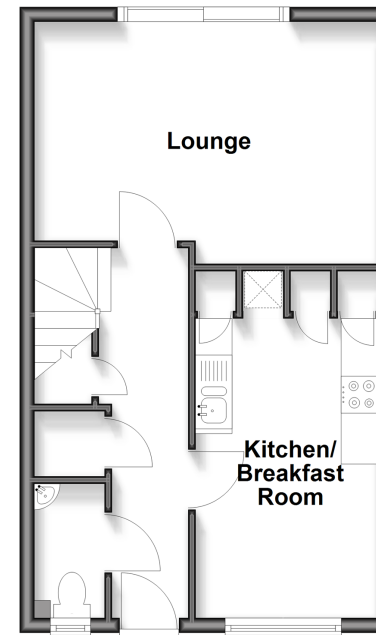
Landing  
Bedroom 1: 10'6 x 8'5 (3.20m x 2.57m)  
En-Suite Shower Room  
Bedroom 2: 9'6 x 8'5 (2.90m x 2.57m)  
Bedroom 3: 8'0 x 6'5 (2.44m x 1.96m)  
Bathroom

### OUTSIDE

Rear Garden  
Allocated Parking Space

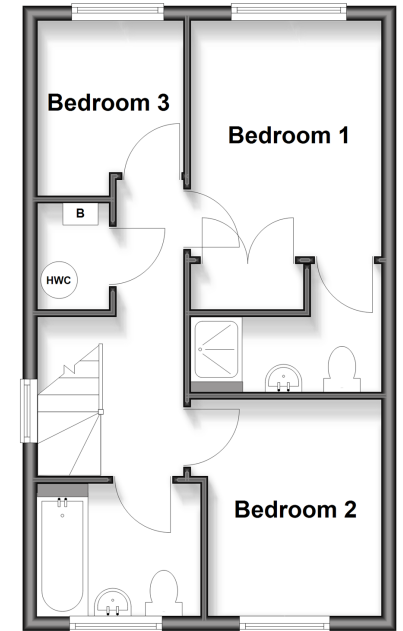
### Ground Floor

Approx. 37.9 sq. metres (408.3 sq. feet)



### First Floor

Approx. 37.9 sq. metres (408.3 sq. feet)



**Call Maidstone - 01622 683737 ■ [wardsofkent.co.uk](http://wardsofkent.co.uk)**

■ Legal advice should be taken to verify fixtures/fittings, planning, alterations and/or lease details  
■ Through a Homewise Home For Life Plan people aged 60+ can secure this property for up to 50% less, by purchasing a Lifetime Lease.

■ Appliances & services are untested, dimensions are approximate and floor plans are not to scale



13157421/20251112/SS1/TB