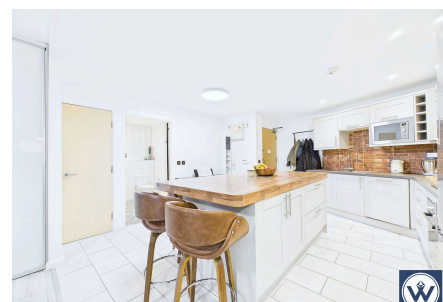


Radcliffe House , 401 Ashton Old Road, Manchester, M11 2DJ

Guide Price £140,000

🛏 1 🚿 1 🛋 1



A STUNNING and IMMACULATELY presented spacious ONE BEDROOM apartment minutes from Manchester Piccadilly Station and Northern Quarter. An ideal FIRST TIME BUY or INVESTMENT.

Key Features

- Ground Floor
- No Chain
- Stunning Kitchen
- Ideal First Time Buy
- Immaculate Throughout
- Spacious Living Area
- Secure Parking
- Minutes To City Centre

