



**38, Wingfield Close, Shrewsbury, SY1 4BL**  
£800 Per Month



38, Wingfield Close, Shrewsbury, SY1 4BL

**£800 Per Month**

VIRTUAL TOUR AVAILABLE - Three bedroom semi-detached family house with front and rear gardens. The property is conveniently situated for access to a variety of local amenities and within walking distance to the Shrewsbury town centre.

Available: 18/09/2026

## Description

Comprising: Entrance hall, Kitchen/dining room with oven and electric hob, under counter space for washing machine and door to rear garden, living room, family bathroom with shower over bath. Stairs to landing, three double bedrooms. Front and rear gardens. Double Glazing. Gas Central Heating. Driveway parking. EPC D.



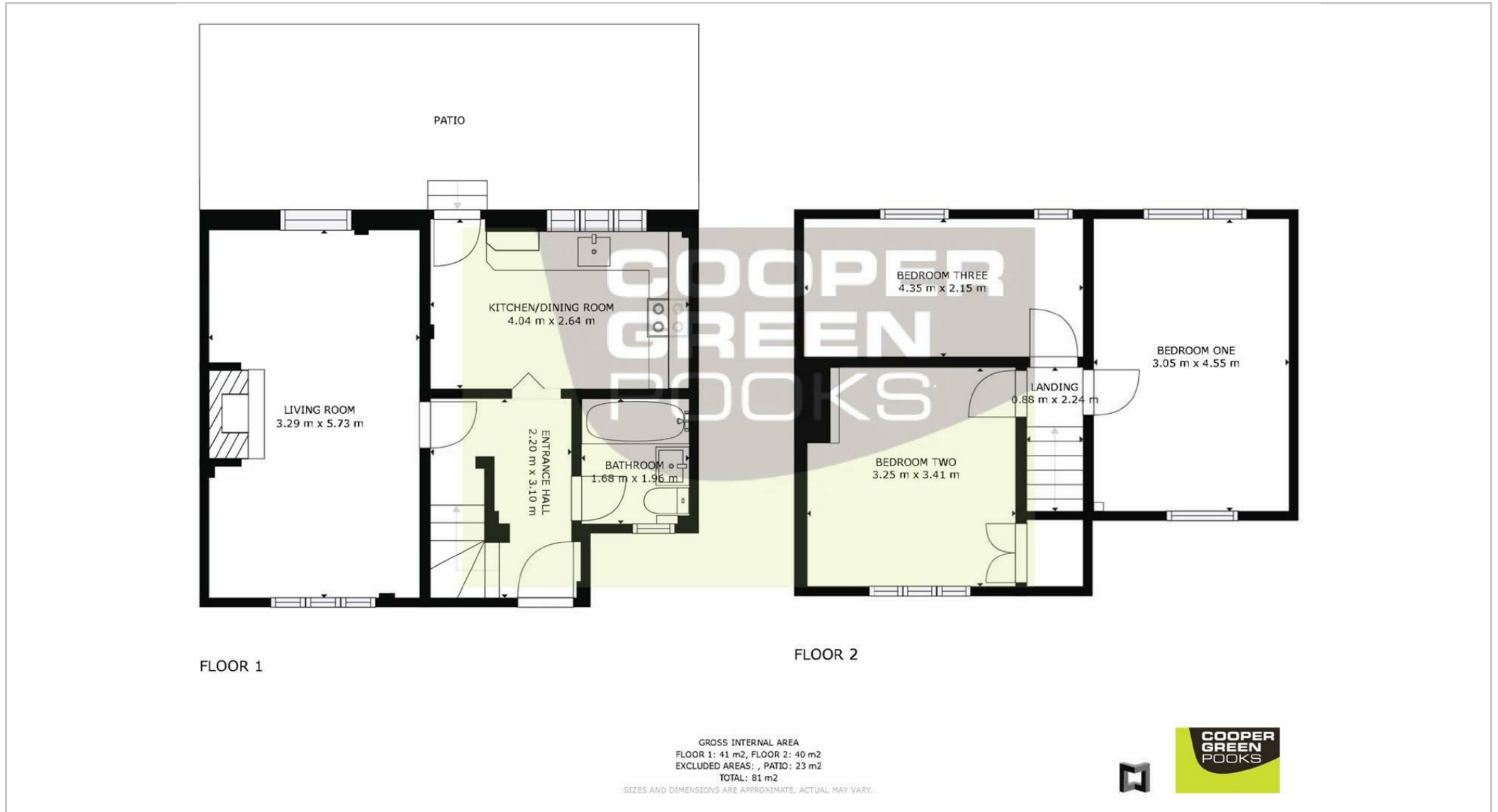
Unfurnished

Council Tax Band: B

Available: 18th September 2026

EPC: C

## Floor Plans



These particulars, whilst believed to be accurate are set out as a general outline only for guidance and do not constitute any part of an offer or contract. Intending purchasers should not rely on them as statements of representation of fact, but must satisfy themselves by inspection or otherwise as to their accuracy. No person in this firm's employment has the authority to make or give any representation or warranty in respect of the property.