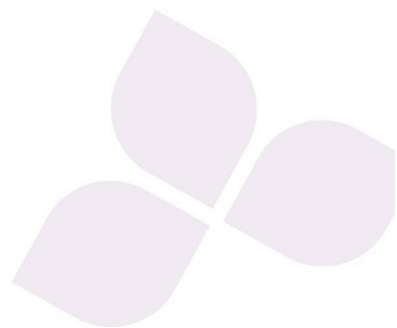


TO
LET

£1,450 PCM

Pennant House, Cross Street, Portsmou
PO1 3FT



HIGHLIGHTS

- ❖ TWO BEDROOMS
- ❖ OPEN PLANNED LIVING
- ❖ BALCONY
- ❖ PARKING SPACE
- ❖ EN SUITE TO MASTER BEDROOM
- ❖ BLOCK BUILT IN 2017
- ❖ MINUTES FROM GUNWHARF
- ❖ UNFURNISHED
- ❖ AVILABLE JULY



We are delighted to welcome to the rental market, this modern two bedroom apartment with off road parking a sought after location, in close proximity to Gunwharf Quays.

Benefitting from being finished to a very good standard, this apartment is offered unfurnished and is available to move into immediately.

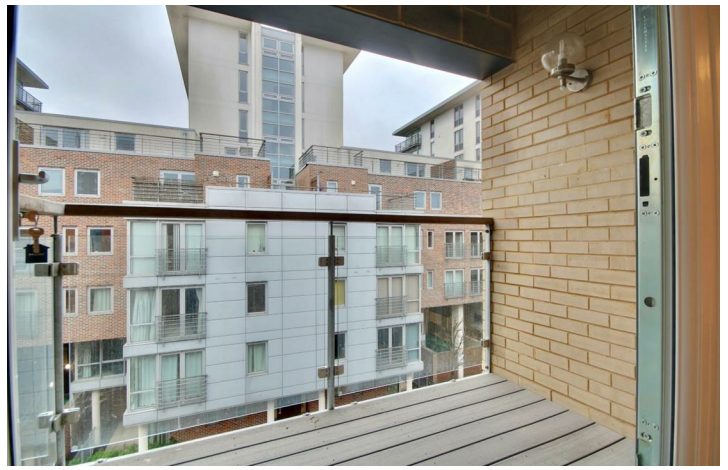
Internally, the property consists of a spacious open plan kitchen/lounge, and is the perfect entertaining space with access to the large balcony

The property has two spacious double bedrooms, all of which are flooded with natural light with the master bedroom having built in storage and an ensuite.

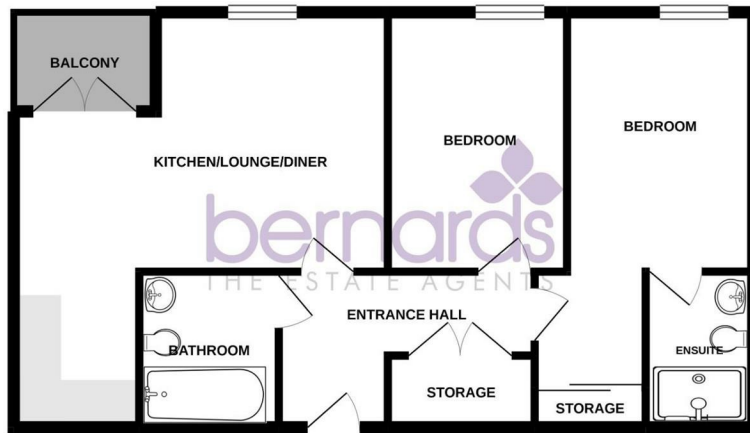
Completing the property is the fitted bathroom, which is finished to a wonderful standard.

With off road parking and excellent size throughout, we strongly recommend booking an early viewing to avoid disappointment

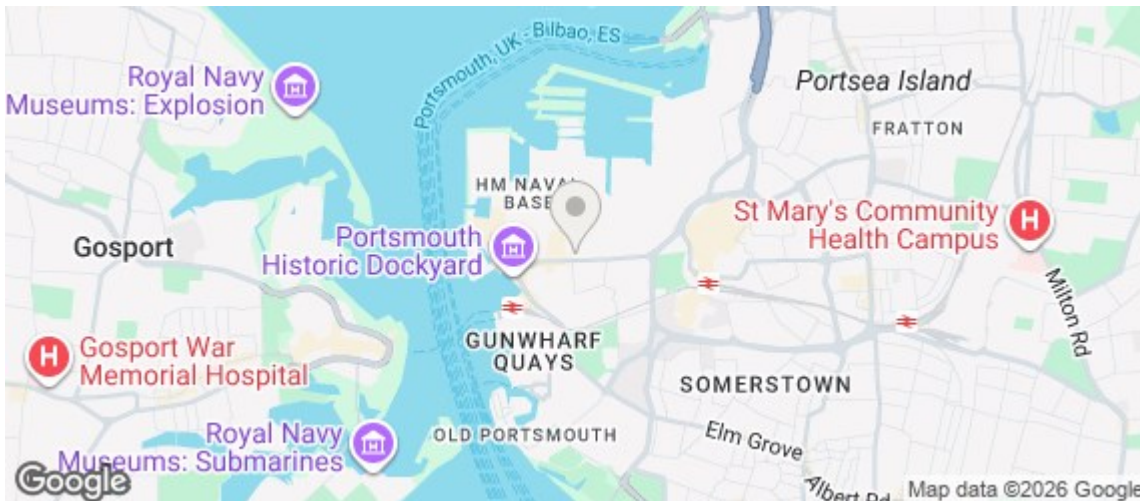




APARTMENT
670 sq.ft. (62.3 sq.m.) approx.



TOTAL FLOOR AREA: 670 sq.ft. (62.3 sq.m.) approx.
While every attempt has been made to ensure the accuracy of the floorplan contained herein, measurements of doors, windows, rooms and any other items are approximate and no responsibility is taken for any error, omission or mis-statement. This plan is for illustrative purposes only and should be used as such by any prospective purchaser. The services, systems and appliances shown have not been tested and no guarantee as to their operability or efficiency can be given.
Made with Mergix ©2021



Energy Efficiency Rating		
	Current	Potential
Very energy efficient - lower running costs		
(92 plus) A		
(81-91) B	84	84
(69-80) C		
(55-68) D		
(39-54) E		
(21-38) F		
(1-20) G		
Not energy efficient - higher running costs		
England & Wales		EU Directive 2002/91/EC

