

RESIDE
MANCHESTER

Flat 71 One Vesta Street
New Islington, Manchester, M4 6LT

Asking Price £220,000



1



1



1



B

Flat 71 One Vesta Street

New Islington, Manchester, M4 6LT

This spacious one-bedroom apartment is located on the third floor of Manchester Life's One Vesta Street development, offering a bright and airy open-plan kitchen and living space. Positioned alongside the Ashton Canal, the development provides residents with a 24-hour concierge service, a communal terrace, a residents' lounge, and secure cycle storage.

Ideally set between New Islington and Ancoats, One Vesta Street is surrounded by a vibrant mix of independent bakeries, cafés, and restaurants. New Islington tram stop is just a short walk away, offering convenient connections to Manchester City Centre and the wider Greater Manchester area.

To arrange a viewing, please contact the sales team on 0161 837 2840.





The Tour

One Vesta Street is an exclusive waterfront development featuring 169 apartments and three townhouses, all set within a secure gated community alongside the Ashton Canal and New Islington Marina. Designed by internationally acclaimed architect Rafael Viñoly, the scheme provides a 24-hour concierge, a residents' club lounge, and beautifully landscaped communal spaces, all positioned in one of Manchester City Centre's most desirable areas.

Living/Kitchen Area:

The property offers a generous open-plan living and kitchen space, complete with 18mm engineered oak flooring and a contemporary Omega fitted kitchen. Integrated appliances include a Neff oven and hob, as well as a CDA fridge and freezer. The room is enhanced by wall-mounted electric heaters, LED downlighting, and a large picture window that allows for an abundance of natural light. Two sizeable storage cupboards are also available, one of which houses the washer/dryer.

Bedroom:

The bedroom is a well-sized double, fully carpeted for comfort, and benefits from walk-through wardrobes that lead into a private en-suite bathroom. Additional features include LED downlights and TV and satellite connections.

Bathroom:

Finished to a high standard, the bathroom is fully tiled and fitted with a modern three-piece suite incorporating Villeroy & Boch sanitaryware. It also includes a thermostatic shower over the bath, a large mirror with a vanity shelf, a heated chrome towel rail, and LED downlighting.

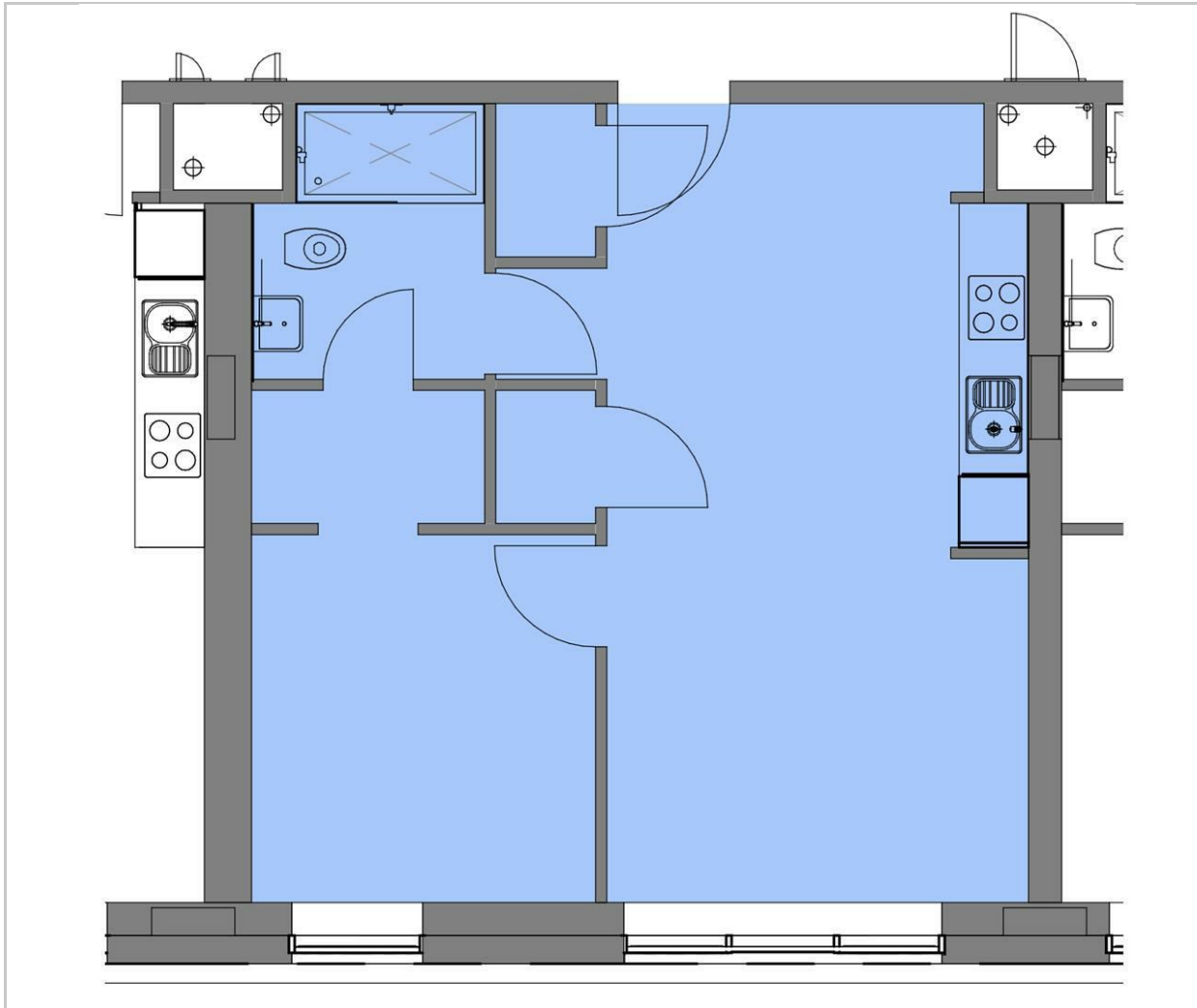
The Area

New Islington has evolved into one of Manchester's most vibrant and desirable neighbourhoods, following a 20-year regeneration that has helped earn it recognition as one of the UK's Best Places to Live by The Sunday Times. The area is known for its plentiful green and open spaces, offering a balance of outdoor living while remaining within easy walking distance of Manchester City Centre. Residents can enjoy an excellent range of bars, cafés, and restaurants right on their doorstep, including Cask, Pollen Bakery, and Flawd Wine Bar, with Cutting Room Square also just a short walk away. New Islington tram stop is conveniently located moments from the development, providing easy access across the city.

Lease Information

Length of lease - 250 years from January 2020.
Service charge - £1783 per annum.
Ground rent - Peppercorn.

Floor Plan

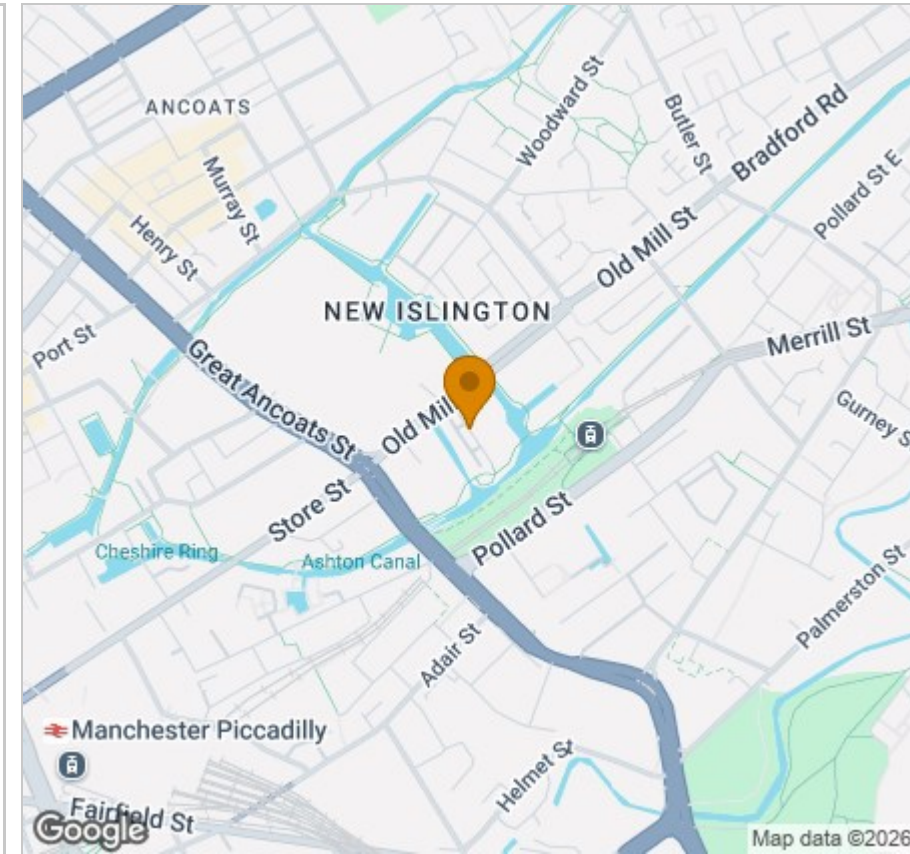


Viewing

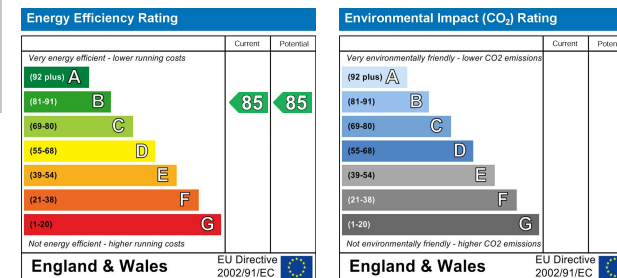
Please contact our Reside Manchester Office on 0161 837 2840 if you wish to arrange a viewing appointment for this property or require further information.

These particulars, whilst believed to be accurate are set out as a general outline only for guidance and do not constitute any part of an offer or contract. Intending purchasers should not rely on them as statements of representation of fact, but must satisfy themselves by inspection or otherwise as to their accuracy. No person in this firm's employment has the authority to make or give any representation or warranty in respect of the property.

Area Map



Energy Efficiency Graph



Upper Ground, 4 Jordan Street, Manchester, Greater Manchester, M15 4PY

Tel: 0161 837 2840 Email: info@residemanchester.com www.reside-property.com